

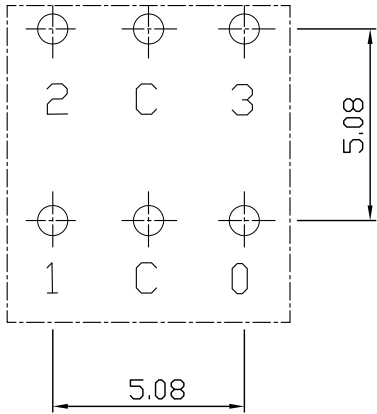
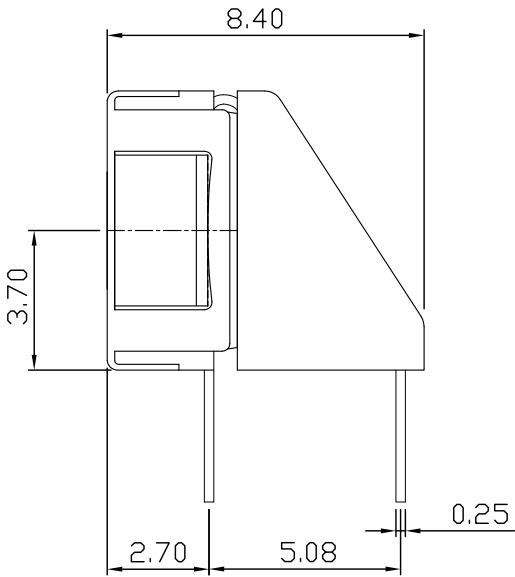
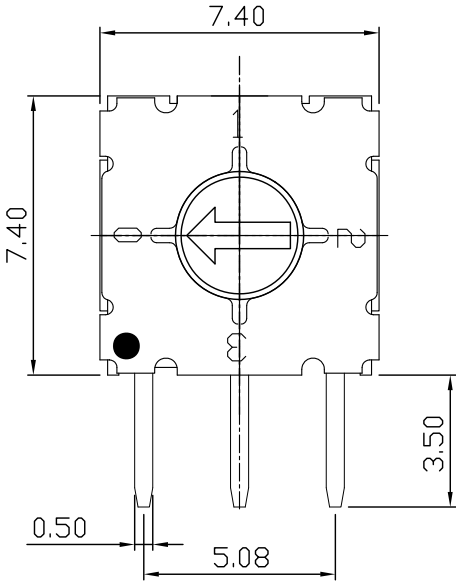
# - 规格书 -

产品型号： SKAL-04H

产品名称： 旋转编码开关

**SM SWITCH CO.,LTD**

MARK	DATE	REMARKS
△		
△		



P.C.B DIMENSION

" L " Code					
	C	0	1	2	3
0	●	●			
1	●		●		
2	●			●	
3	●				●

APPD	CHKD	D'SGD	TITLE. MINI ROTARY DIP SWITCH				
Y.D WANG	J.S KIM	H.S LEE	MODEL NO.	SKAL-04H		REV	7
			SM SWITCH CO., LTD.				

# ROTARY DIP SWITCH SPECIFICATION

Rev. A  
P:1/4

## 1. Style:

This specification describes "Rotary Switch" mainly used as signal switch of electric devices with the general requirements of mechanical and electrical characteristics.

1.1 Operating / Storage Temperature Range : -40℃ ~ +85℃

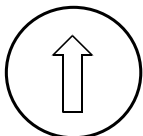
## 2. Current Range:

2.1 None-Switching : 200mA, 42V

2.2 Switching : 150mA, 42V

## 3. Type of Actuation : Rotating

## 4. Test Sequence :

E L E C T R I C  P E R F O R M A N C E	ITEM	DESCRIPTION	TEST CONDITIONS	REQUIREMENTS
	1	Visual Examination	By visual examination check without any out pressure & testing.	There shall be no defects that affect the serviceability of the product
	2	Contact Resistance	① To be measured between the two terminals associated with each switch pole ② Measurements shall be made with a 1kHz shall current contact resistance meter	80mΩ max
	3	Insulation Resistance	250V DC, 1minute ±5seconds	100MΩ min
	4	Dielectric withstanding Voltage	250V AC(50Hz or 60Hz)shall be applied between all the adjacent terminal and between the terminal and the frame For 1 minute	There shall be no breakdown or flash over
	5	Operation Force	Applied in the direction of operation 	700gf/cm. max

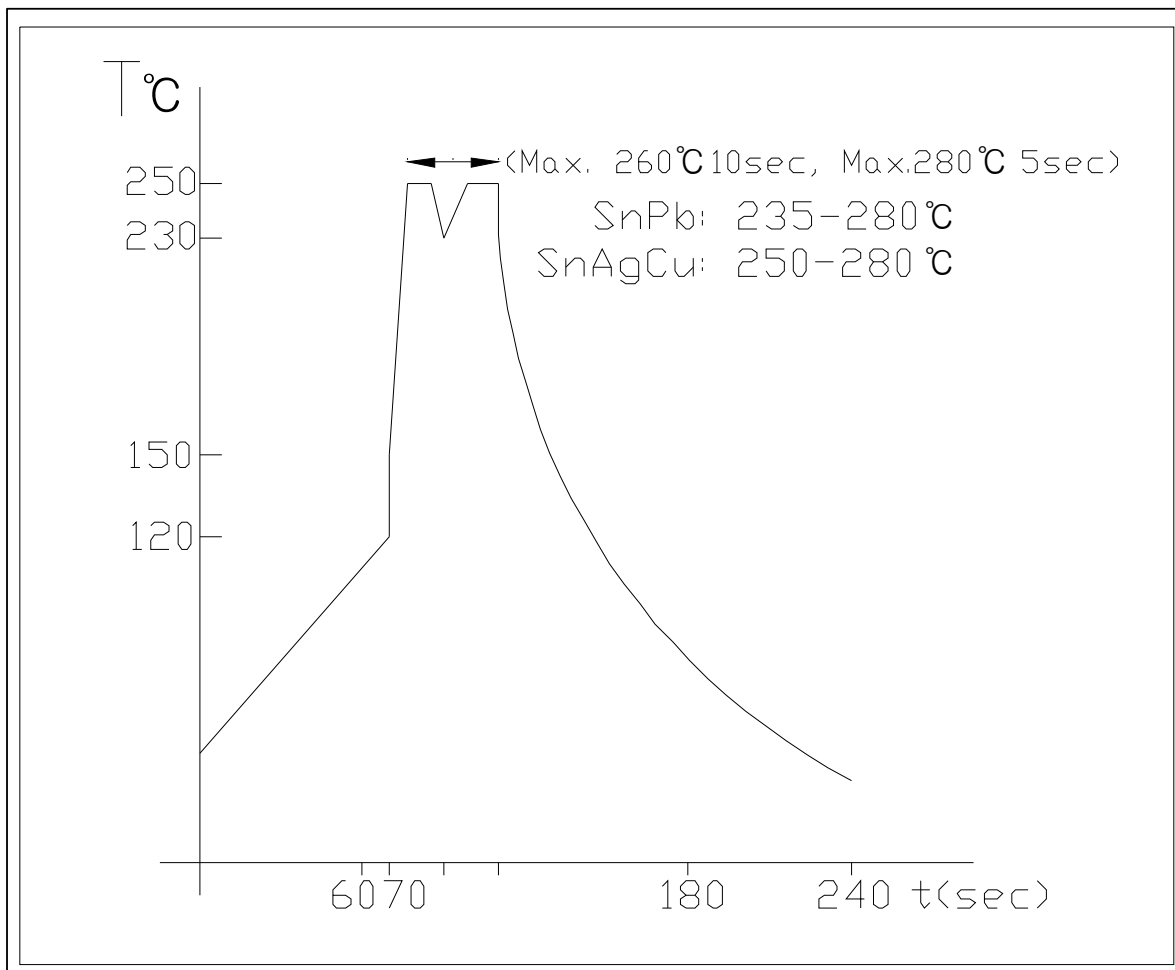


# ROTARY DIP SWITCH SPECIFICATION

Rev. A  
P: 2/4

M A C H I N  P E R F O R M A N C E	6	Operation Life	Measurements shall be made following the test set forth below: 1)150mA, 42V DC resistive load 2)Rate of operation: 15~20 cycles/ minute 3)Step of operation: 10,000 steps	1)As shown in item 3,4 2)Contact Resistance: 200mΩ max 3)Final-after test
	7	Resistance Low Temperature	Following the test set forth below the sample shall be left in normal temperature and humidity conditions for an hour before measurements are made: 1)Temperature: -40℃ ±3℃ 2)Time: 96 hours	As shown in item 2~5
	8	Resistance High Temperature	Following the test set forth below the sample shall be left in normal temperature and humidity conditions for an hour before measurements are made: 1)Temperature: 85℃ ±2℃ 2)Time: 96 hours	1)As shown in item 3~5 2)Contact Resistance: 200mΩ max
	9	Resistance Humidity	Following the test set forth below the sample shall be left in normal temperature and humidity conditions for an hour before measurements are made: 1)Temperature: 40℃ ±2℃ 2)Relative humidity: 90~95% 3)Time: 96 hours	1)As shown in item 4 2)Contact Resistance: 200mΩ max 3)Insulation Resistance: 10MΩ min

## 5. Wave Soldering Conditions:



## 6. manual Soldering

: Max. 350°C Max. 3sec

## 7. This item is "ROHS" Compliant

# ROTARY DIP SWITCH SPECIFICATION

Rev. A  
P: 4/4

## 8. Part List

NO	PART NAME	Q'TY	MATERIALS	TREATMENT	REMARK
1	COVER	1	PA66		Print:Black
2	BASE	1			
3	ACTUATOR	1	POM		
4	CONTACT & TERMINAL	1	PHOSPHOR BRONZE	CONTACT AND TERMINAL PLATING: GOLD PLATING OVER NICKEL	Au0.03 $\mu$ m Min Ni0.1 $\mu$ m Min
5	PCB	1	EPOXY	PLATING: GOLD PLATING	Au0.05 $\mu$ m Min
6	O-Ring	1	SILICONE		