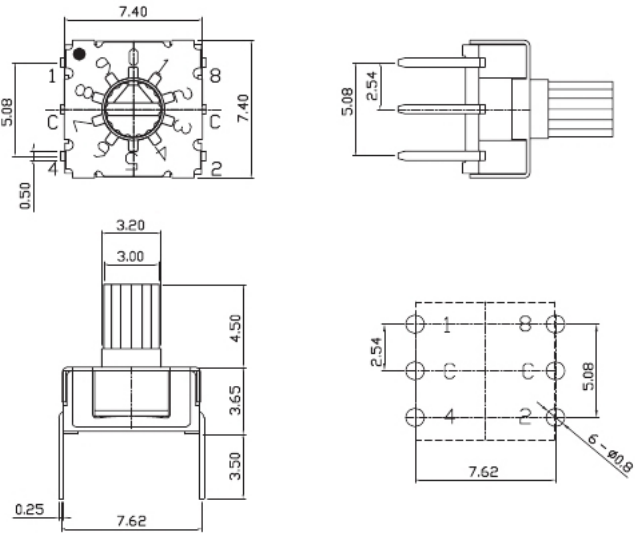


SKCR-10



How to Order 选型表

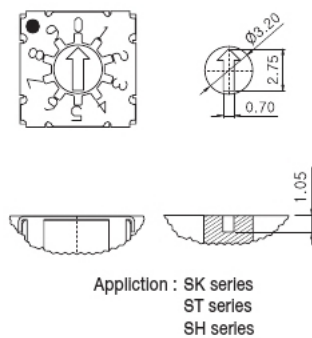
Type	Actuators	Code	Position	Terminals	Packing
SK ST SH	1	2	3	4	5
ex) SK	A	R	10	C	-

General Specification 产品性能

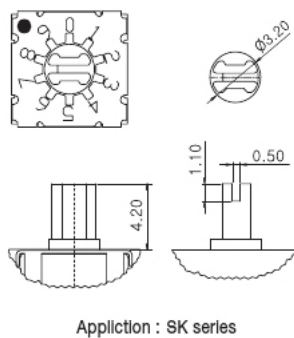
1. Rating 工作电流, 电压	Voltage 42V 100mA (Switching) 400mA (None-Switching)
2. Contact Resistance 接触电阻	80mΩ Max
3. Insulation Resistance 绝缘电阻	100MΩ Min
4. Operating Force 操作力	120gf ± 30gf
5. Life Cycle 使用寿命	25,000 steps
6. Solder Condition 焊接方式	Reflow Soldering : 10s/260 °C Iron Soldering : 4s/350 °C Wave Soldering : 5s/280 °C
7. Sealing 防水系数	IP67 (Dust & Water Proof)

1 Actuators 外观形式

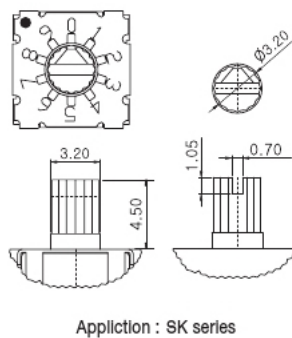
A



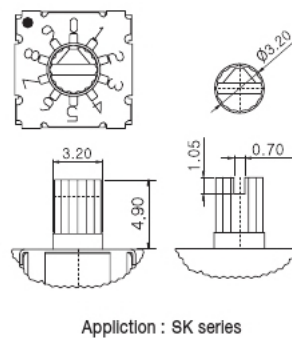
B



C



D



2 Code 编码表

R

Real Code

10 Position	Real Code				
	C	1	2	4	8
	0	*			
	1	*	*		
	2	*	*	*	
	3	*	*	*	*
	4	*	*	*	*
	5	*	*	*	*
	6	*	*	*	*
	7	*	*	*	*
	8	*	*	*	*
	9	*	*	*	*

Actuator Color
SK Type : Red
ST Type : Green
SH Type : Yellow

16 Position	Real Code				
	C	1	2	4	8
	0	*			
	1	*	*		
	2	*	*	*	
	3	*	*	*	*
	4	*	*	*	*
	5	*	*	*	*
	6	*	*	*	*
	7	*	*	*	*
	8	*	*	*	*
	9	*	*	*	*
	10	*	*	*	*
	11	*	*	*	*
	12	*	*	*	*
	13	*	*	*	*
	14	*	*	*	*
	15	*	*	*	*

Actuator Color
SK Type : Gray
ST Type : Indigo

C

Complement Code

10 Position	Complement Code				
	C	1	2	4	8
	0	*	*	*	*
	1	*	*	*	*
	2	*	*	*	*
	3	*	*	*	*
	4	*	*	*	*
	5	*	*	*	*
	6	*	*	*	*
	7	*	*	*	*
	8	*	*	*	*
	9	*	*	*	*

Actuator Color
SK Type : Orange
ST Type : Black

16 Position	Complement Code				
	C	1	2	4	8
	0	*	*	*	*
	1	*	*	*	*
	2	*	*	*	*
	3	*	*	*	*
	4	*	*	*	*
	5	*	*	*	*
	6	*	*	*	*
	7	*	*	*	*
	8	*	*	*	*
	9	*	*	*	*
	10	*	*	*	*
	11	*	*	*	*
	12	*	*	*	*
	13	*	*	*	*
	14	*	*	*	*
	15	*	*	*	*

Actuator Color
SK Type : Ivory

G

Gray Code

10 Position	Gray Code				
	C	1	2	4	8
	0	*			*
	1	*	*		*
	2	*	*	*	*
	3	*	*	*	*
	4	*	*	*	*
	5	*	*	*	*
	6	*	*	*	*
	7	*	*	*	*
	8	*	*	*	*
	9	*	*	*	*

Actuator Color
SK Type : Brown

16 Position	Gray Code				
	C	1	2	4	8
	0	*			*
	1	*	*		*
	2	*	*	*	*
	3	*	*	*	*
	4	*	*	*	*
	5	*	*	*	*
	6	*	*	*	*
	7	*	*	*	*
	8	*	*	*	*
	9	*	*	*	*
	10	*	*	*	*
	11	*	*	*	*
	12	*	*	*	*
	13	*	*	*	*
	14	*	*	*	*
	15	*	*	*	*

Actuator Color
SK Type : Blue

L

Code

4 Position	L Code			
	C	0	1	2
	0	*	*	*
	1	*	*	*
	2	*	*	*
	3	*	*	*

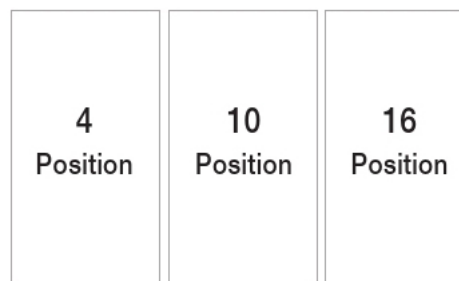
M

Code

4 Position	M Code			
	C	1	2	3
	0	*	*	*
	1	*	*	*
	2	*	*	*
	3	*	*	*

3

Position 位数形式

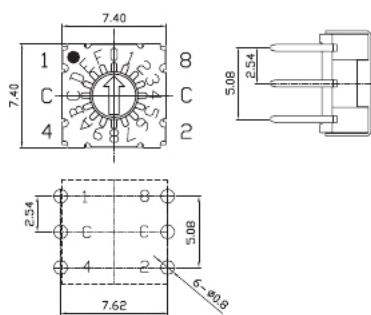


4

Terminals PIN角形式

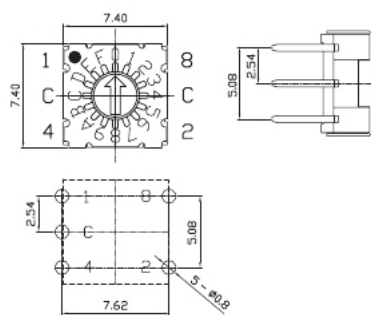
-

Standard Type



C

(3×2 Ter')



5

Packing 包装形式

-

Tube Packing Q'ty : 70pcs / Tube

