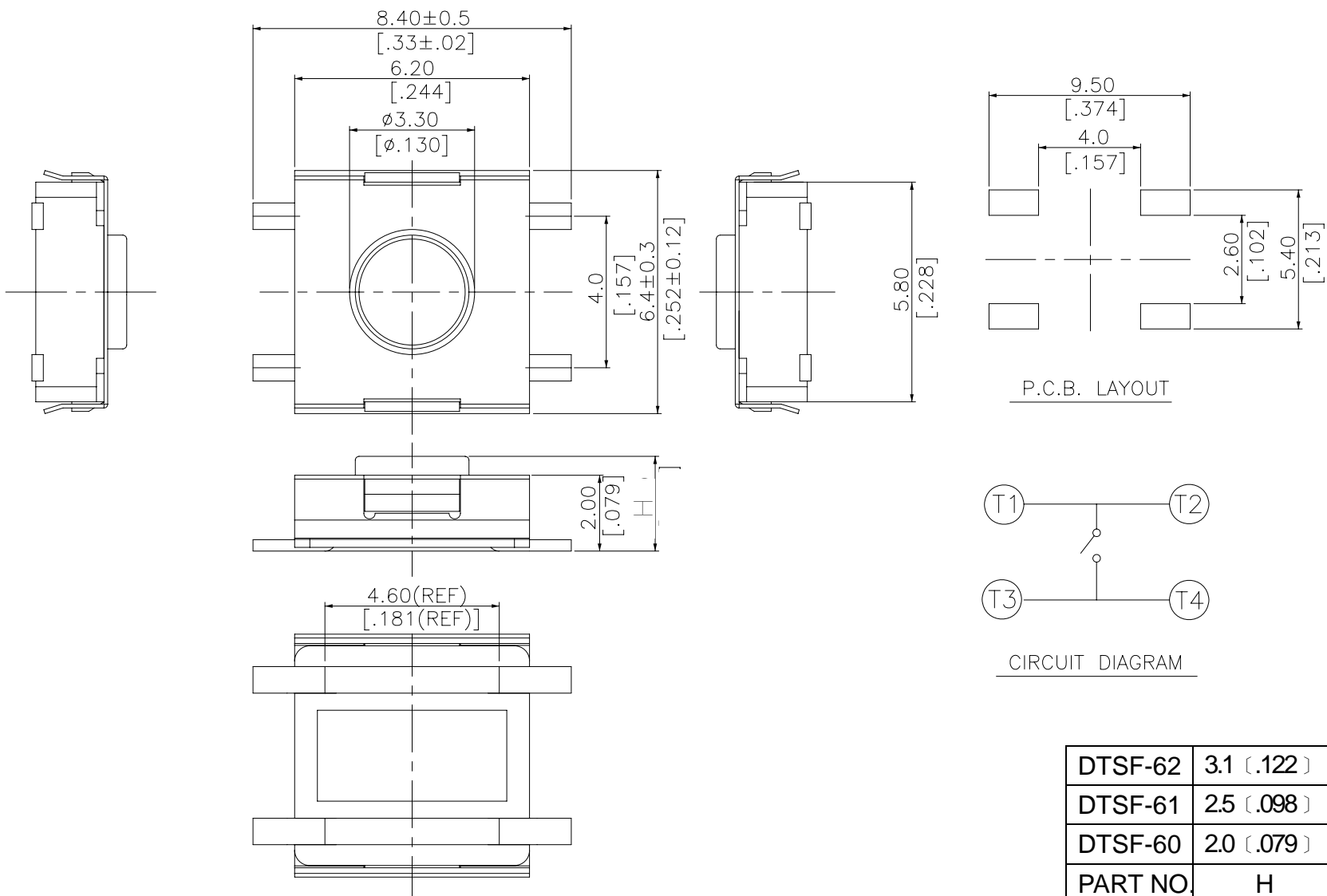


DTS(G)L-6,DTS(G)F-6 SERIES

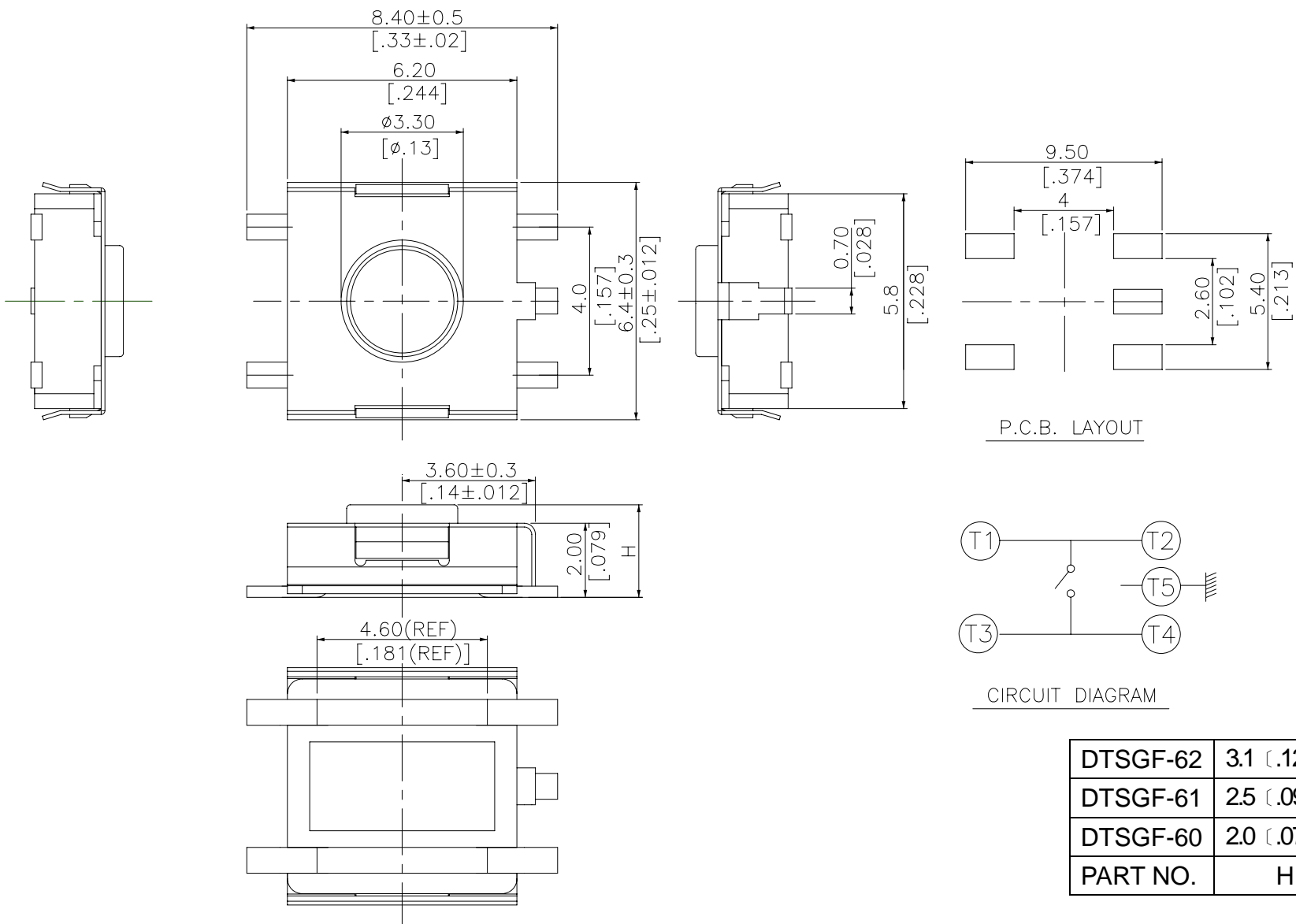


DIMENSIONS

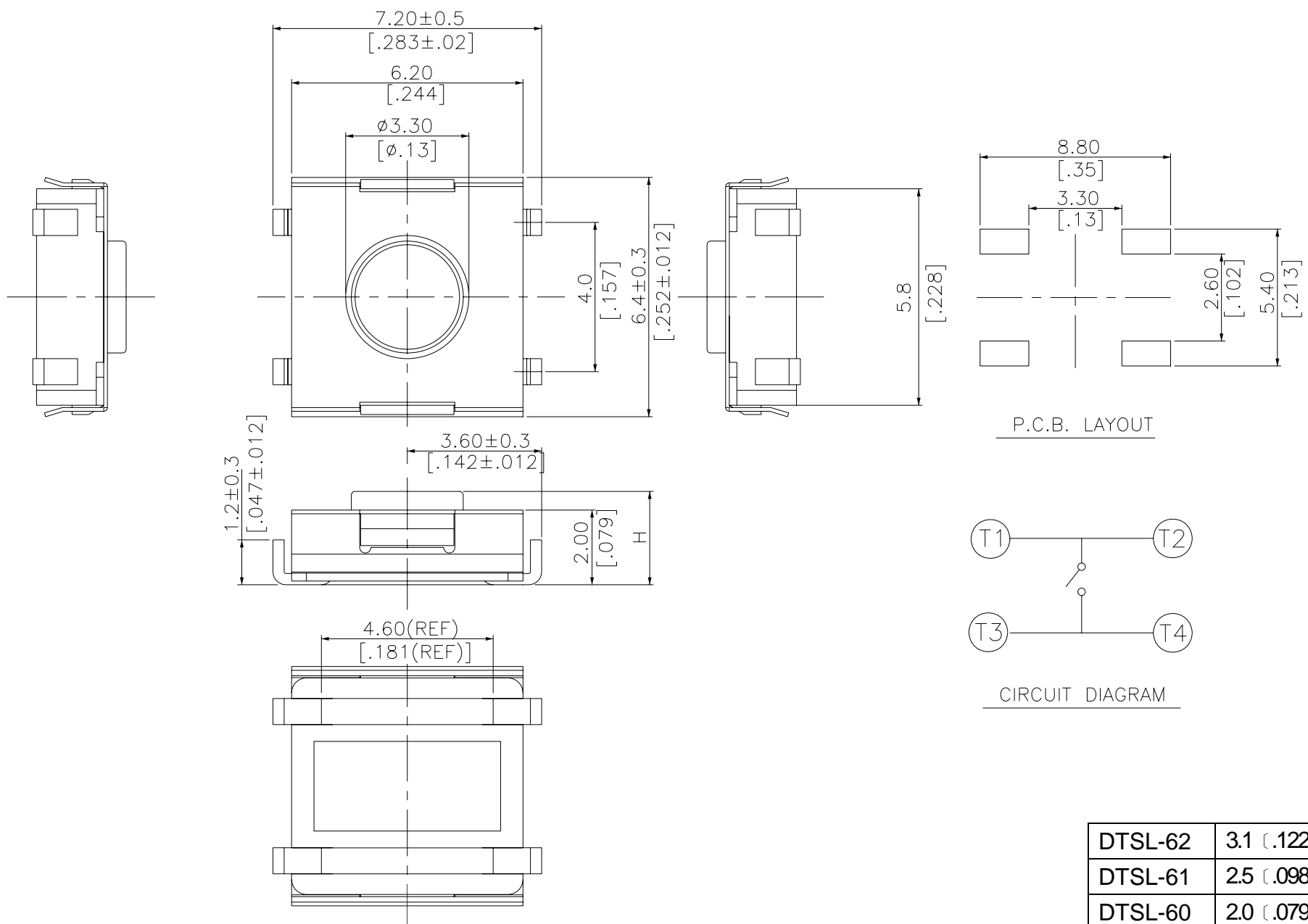
DTSF-6



DTSGF-6

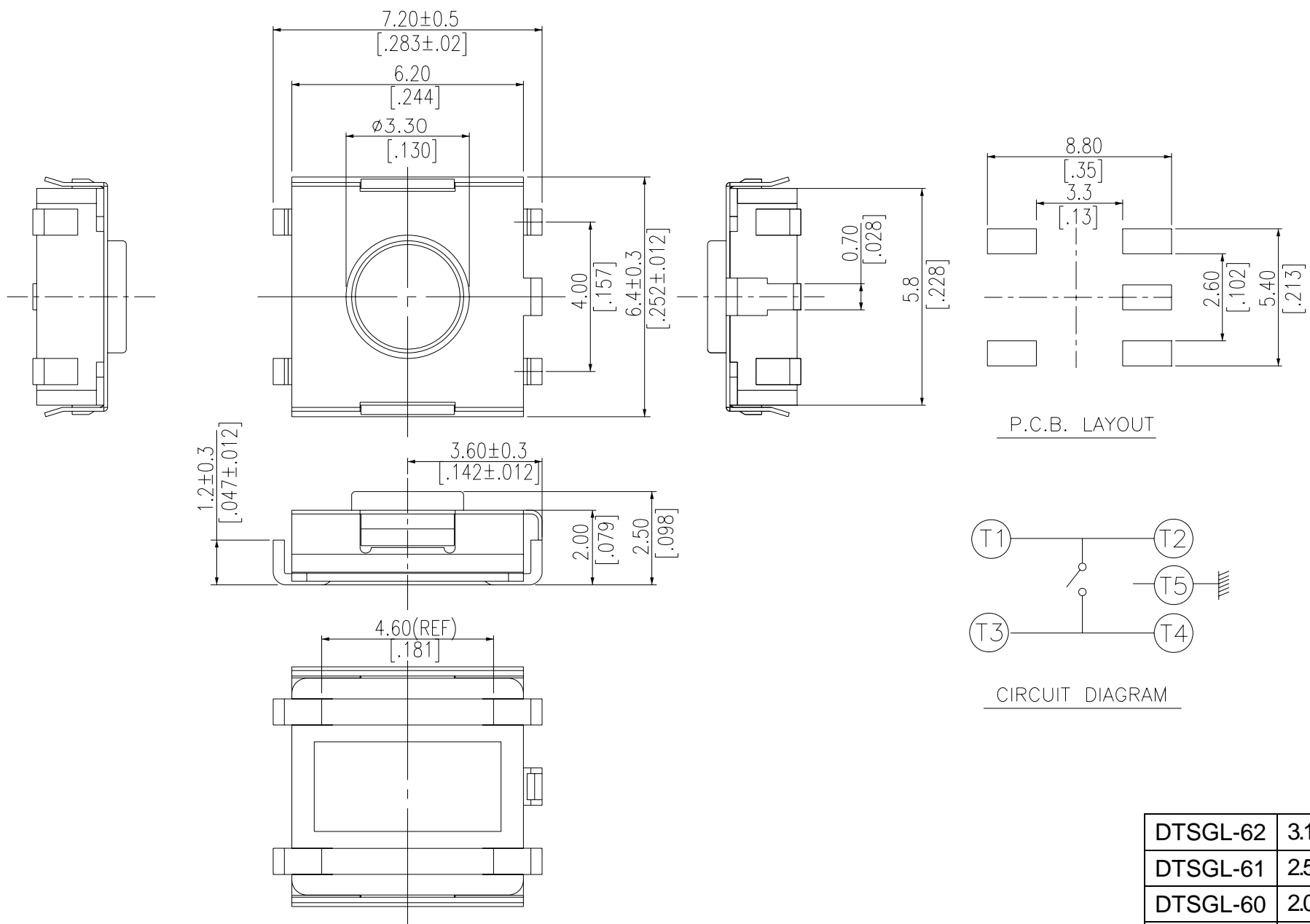


DTSL-6



General Tolerance : $\pm 0.2\text{mm}$

DTSG L-6



General Tolerance : $\pm 0.2\text{mm}$

DTSL-62	3.1 (.122)
DTSL-61	2.5 (.098)
DTSL-60	2.0 (.079)
PART NO.	H

DTSG L-62	3.1 (.122)
DTSG L-61	2.5 (.098)
DTSG L-60	2.0 (.079)
PART NO.	H

HOW TO ORDER

DTS ☐ ☐ - 6 ☐ ☐ ☐ - ☐ - ☐

Package Style :

B = Tube

T/R = Tape & Reel

Soldering :

V = Lead Free Solderable

Stem Actuator :

☐ = Soft <Only H : 3.1mm>

P = Hard <Actuator 3.1mm>

Color Of Stem For Operating Force :

K = Black,100g

N = Brown,160g

R = Red,260g

S = White,320g

Y = Yelloe,52g

N = Brown,200g <Only Soft actuator>

Total Height :

0 = 2.0mm

1 = 2.5mm

2 = 3.1mm

Terminal Type :

L = J Bend

F = Flat

Prod. Series :

G = With Ground Terminal

☐ = Without Ground Terminal

SPECIFICATION

△MECHANICAL

Operation Force: 100±50gf Black(K)
 160±50gf Brown(N)
 260±50gf Red(R)
 320±80gf White(S)
 520±130gf Yellow(Y)

Stroke: 0.25+0.2/-0.1mm

Operation Temperature: -25℃ to +70℃

Storage Temperature: -30℃ to +80℃

△ELECTRICAL

Electrical Life: 300,000 cycles for 320gf,520gf
 500,000 cycles for 260gf
 1,000,000 cycles for 100gf,160gf,180gf

Rating : 50 mA , 12 VDC

Contact Resistance : 100mΩ max

Insulation Resistance : 100MΩ min , at 500 VDC

Dielectric Strength : 250 VAC / 1minute

Contact Arrangement : 1 pole 1 throw

MATERIAL

△COVER: Stainless steel (DTSL.F-6)
 Nickel Silver (DTSGL.F-6)

△BASE: UL 94V-0 Nylon High-temp thermoplastic
 Color: Black

△CONTACT DISC: Stainless steel

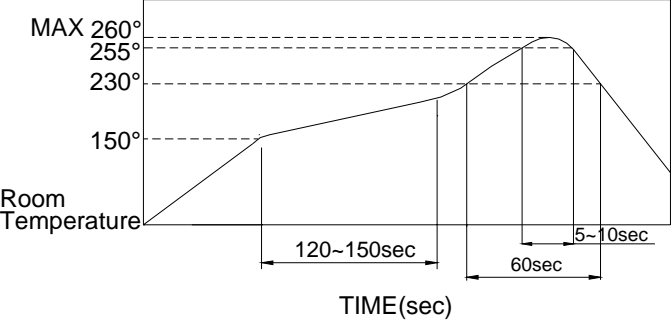
△TERMINAL: Brass with silver plated

△STEM : UL94V-0 Nylon High-temp Thermoplastic
 Color : Black(100gf) , Brown(160gf) , Red(260gf) ,
 White(320gf) , Yellow(520gf)
 Silicon Rubber Color : Brown (200gf)

SOLDERING CONDITIONS

△HAND SOLDERING : Use a soldering iron of 30 watts, Temperature Profile :
 controlled at 350℃ approximately max 5 seconds while
 applying solder.

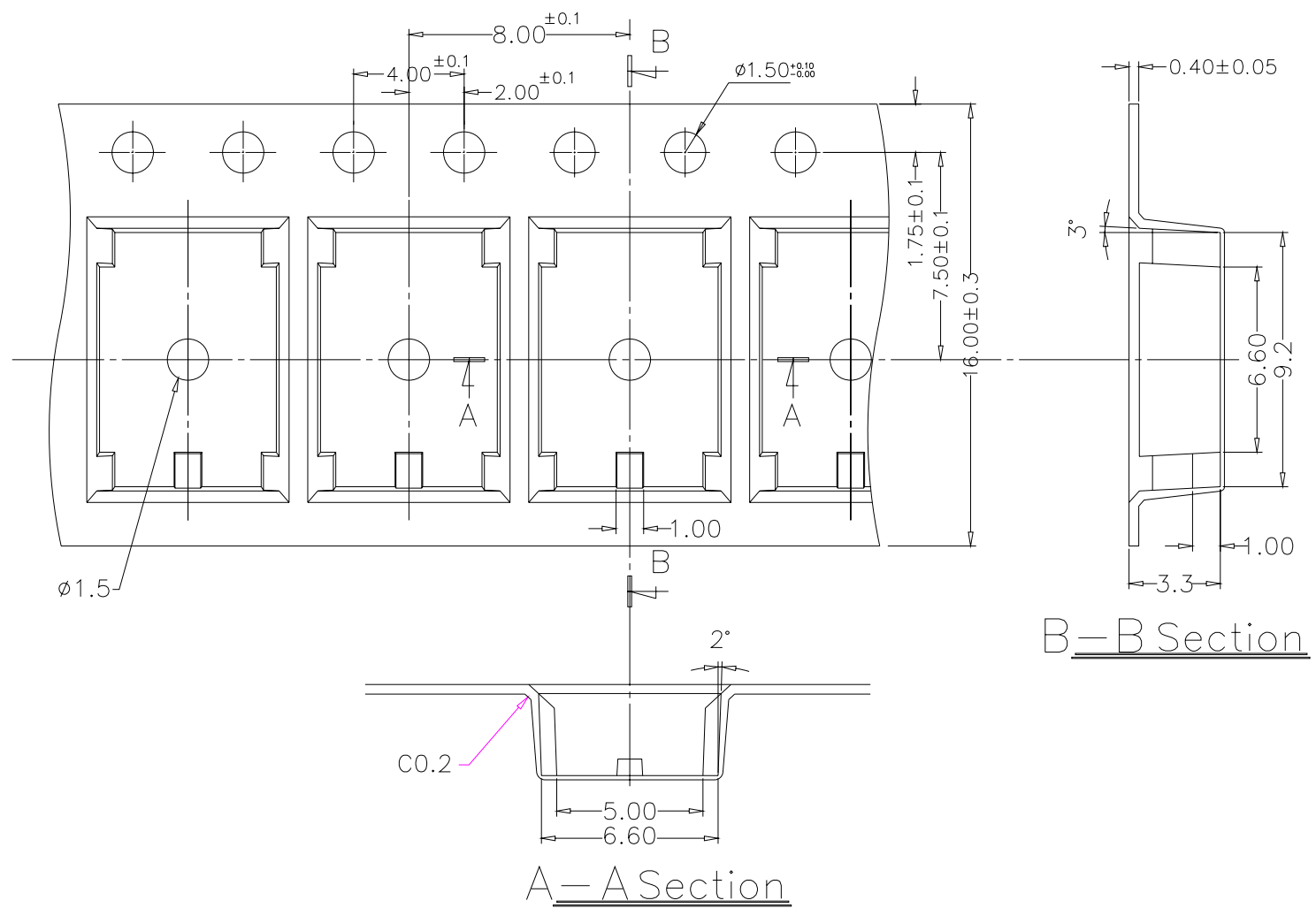
△REFLOW SOLDERING : When applying reflow
 Soldering , the peak temperature or the reflow oven
 should be set to 260℃ max. Condition for soldering.
 (Reflow & Non-washable type)



PACKING

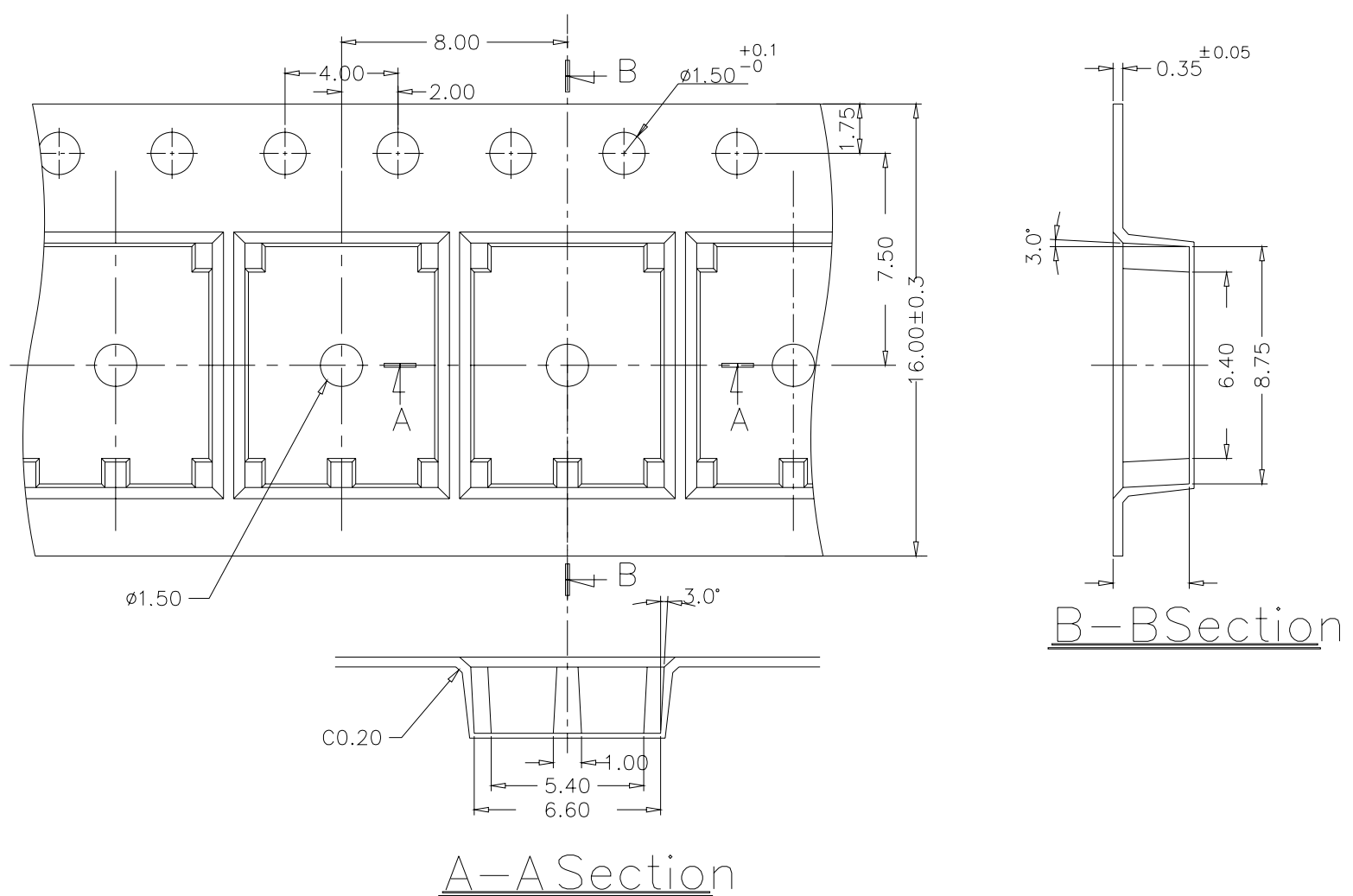
Part Number	Number Per Tube	Number Per Reel
DTS(G)L-60(1)	75	2700
DTS(G)F-60(1)	75	3000
DTS(G)L-62	75	2500
DTS(G)F-62	75	2500

DTS(G)L 、 F-62 REEL



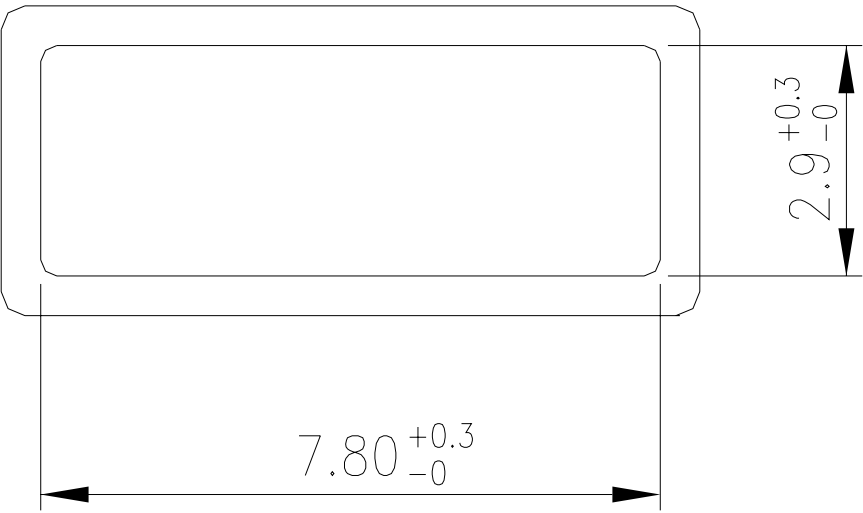
General Tolerance : $\pm 0.1\text{mm}$

DTS(G)L 、 F-60 、 61 REEL



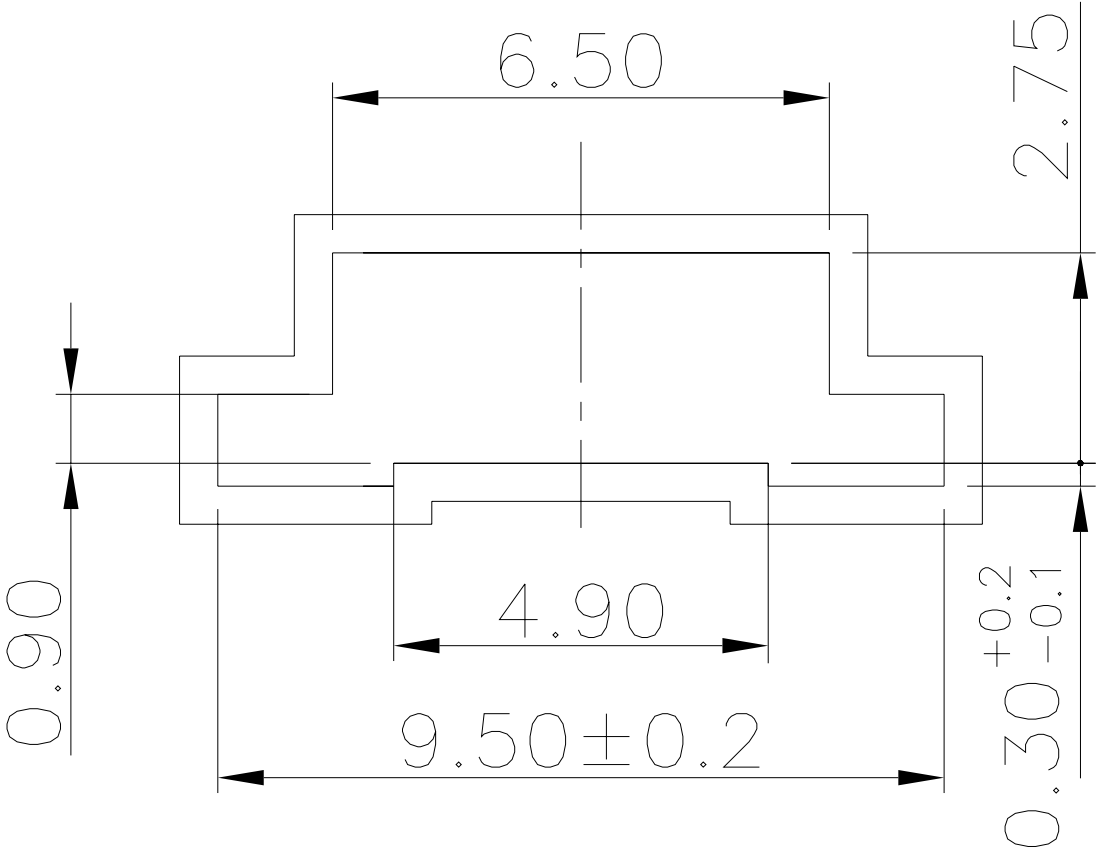
General Tolerance : $\pm 0.1\text{mm}$

DTS(G)L-6 TUBE



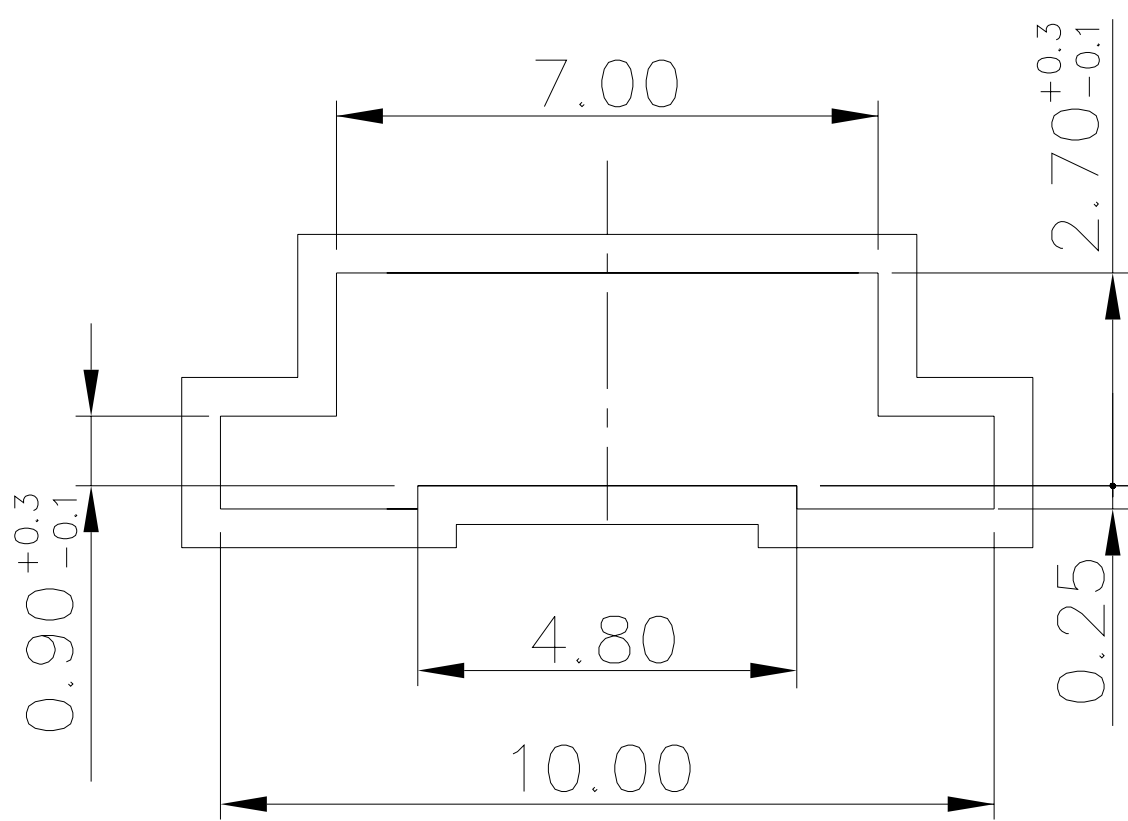
General Tolerance : ± 0.2 mm

DTSF-60 、 61 TUBE



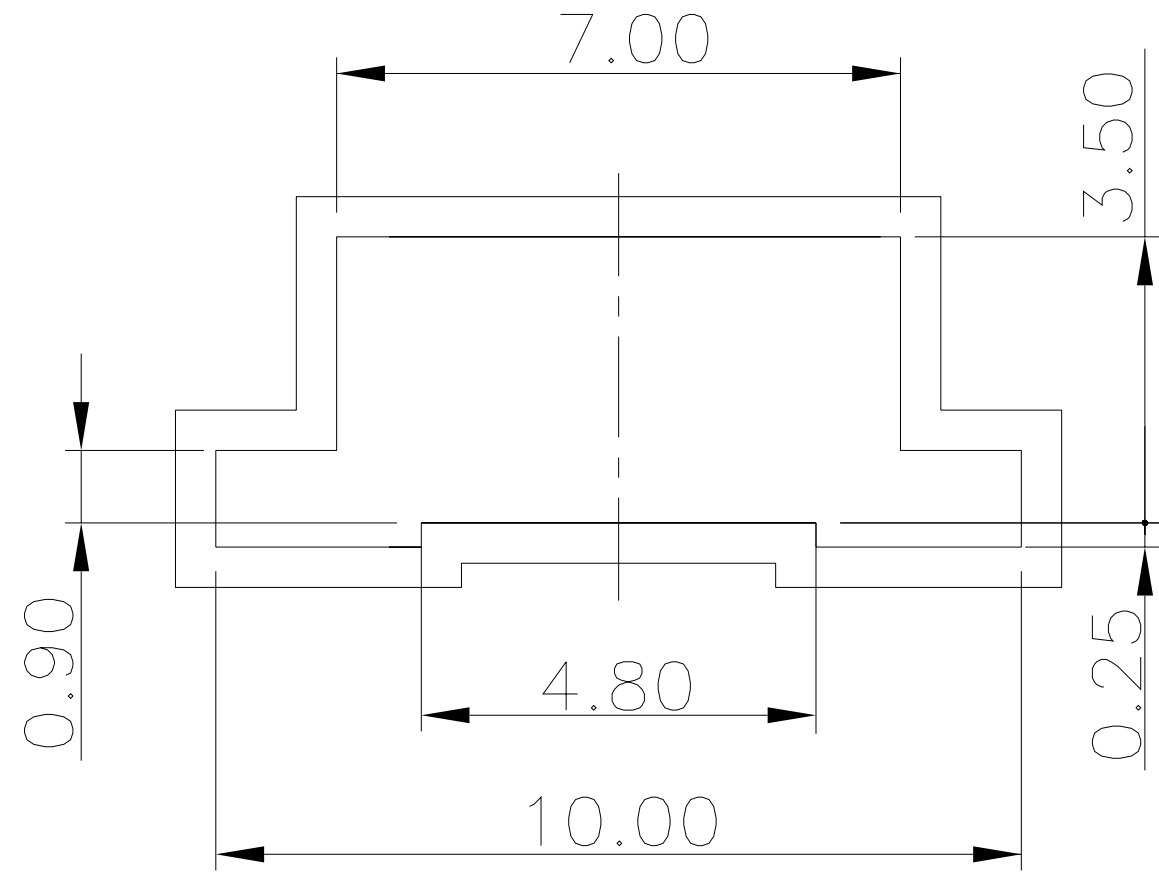
General Tolerance : ± 0.2 mm

DTSGF-60、61 TUBE



General Tolerance : ±0.2mm

DTS(G)F-62 TUBE



General Tolerance : ±0.2mm