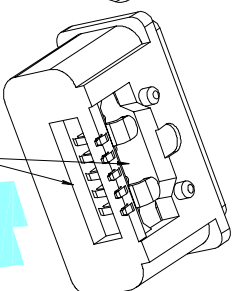
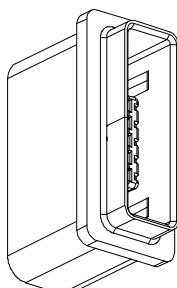
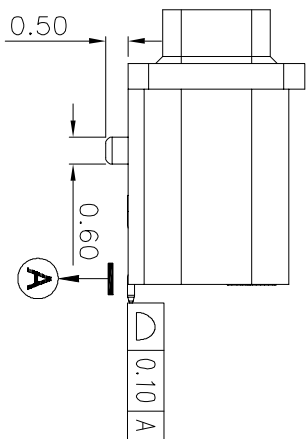
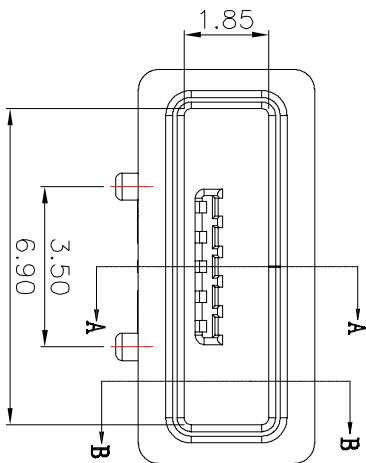
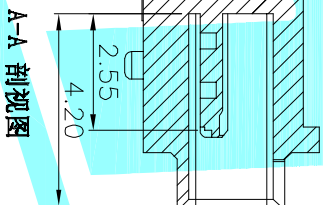
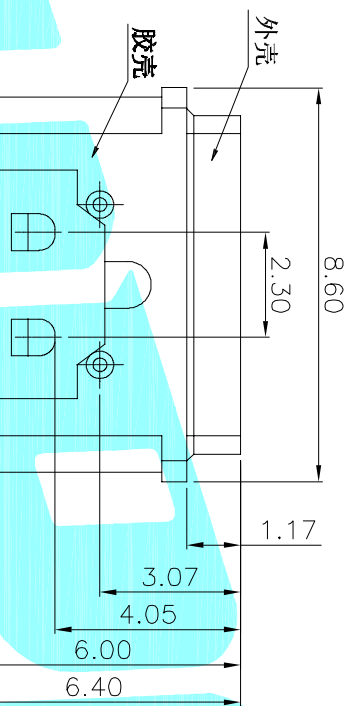


防水等级: IPX7



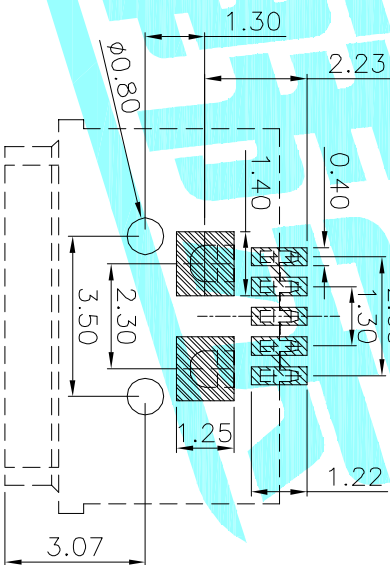
此处打胶防水

3D示意图

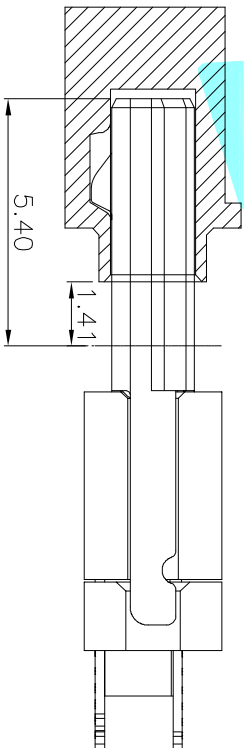


A-A 剖面图

Recommended PCB Layout



- Specifications
1. Rating : DC 30V 0.5A
  2. Dielectric withstanding:100V(AC) for 1min
  3. Contact Resistance : 50mΩMax
  4. Insulation Resistance: 100MΩ Min
  5. Operating Temperature Range: -25℃+80℃
  6. Operating Force : 8-30N
  7. Operating Life : 5,000Cycles



B-B 剖面图

配合示意图

③	Shell	—	1	SUS	Natural	—
②	Contact	—	5	Copper Alloy	Au Plated	—
①	Housing	—	1	LCP	Black	—
ITEM	PART NAME	TER'NO.	QTY.	MATERIAL	FINISHING	REMARK

APPROVALS		DATE	ELECTRONICS CO.,LTD			
DRAWN	JKUN.LU	2014/9/29	防水USB CONNECTOR			

CHECKED		TITLE:		PART NO.		
APPROVALS		SCALE: 1:1		PROJ: 1 OF 1		
TOLERANCES ARE		UNIT: mm		SHEET		
30~12.7 ±0.30		ANGLE				
10~30 ±0.25		DRAWING NO.				
5~10 ±0.20						
~5 ±0.15						
±2°						
ECN NO.		REV.		DATE.		
A						
NEW		DESCRIPTION.				
CHANGE.		CHECK.		APPRO.		