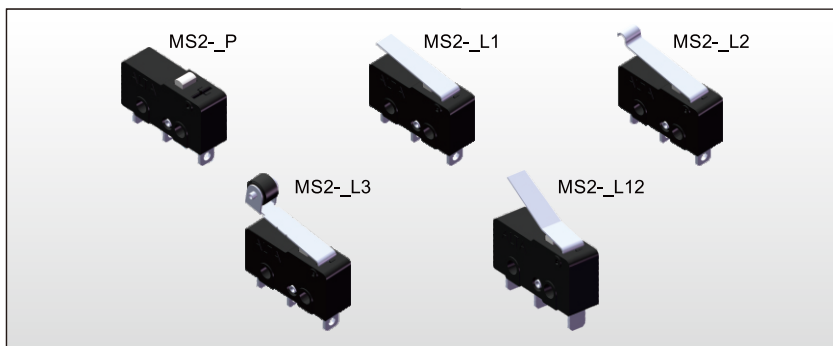


MICRO SWITCH MS2 SERIES



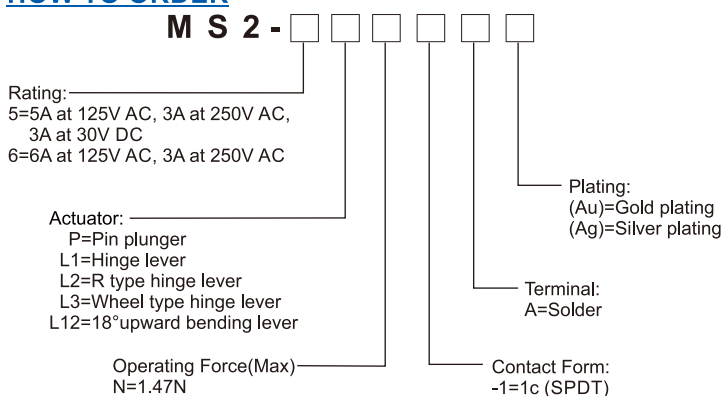
FEATURES

- ※Subminiature switch conforming to UL.
- ※Solder terminal.
- ※Highly reliable with long operation life.

APPLICATION

- ※Home appliances
- ※Vacuum cleaner
- ※Printers
- ※White goods

HOW TO ORDER



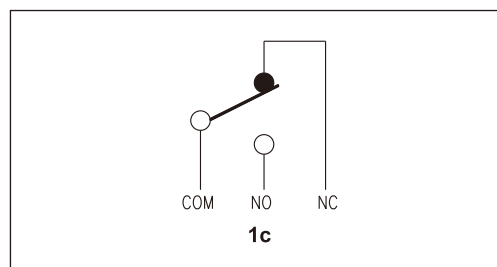
Note:

These of values are for the pin plunger models.

SPECIFICATION

Contact Rating	5A at 125V AC/3A at 250V AC 3A at 30V DC 6A at 125V AC/3A at 250V AC	MS2-5 MS2-6
Mechanical Durability	10,000,000 cycles min.	
Electrical Durability	10,000 cycles min.	MS2-5 MS2-6
Contact Resistance	50mΩ max. (initial value)	
Insulation Resistance	100MΩ min.	
Dielectric Strength	Between terminals of the same polarity "AC 1000V 1min" Between current-carrying metal parts and ground "AC 1500V 1min" Between each terminal and non-current-carrying metal part "AC 1500V 1min"	
Vibration Resistance	10~55Hz, 1.5mm double amplitude (for pin plunger)	
Shock Resistance	300m/s ² (for pin plunger)	
Operating Speed	0.1~1000mm/s (without load)	
Operating Frequency	300 operations/min (without load)	
Operating Temp.	-40°C ~ +105°C -25°C ~ +75°C	MS2-5 MS2-6

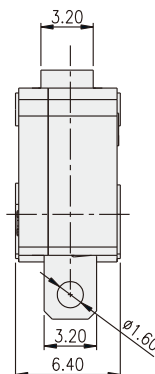
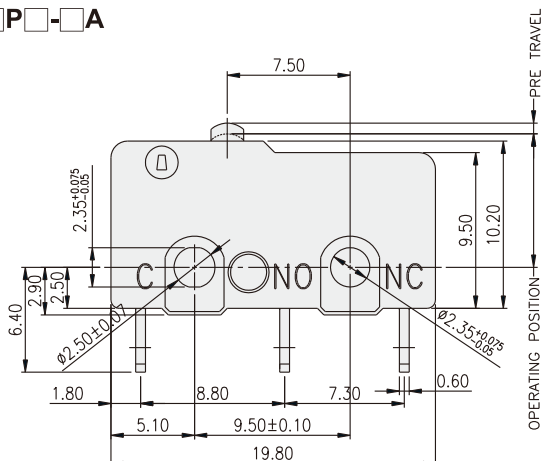
CIRCUIT



TYPE

Actuator	Terminal Type	Silver Alloy Contact	Silver Alloy Contact (Gold)	Silver Alloy Contact
Pin Plunger	Solder Terminal	MS2-5PN-1A(Ag)	MS2-5PN-1A(Au)	MS2-6PN-1A(Ag)
Hinge Lever		MS2-5L1N-1A(Ag)	MS2-5L1N-1A(Au)	MS2-6L1N-1A(Ag)
R Type Hinge Lever		MS2-5L2N-1A(Ag)	MS2-5L2N-1A(Au)	MS2-6L2N-1A(Ag)
Hinge Roller Lever		MS2-5L3N-1A(Ag)	MS2-5L3N-1A(Au)	MS2-6L3N-1A(Ag)
18° upward Bending Lever		MS2-5L12N-1A(Ag)	MS2-5L12N-1A(Au)	MS2-6L12N-1A(Ag)

MS2-□P□-□A



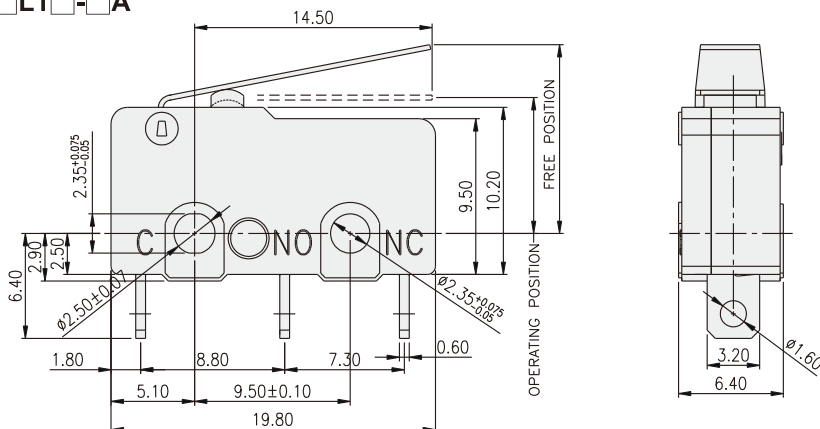
OPERATING CHARACTERISTICS

ITEM	SPEC.
OPERATING FORCE	1.47N MAX.
RELEASE FORCE	0.25N MIN.
OVERTRAVEL	0.50mm MIN.
MOVEMENT DIFFERENTIAL	0.10mm MAX.
OPERATING POSITION	8.40±0.50mm
PRE TRAVEL	0.50mm MAX.

MICRO SWITCH MS2 SERIES



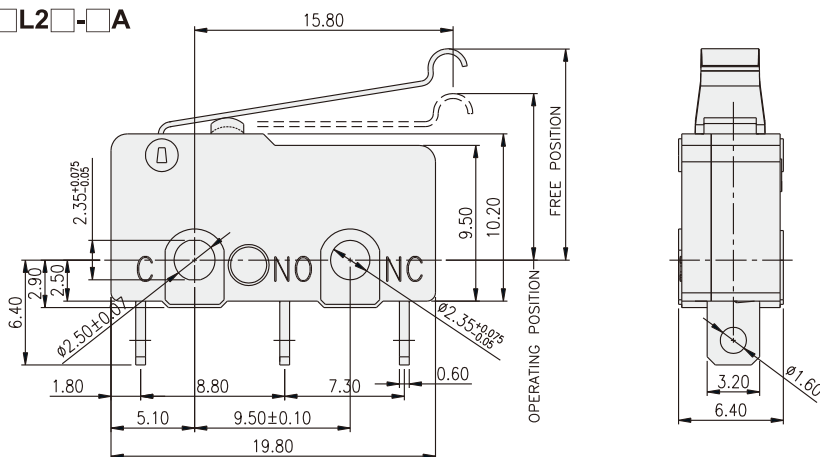
MS2-□L1□-□A



OPERATING CHARACTERISTICS

ITEM	SPEC.
OPERATING FORCE	0.49N MAX.
RELEASE FORCE	0.06N MIN.
OVERTRAVEL	1.20mm MIN.
MOVEMENT DIFFERENTIAL	0.80mm MAX.
OPERATING POSITION	8.80±0.80mm MS2-6 8.90±0.80mm
FREE POSITION	12.0mm MAX.

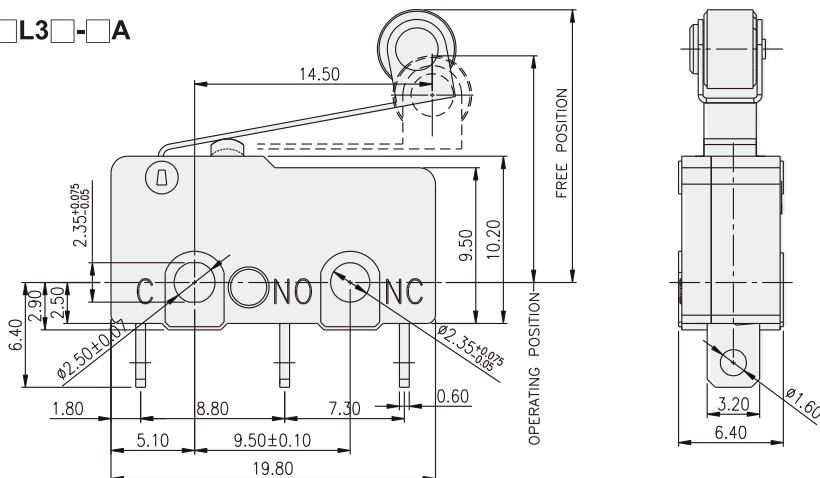
MS2-□L2□-□A



OPERATING CHARACTERISTICS

ITEM	SPEC.
OPERATING FORCE	0.49N MAX.
RELEASE FORCE	0.06N MIN.
OVERTRAVEL	1.20mm MIN.
MOVEMENT DIFFERENTIAL	0.80mm MAX.
OPERATING POSITION	10.70±0.80mm
FREE POSITION	15.50mm MAX.

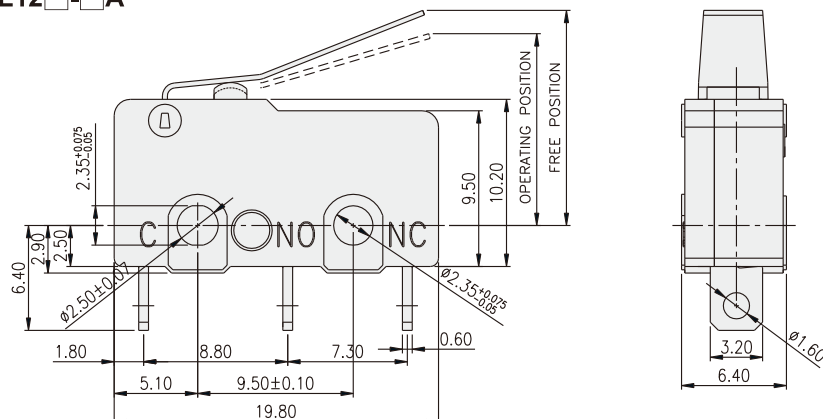
MS2-□L3□-□A



OPERATING CHARACTERISTICS

ITEM	SPEC.
OPERATING FORCE	0.49N MAX.
RELEASE FORCE	0.06N MIN.
OVERTRAVEL	1.20mm MIN.
MOVEMENT DIFFERENTIAL	0.80mm MAX.
OPERATING POSITION	14.50±0.80mm
FREE POSITION	19.30mm MAX.

MS2-□L12□-□A



OPERATING CHARACTERISTICS

ITEM	SPEC.
OPERATING FORCE	0.49N MAX. MS2-5 0.50N MIN.
RELEASE FORCE	0.06N MIN.
OVERTRAVEL	1.20mm MIN.
MOVEMENT DIFFERENTIAL	0.80mm MAX.
OPERATING POSITION	12±0.80mm
FREE POSITION	16mm MAX.