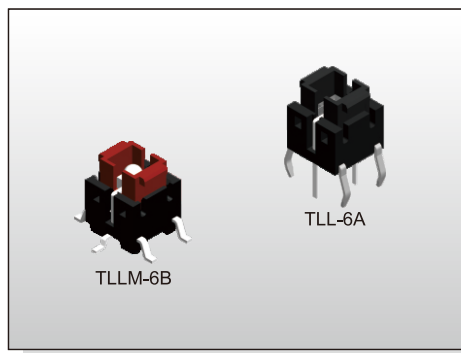


ILLUMINATED SWITCH

TL(L)(M)-6 SERIES

Tact Switch
Illuminated



FEATURES

- ※Super bright LED
- ※Various LED colors
- ※Options of different cap color

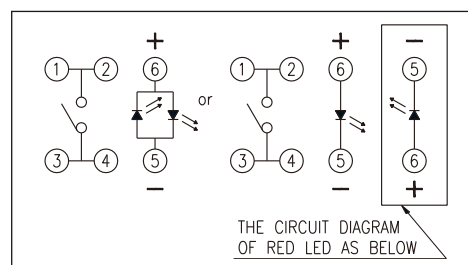
APPLICATION

- ※Server
- ※Laptop, IPC
- ※Set-top box

SPECIFICATION

Contact Rating	50mA, 12V DC	
Contact Resistance	100mΩ max.	
Insulation Resistance	100MΩ min. 500V DC	
Dielectric Strength	250V AC/1 minute	
Operating Force	100±50gf	TL(L)-61
	160±50gf	TL(L)-62
	260±50gf	TL(L)-63
	520±130gf	TL(L)-65
Travel	0.2mm	
Operating Life	200, 000 cycles for 520/260gf 500, 000 cycles for 160/100gf	
Operating Temp.	-25°C ~ +70°C	
Storage Temp.	-30°C ~ +80°C	

CIRCUIT



PACKAGE

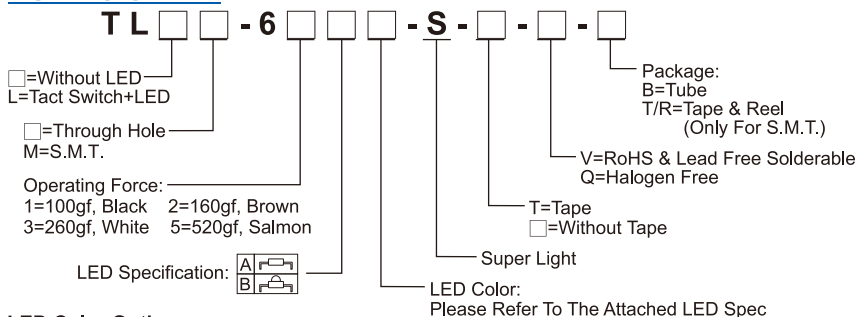
<Tube>

75 pcs.

<Tape & Reel>

450 pcs. (Only for TLLM-6)

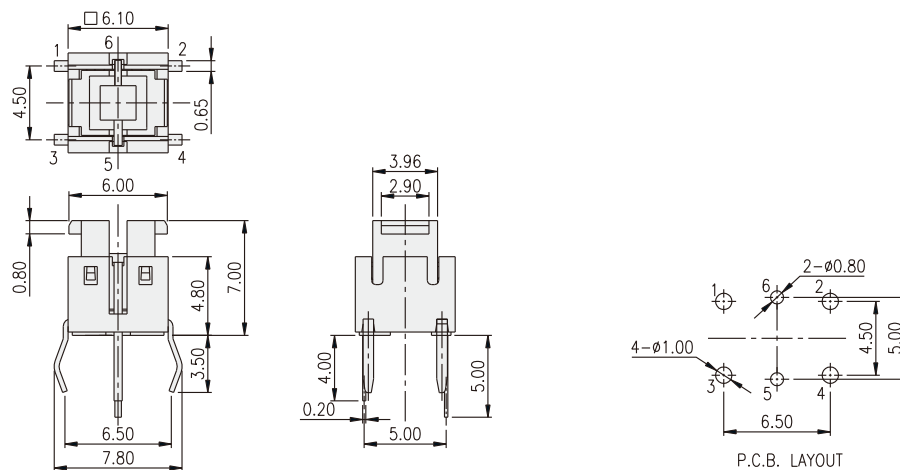
HOW TO ORDER



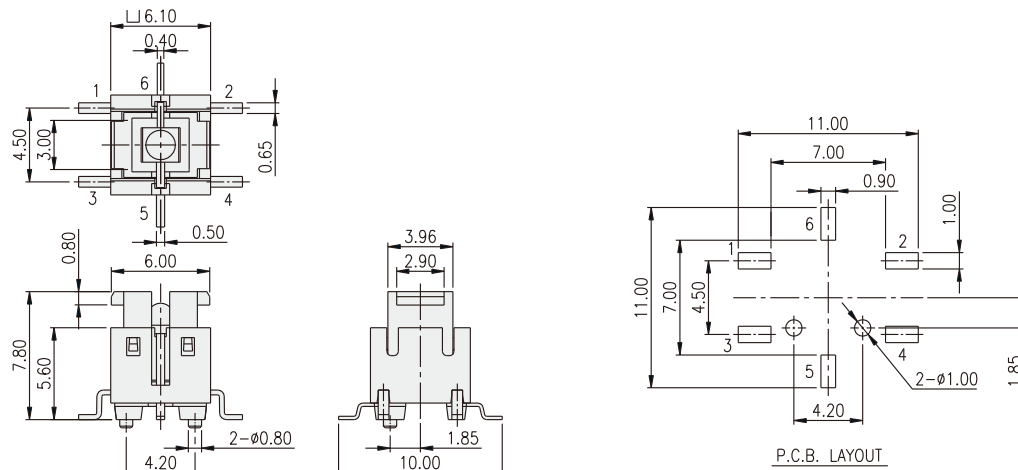
LED Color Options:

Part No.	Color	Dominant Wavelength λ_d Typ.(nm)	Luminous Intensity I_v (mcd)		Forward Voltage V_f (V)		View Angle 2- $\theta_{1/2}$ (Degree)	
			A	B	Typ.	Max.	A	B
B	Blue	470	70	1100	3.0	3.6	140°	30°
PG	Pure Gree	520	160	2500	3.2	3.6		
G	Yellow Green	570	30	550	2.0	2.3		
Y	Yellow	590	60	1500	2.0	2.3		
A	Soft Orange	605	50	1500	2.0	2.3		
O	Red Orange	620	80	3000	2.0	2.3		
R	Red	630	60	1000	2.0	2.3		
W	Cold White	X:0.30 / Y:0.30	350	550	3.0	3.6		

TLL-6□A

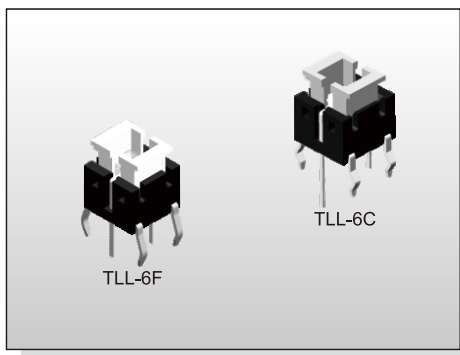


TLLM-6□B



ILLUMINATED SWITCH TL(L)(M)-6 SERIES

**Tact Switch
Illuminated**



FEATURES

- ※Super bright LED
- ※Various LED colors
- ※Options of different cap color

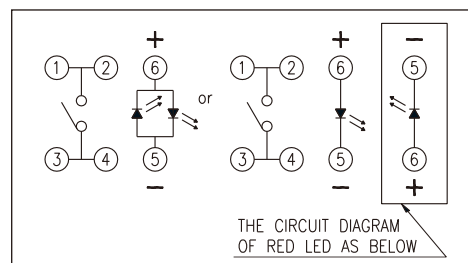
APPLICATION

- ※Server
- ※Laptop, IPC
- ※Set-top box

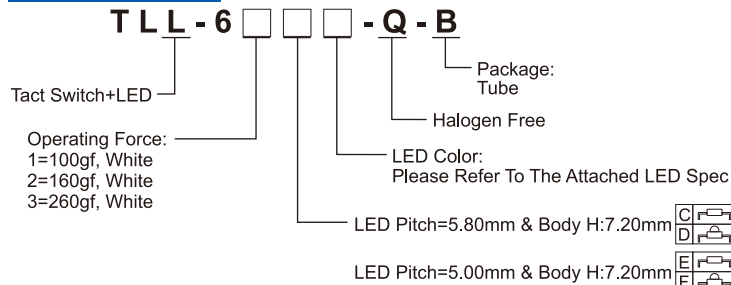
SPECIFICATION

Contact Rating	50mA, 12V DC
Contact Resistance	100mΩ max.
Insulation Resistance	100MΩ min. 500V DC
Dielectric Strength	250V AC/1 minute
Operating Force	100±50gf TL(L)-61 160±50gf TL(L)-62 260±50gf TL(L)-63
Travel	0.2mm
Operating Life	200,000 cycles for 260gf 500,000 cycles for 160/100gf
Operating Temp.	-25°C ~ +70°C
Storage Temp.	-30°C ~ +80°C

CIRCUIT



HOW TO ORDER



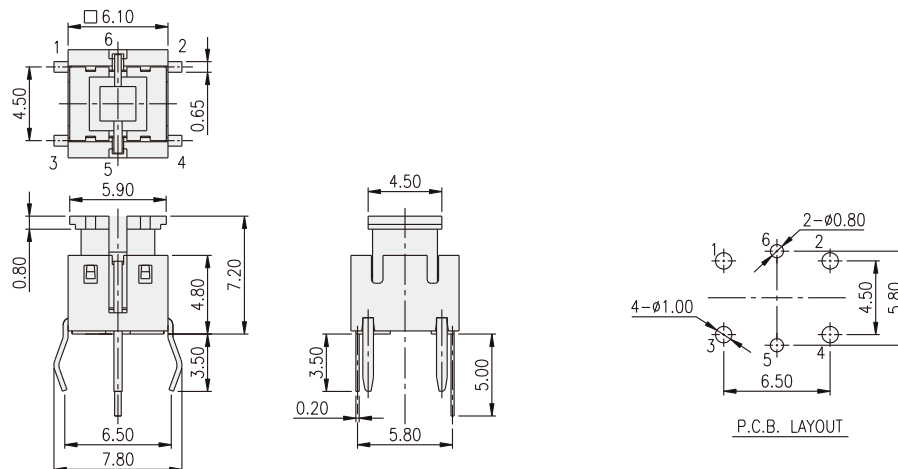
LED Color Options:

Part No.	Color	Dominant Wavelength λ _d Typ.(nm)	Luminous Intensity I _v (mcd)		Forward Voltage V _f (V)		View Angle 2·θ _{1/2} (Degree)	
			Typ.	Typ.	Typ.	Max.	C, E, F	D, F
B	Blue	470	70	1100	3.0	3.6	140°	30°
PG	Pure Gree	520	160	2500	3.2	3.6		
G	Yellow Green	570	30	550	2.0	2.3		
Y	Yellow	590	60	1500	2.0	2.3		
A	Soft Orange	605	50	1500	2.0	2.3		
O	Red Orange	620	80	3000	2.0	2.3		
R	Red	630	60	1000	2.0	2.3		
W	Cold White	X:0.30 / Y:0.30	350	550	3.0	3.6		

PACKAGE

<Tube>
75 pcs.

TLL-6□C



TLL-6□F

