

# SERIES JS 1300 SWITCHES

## NAVIGATION SWITCHES



### FEATURES & BENEFITS

- 5-position navigation
- Very low profile SMT design
- Unique design

### APPLICATIONS/MARKETS

- Consumer electronics where user interface is needed
- Handheld instrumentation
- Navigation
- Telecommunication

### SPECIFICATIONS

Contact Rating:	20mA @ 12 VDC
Life Expectancy:	200,000 actuations in any direction (X, Y, or Z)
Contact Resistance:	500mΩ
Insulation Resistance:	100MΩ
Dielectric Strength:	100 VAC
Operating Temperature:	-25°C to 70°C
Travel:	Push: 0.15 ±.01mm Tilt: .20 ±.01, (3.5+5/-1°)

### MATERIALS

Cover:	Nickel silver
Base:	Nylon
Actuator:	Nylon
Terminals:	Copper alloy, silver plated
Moving Contact:	Stainless steel, silver plated
Tape:	Teflon

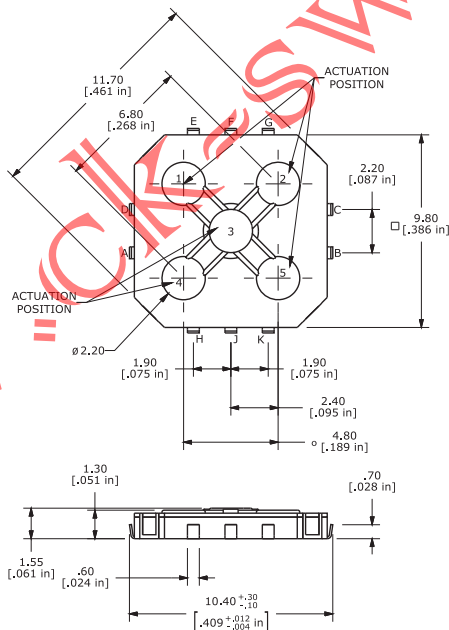
### HOW TO ORDER

SERIES	MODEL NO.	ACTUATOR ("L" Dimension)	CONTACT MATERIAL
JS	1300	A = 1.55mm	D = Silver

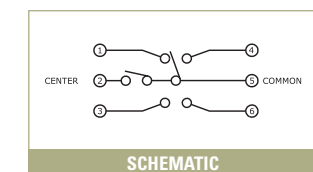
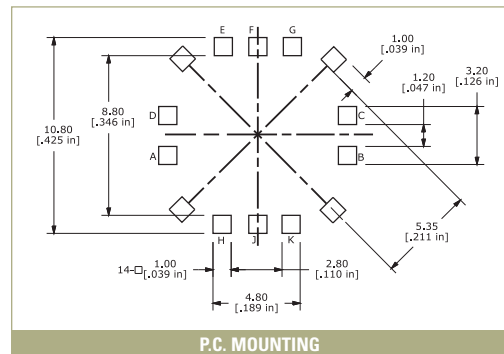
Example Ordering Number  
JS-1300-A-Q

Specifications subject to change without notice.

## JS 1300



Actuation Position	Circuit
1	D - E
2	C - G
3 (Push)	F - J
4	A - H
5	B - K



TACT  
SWITCHES

NAVIGATION  
SWITCHES

PUSHBUTTON  
SWITCHES

TOGGLE  
SWITCHES

ROCKER  
SWITCHES

SLIDE  
SWITCHES

SNAP-ACTION  
SWITCHES

DIP  
SWITCHES

KEYLOCK  
SWITCHES

ROTARY  
SWITCHES

DETECTOR  
SWITCHES

CAP  
OPTIONS