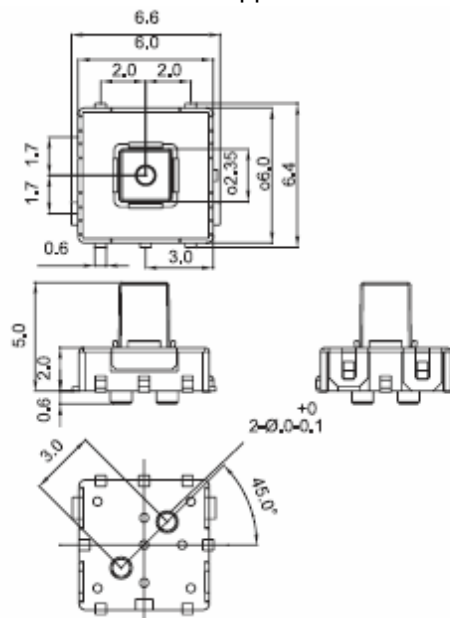


SLIDE MINI SWITCHES



B8 SERIES

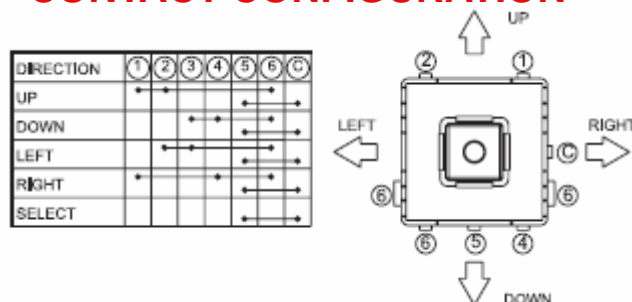
DIMENSIONS (Unless otherwise specified, a tolerance of ± 0.4 mm applies to all dimensions)



SPECIFICATIONS

Contact Resistance (initial)..... Max. 3 Ω
Insulation Resistance (at 100VDC)..... Min. 100M Ω
Electrical Service Life..... 200,000 operations
Electrical Operating Frequency..... 30 operations per minute.
Storage Temperature Range..... -40℃ to 85℃
Storage Humidity..... at 40℃, Max. 95% R.H

CONTACT CONFIGURATION



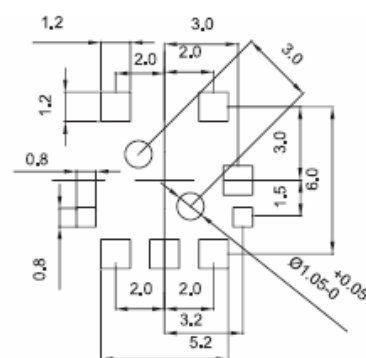
RATING

50 mA 30 VDC

APPLICATION

MP3. PDA. DSC. Mobile Phone

MOUNTING HOLES



ORDERING INFORMATION

