

5-position Navigation Switch

Multi Function
Surface mount Tape

MODEL NO.
TM-1604 Series



Features/Benefits

- *Excellent tactile feel*
- *Plunger can be custom designed*
- *SMT switch adapted for low current*
- *Only actuate 1 direction at a time*
- *Provides logic level control*
- *RoHS compliant*

Main Specifications

Electrical

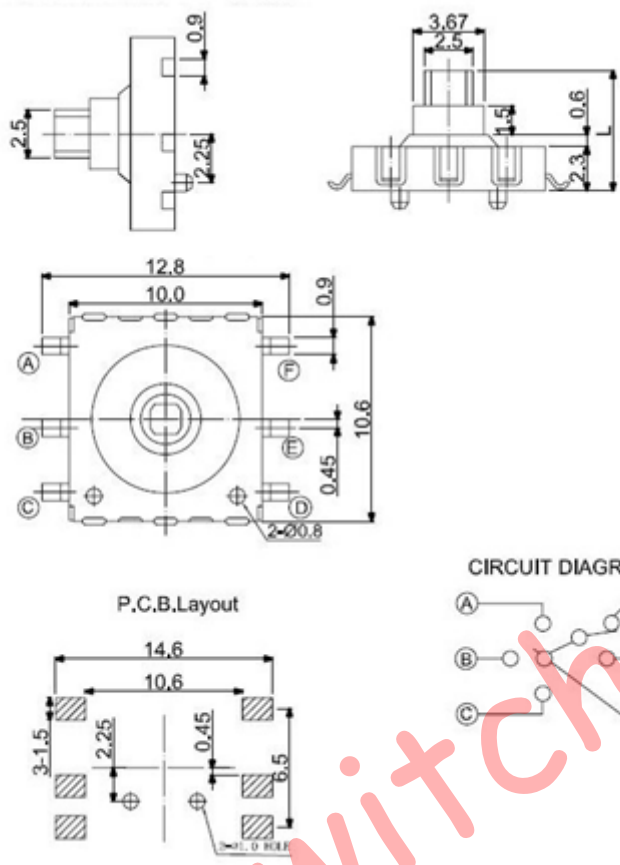
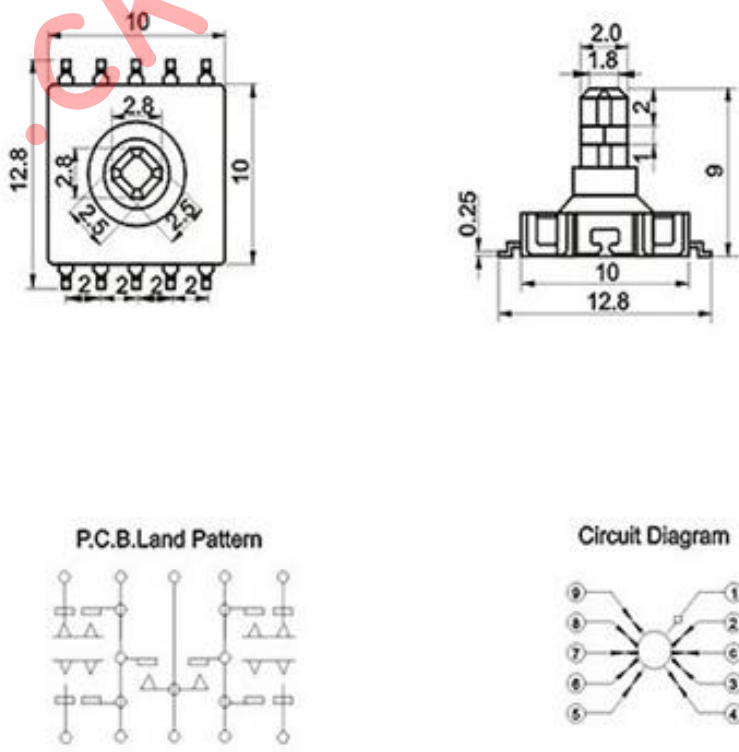
1. Operating force
 - 4-Directional : 180gf
 - Center push : 320gf
2. Travel
 - 4-Directional : 0.25mm
 - Center push : 0.15mm
3. Rating : 50mA 12V DC
4. Lifetime : 50,000 cycles
5. Initial contact resistance : 500m Ω max
6. With or Without guide bosses

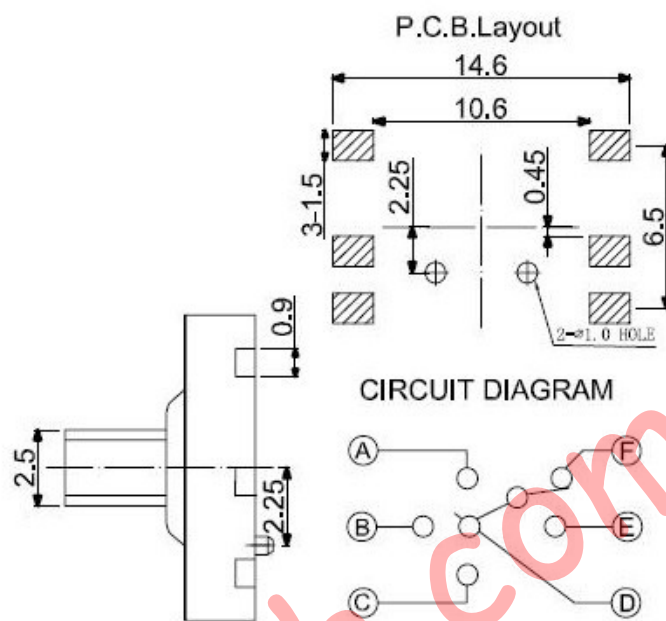
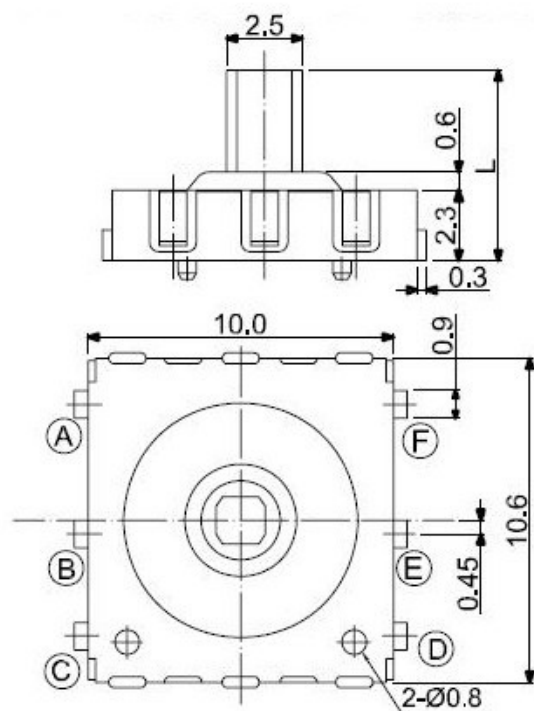
Subsidiary Production Code

Code number	Operating direction	Guide Boss	Drawing
TM-1604	Vertical options actuation	With	3

Packing Specification

Quantity(unit: pcs)	Pitch (unit: mm)	Remark
1000		

No.	3D	P.C.B pattern dimensions	Circuit Diagram
1		<p style="text-align: center;">TM-1604B</p>  <p>The 3D views show a component with a central circular feature and six pins. The top view shows a square footprint with dimensions 12.8 x 10.6. The side view shows a height of 2.5. The P.C.B. layout shows a square footprint with dimensions 14.6 x 10.6. The circuit diagram shows a central node connected to six pins labeled A through F.</p>	
2		<p style="text-align: center;">TM-1604A</p>  <p>The 3D views show a component with a central circular feature and six pins. The top view shows a square footprint with dimensions 12.8 x 10. The side view shows a height of 2.0. The P.C.B. land pattern shows a square footprint with dimensions 12.8 x 10. The circuit diagram shows a central node connected to six pins labeled 1 through 6.</p>	



www.ck-switch.com