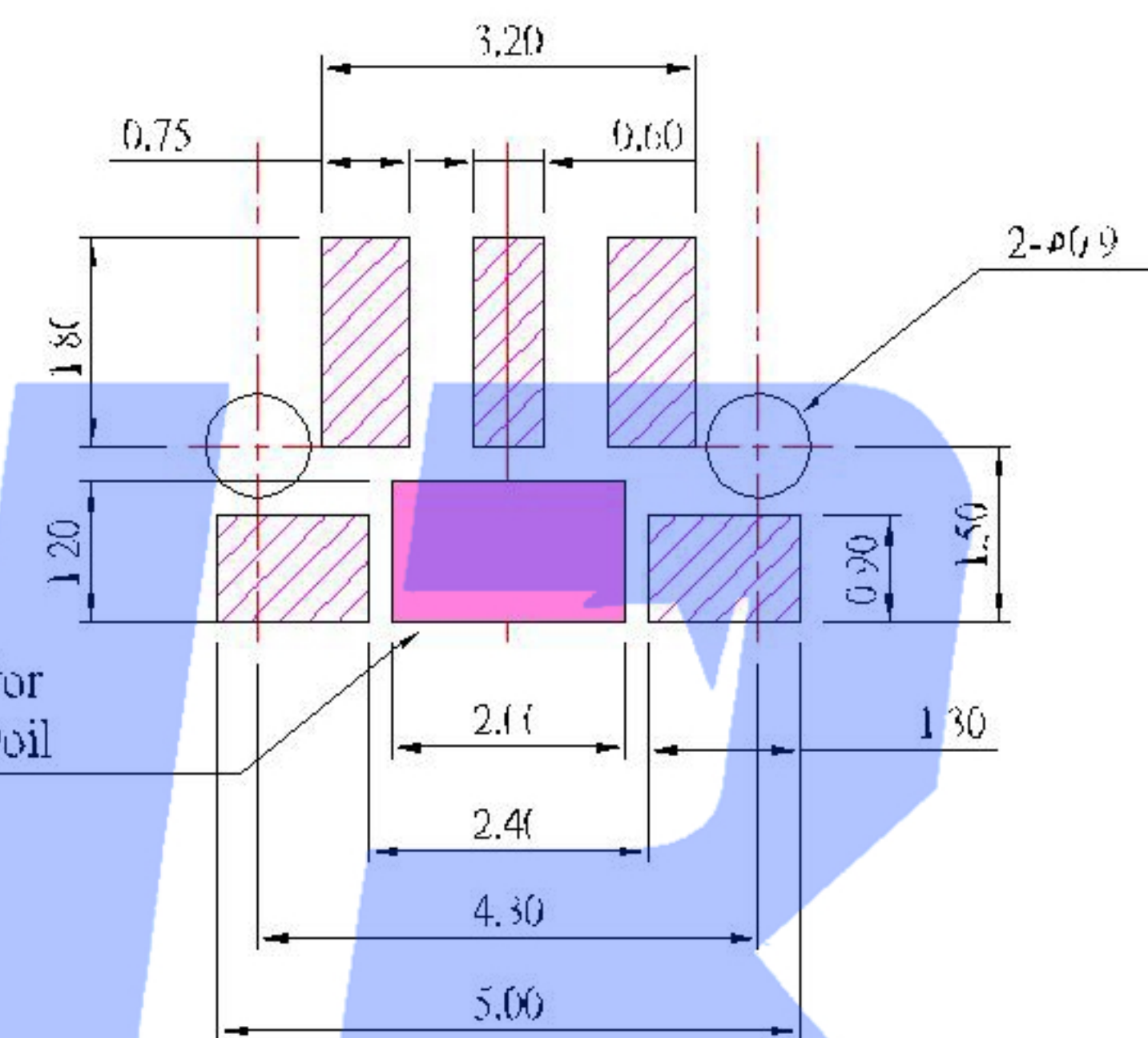
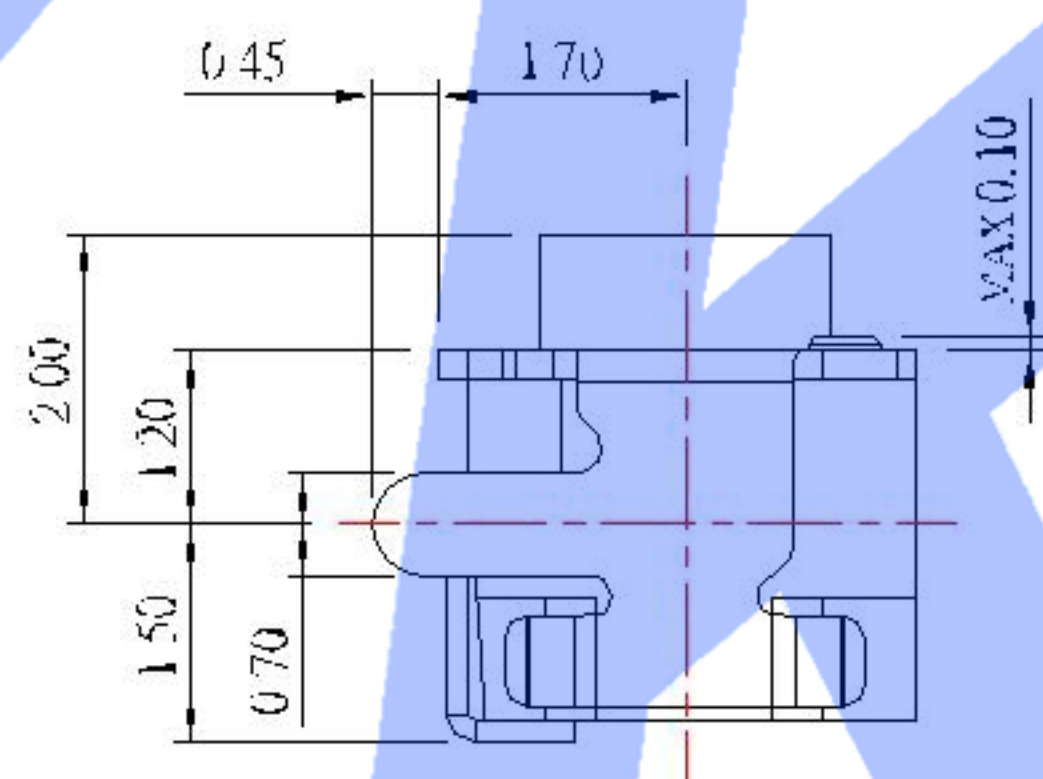


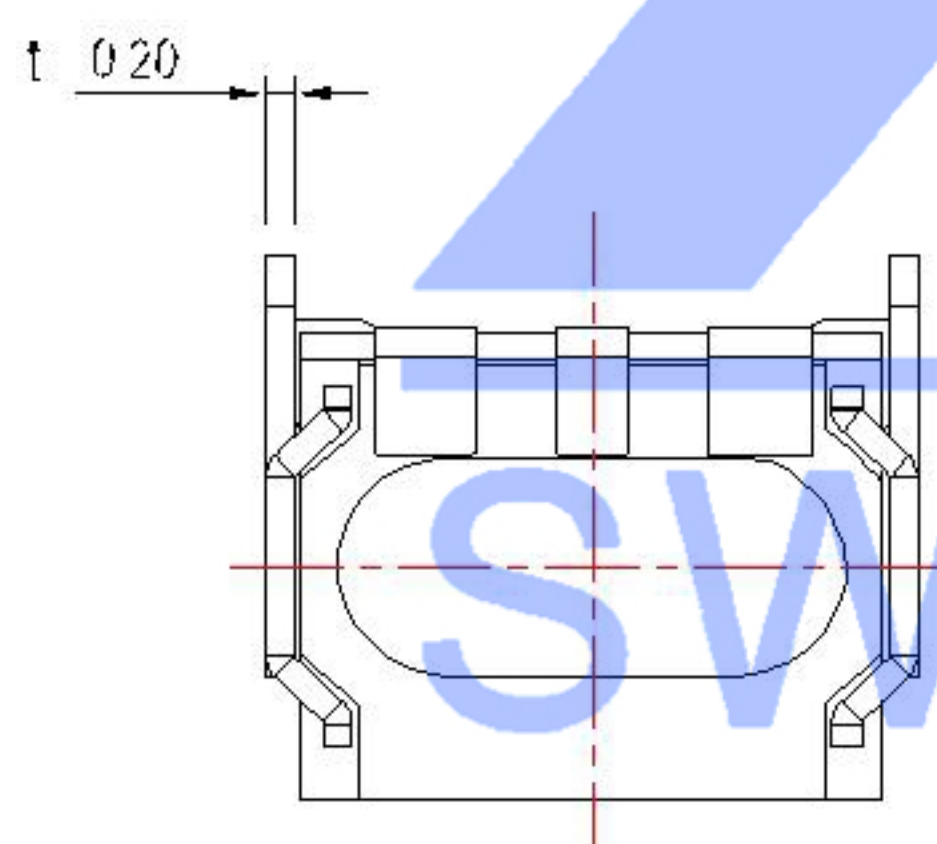
SMD REFLOW PATTERN



Prohibited area for Circuit Pattern Foil



CIRCUIT DIAGRAM



SPECIFICATION

Contact Rating	50mA, 12V DC
Contact Resistance	100mΩ max.
Insulation Resistance	100MΩ min. 500V DC
Dielectric Strength	250V AC/1 minute
Travel	0.20mm
Operating Temp.	-25°C +70°C
Storage Temp.	-30°C +80°C

PAPT NO	TS-1133-X-X
Operating Force	A: 100gf B: 160gf C: 260gf
Keystake	A: PA46 B: Silica gel

⑤	Terminal	—	3	Brass (0.30t)	ag Plated	—
④	Contact	—	2	F.ag/SUS		—
③	Base	—	1	PA46		—
②	Cover	—	1	SUS	Tin plated	—
①	Keystake	—	1	PA46		—
ITEM	PAPT NAMF	TER,NO	QTY	MATERIAL	FINISHING	REMARK

					units: mm
△X					tolerance:
△X					X.X ±0.2mm
△X					X.XX ±0.1mm
MARK	DESCRIPTION	DATE	REVISED	APPROVED	X.XXX ±0.05mm
REVISIONS					UNSPECIFIED TOLERANCES
www.xk-dg.cn www.helloxkb.com www.helloxkb.cn					

DSND		DATE		SCALE: N/A	MODEL TYPE:
DWN		DATE		VIEW:	TACT SWITCH
CHKD		DATE		UNIT: mm	PART NO.:
APPD		DATE		SIZE: A4	DWG NO.:
XKB INDUSTRIAL PRECISION CO.,LIMITED				WEIGHT	SHEET
				1.0g	1/1
				REVISION	A0