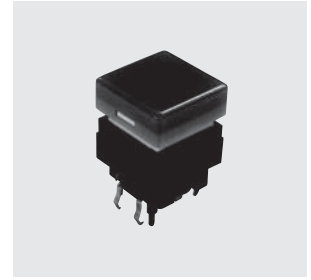


15EL

RoHS Compliant

Illuminated Pushbutton Switches



Specification

Rating	Non-switching : 1mA, DC20V Max.or 5mA,DC5V Max. Break current : Same as Non-switching Min. rating : 1mA, DC5V
Contact Resistance	200Ω Max.
Dielectric Strength	100MΩ Min. (DC100V)
Insulation Resistance	AC250Vrms 1minute
Operating Force	1.18~1.96N
Stroke	1.6±0.3mm
Operating Temperature Range	-10°C~+60°C
Storage Temperature Range	-25°C~+70°C
Electrical Life	500,000 operations
Material/Finish	Clear cover,Key top:Polycarbonate Housing,Case:GF-PBT Contact terminals:Phosphor bronze/Gold over Nickel plating LED terminal:Phosphor bronze/Gold over Nickel plating

Part Numbering

15EL - 182 - 0 01 0 - E

Series Code

Key Top Style

Code	style
122	12mm sq.
152	15mm sq.
182	18mm sq.

Key Top / LED Color

Code	Color		Code	Color	
	Key Top	LED		Key Top	LED
00	White	Yellow	03	Green	Green
01	Red	Red	04	Orange	Orange
02	Blue	Yellow Green	05	Yellow	Yellow Green

Pb Free

LED Max Rating

Code	Forward Current
0	50mA

Type and LED Specification

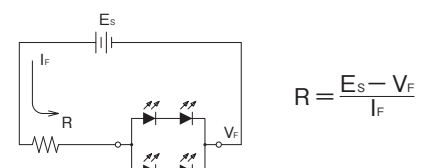
Part No.	Color		LED Characteristics					
	Key Top	LED	Max. Rating (25°C)		Forward Voltage (V _F)		Recommended Forward Current	Ambient Temperature and Allowable Forward Current
			Reverse Voltage (V _R)	Forward Current (I _F)	Standard	Max		
15EL-***-0000-X	White	Yellow	10V	50mA	4.2V	5.2V	40mA	
15EL-***-0010-X	Red	Red			4.0V			
15EL-***-0020-X	Blue	Yellow Green			4.0V			
15EL-***-0030-X	Green	Green			4.4V			
15EL-***-0040-X	Orange	Orange						
15EL-***-0050-X	Yellow	Yellow Green						

(Note 1) *** designate Key Top Style ("122" = 12mm sq., "152" = 15mm sq., "182" = 18mm sq.) .

(Note 2) The LED Characteristics show those across the LED output terminals. (Across Terminals 5 and 6)

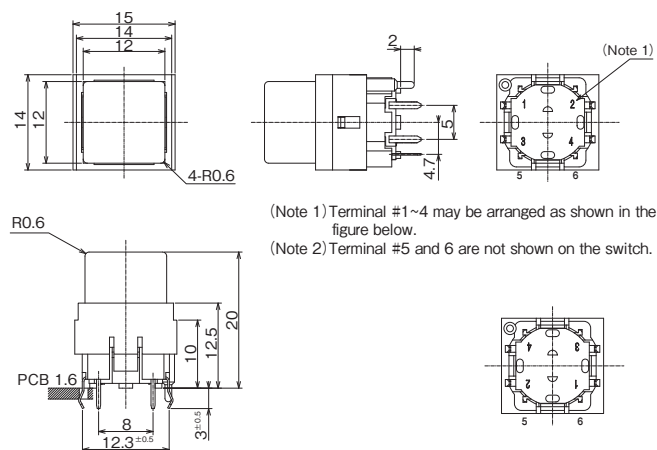
Precautions

- To prevent overcurrent of LED, connect a protective resistance (R) in series.
- R: Protective resistance ES: Supply voltage
VF: Forward voltage of LED IF: Forward current of LED

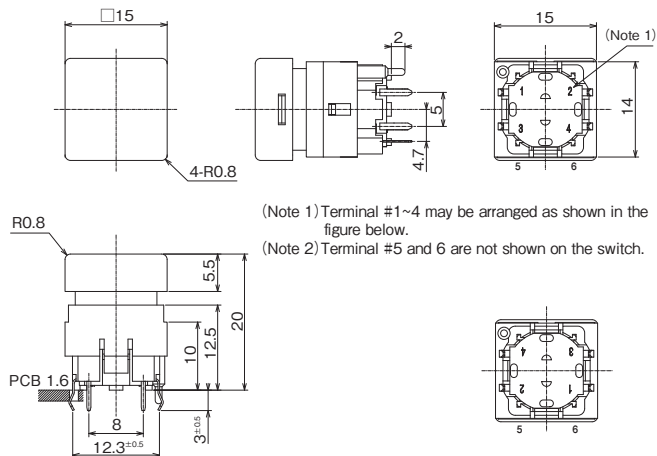


15EL

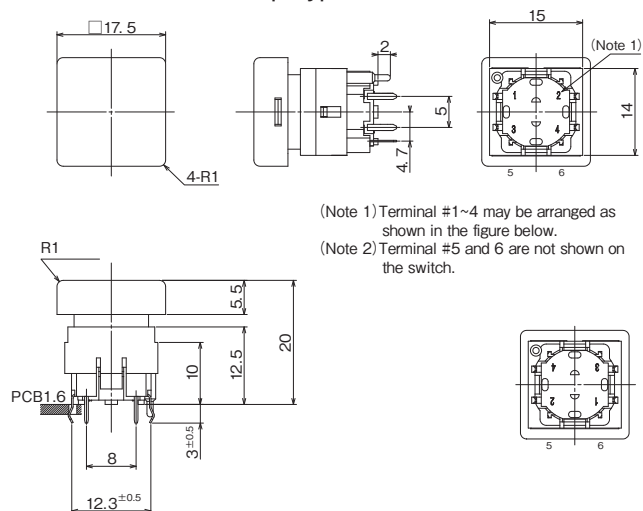
15EL-122 12 mm Sq. Type



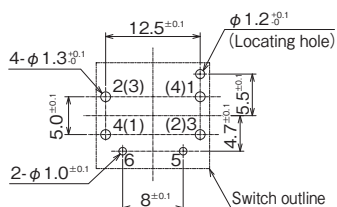
15EL-152 15 mm Sq. Type



15EL-182 18 mm Sq. Type



PC Hole Layouts



Circuit

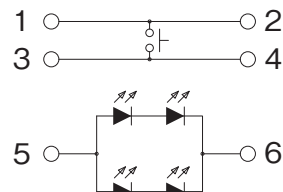
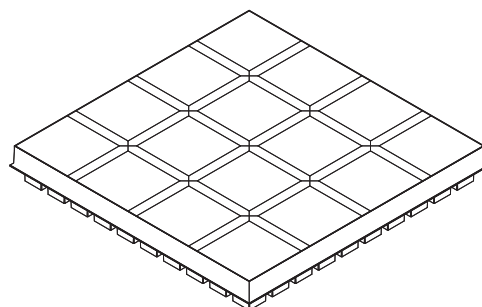


Table of Part Numbers

Part No.	Key Top Style	Key Top Color	LED Color	MOQ
15EL-122-0000-E	12mm sq.	White	Yellow	100
15EL-122-0010-E		Red	Red	
15EL-122-0020-E		Blue	Yellow Green	
15EL-122-0030-E		Green	Green	
15EL-122-0040-E		Orange	Orange	
15EL-122-0050-E		Yellow	Yellow Green	
15EL-152-0000-E	15mm sq.	White	Yellow	
15EL-152-0010-E		Red	Red	
15EL-152-0020-E		Blue	Yellow Green	
15EL-152-0030-E		Green	Green	
15EL-152-0040-E		Orange	Orange	
15EL-152-0050-E		Yellow	Yellow Green	
15EL-182-0000-E	18mm sq.	White	Yellow	
15EL-182-0010-E		Red	Red	
15EL-182-0020-E		Blue	Yellow Green	
15EL-182-0030-E		Green	Green	
15EL-182-0040-E		Orange	Orange	
15EL-182-0050-E		Yellow	Yellow Green	

Packaging Specifications

100pcs./tray



Soldering

- Hand soldering
Device : Solder iron
350°C Max. 3sec. Max.
- Auto soldering
Device : Jet wave or dip type
260°C Max. 10sec. Max. Twice