

# EIGHT SWITCH SERIES

## 8 Switch Series Selection Table

Part No.	Name	Actuator shape	Number of poles	Switching function	Terminal style	Page
<b>8H</b>	Lever • Rocker		1 • 2	ON — ON ON — OFF — ON (ON) — OFF — (ON) ON — OFF — (ON) ON — (ON)	 S/D P/C	<b>338</b>
<b>8HD</b>	Lever • Rocker (Dust Proof)		1 • 2		 S/D P/C	<b>340</b>
<b>8M</b>	Small Lever Rocker		1 • 2 • 3 • 4		 S/D	<b>342</b>
<b>8V—M</b>	Small Lever • Rocker PC		1 • 2		 P/C	<b>344</b>
<b>8Q</b>	Large Lever • Rocker		1 • 2 • 3 • 4		 S/D	<b>346</b>
<b>8V—Q</b>	Large Lever • Rocker PC		1 • 2		 P/C	<b>348</b>

●S/D : Show Solder terminal.  
 ●P/C : Show PC terminal.

Note: For overseas standards, see page 575.

(ON) : Momentary.

8 Switch Series Common Specifications

Contact specs.		Silver	Gold plated
Rating	Max.	125VAC 6A 250VAC 3A 30VAC 4A	20VDC 25mA
Initial contact resistance		10mΩ Max. (2~4VDC 1A)	20mΩ Max. (200 μVAC 1.5mA)
Initial dielectric strength		AC1500V 1 Minute	
Initial insulation resistance		1000MΩ Min. (500VDC)	
Electrical life	Altternate type	50,000 cycles	
	Momentary type	25,000 cycles	
Operating temperature range		-30~+85℃	
Strage temperature range		-40~+85℃	

Part Numbering

8

Series code

H

Actuator shape

1

Number of poles

01

Switching function

1

Terminal style

C

Contact material and plating

—

Z

Code	Type
H	Lever•Rocker
HD	Lever•Rocker
M	Small Lever•Rocker
V—M	Small Lever•Rocker
Q	Large Lever•Rocker
V—Q	Large Lever•Rocker

Fig.	Number of poles
1	1 pole
2	2 poles
3	3 poles
4	4 poles

Fig.	Switching function
01	ON — ON
02	ON — OFF — ON
04	(ON)—OFF—(ON)
05	ON — OFF —(ON)
06	ON — (ON)

Fig.	Terminal style
1	Solder Terminal
2	PC Straight

Code	Contact material	Plating
None	Bs+Ag or Cu+Ag	Ag
C	Bs+Ag or Cu+Ag	Ni+Au

Bs=Brass.

Cu=Copper.

Ag=Silver.

Ni=Nickel.

Au=Gold

Note : For some products, the part numbers according to the above-stated combinations are not registered yet. Check the Table of Part Numbers for availability.

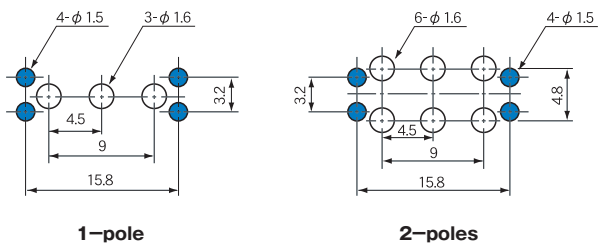
Terminal Styles

Terminal style	Solder Terminal (Style : 1)	PC Straight (Style : 2)
Dimensions		

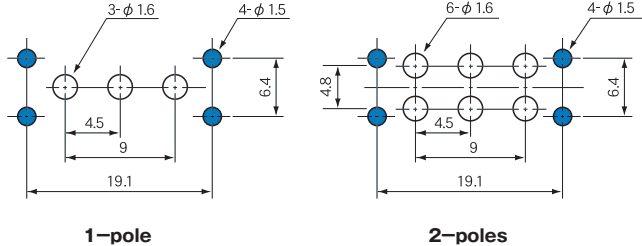
PC Hole Layouts

Dimensions	
------------	--

8V-M/PC Hole Layouts



8V-Q/PC Hole Layouts



(ON) : Momentary.

# 8HD

## Lever & Rocker Switches

Dust Proof

RoHS Compliant

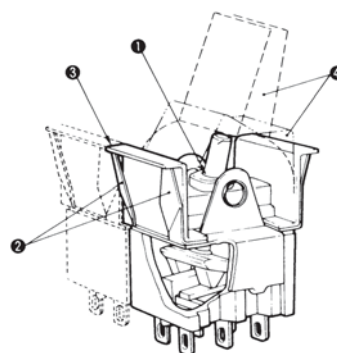


UL CSA

### Features

The **8HD** Lever & Rocker switch is a dustproof version of the **8H** type and is best suited for use in the adverse environment where a lot of dust exists. The lever, rocker, and mounting frame are available in four matted colors. Choose the suitable one for the panel design.

- 1 Dustproof structure.
- 2 Snap-in mounting on panel.  
(The hole layout is same as the **8H** type.)
- 3 The side-by-side mounting will not cause gap between switches.
- 4 Colorful mat-finished levers and rockers that enhance the panel design can be mounted.

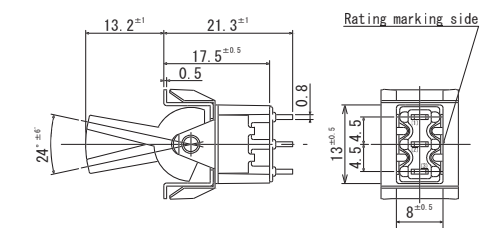
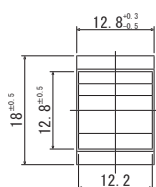


### SPDT

Dust Proof



Mount with **Lever**



Terminal numbers are not shown on the bottom of the switch.

Switching function	Viewed from rating marking side		
Part No.			
8HD101■—Z	ON	—	ON
8HD102■—Z	ON	OFF	ON
8HD104■—Z	(ON)	OFF	(ON)
8HD105■—Z	ON	OFF	(ON)
8HD106■—Z	ON	—	(ON)
Connecting terminals	2—3	—	2—1

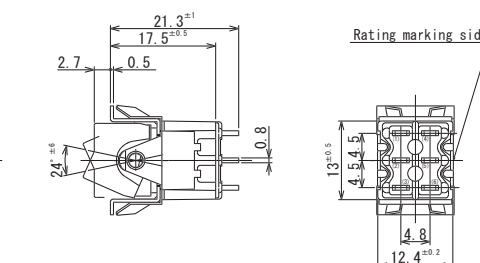
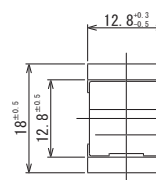
■ : Look at follows.

### DPDT

Dust Proof



Mount with **Rocker**



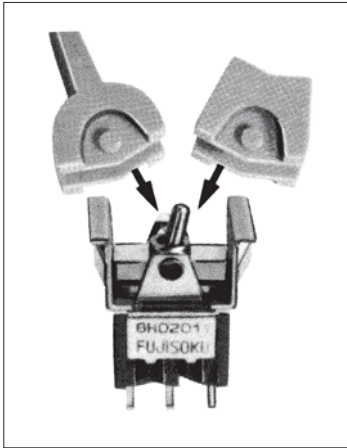
Terminal numbers are not shown on the bottom of the switch.

Switching function	Viewed from rating marking side		
Part No.			
8HD201■—Z	ON	—	ON
8HD202■—Z	ON	OFF	ON
8HD204■—Z	(ON)	OFF	(ON)
8HD205■—Z	ON	OFF	(ON)
8HD206■—Z	ON	—	(ON)
Connecting terminals	2—3 5—6	—	2—1 5—4

■ : Look at follows.

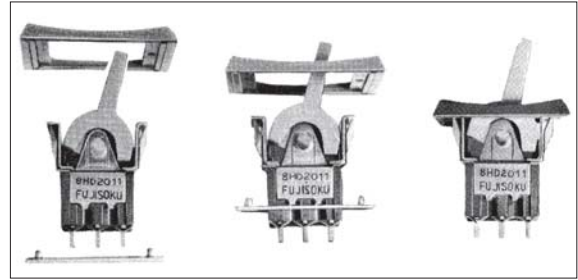
(ON) : Momentary.

## ■ Lever・Rocker Installation Procedure



## ■ Mounting Frame mounting Method

● Install the mounting frame as shown in the photo below.



● To mount the switch on the panel, press in the switch from the panel side with uniform pressure on the right and left.

## ■ Table of Part Numbers

Terminal style	Switching function	1—pole	2—pole
Solder Terminal	ON — ON	☆ 8HD1011—Z ▲ 8HD1011C—Z	☆ 8HD2011—Z ▲ 8HD2011C—Z
	ON — OFF — ON	★ 8HD1021—Z ▲ 8HD1021C—Z	☆ 8HD2021—Z ▲ 8HD2021C—Z
	(ON) — OFF — (ON)	★ 8HD1041—Z	★ 8HD2041—Z
	ON — OFF — (ON)	★ 8HD1051—Z	★ 8HD2051—Z
	ON — (ON)	★ 8HD1061—Z	★ 8HD2061—Z
PC Straight	ON — ON	★ 8HD1012—Z	★ 8HD2012—Z
	ON — OFF — ON	★ 8HD1022—Z	★ 8HD2022—Z
	(ON) — OFF — (ON)	★ 8HD1042—Z	★ 8HD2042—Z
	ON — OFF — (ON)	▲ 8HD1052—Z	▲ 8HD2052—Z
	ON — (ON)	★ 8HD1062—Z	★ 8HD2062—Z

Some products in the Table of UL and CSA-Approved Products are not registered yet. Before placing the order, check with our Sales Department.

## ■ Accessories

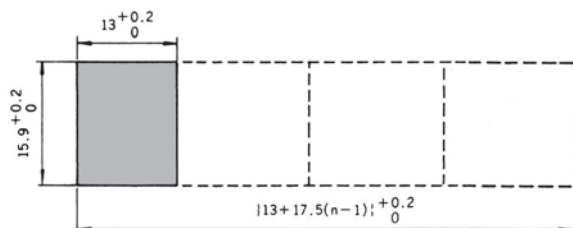
《Supplied separately》

Part Name	Standard Accessories		Optional Accessories
	Lever	Rocker	Mounting Frame
Dimensions			
White	140000050558	140000480594	140000340127 + 140000600181
Red	140000050559	140000480595	140000340128 + 140000600181
Black	140000050560	140000480596	140000340129 + 140000600181
Gray	140000050561	140000480597	140000340130 + 140000600181

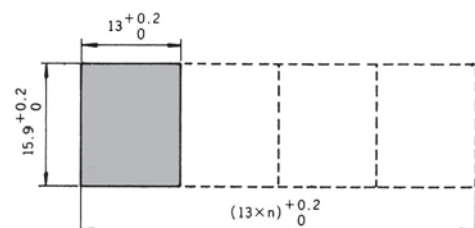
○ Specify either one of Lever or Rocker in part number when placing an order.

## ■ Panel Cut-Out Dimensions

Panel thickness (with **Mounting Frame**) : 1 to 2.5mm



Panel thickness (with **Mounting Frame**) : 1 to 3mm



★ : Made to order products. ● For Soldering Specifications and Flux Cleaning, see page 349.

□ : Optional Accessories. (ON) : Momentary.  
☆ : Semi-standard products. ▲ : Inquiry products.

# UL、CSA認定品一覧表 (Lever・Rocker Type Only)

## UL and CSA listed

### ■8Switch Series

Poles	Switching function			UL (File No.E43275)						CSA (File No.LR38341)					
				8H	8HD	8M	8V-M	8Q	8V-Q	8H	8HD	8M	8V-M	8Q	8V-Q
1-pole	101□	ON	—	ON	○	○	○	○	○	○	○	○	○	○	○
	102□	ON	—	OFF	—	ON	○	○	○	○	○	○	○	○	○
	104□	(ON)	—	OFF	—	(ON)	○	○	○	○	○	○	○	○	○
	105□	ON	—	OFF	—	(ON)	○	○	○	○	○	○	○	○	○
	106□	ON	—	(ON)	○	○	○	○	○	○	○	○	○	○	○
2-poles	201□	ON	—	ON	○	○	○	○	○	○	○	○	○	○	○
	202□	ON	—	OFF	—	ON	○	○	○	○	○	○	○	○	○
	204□	(ON)	—	OFF	—	(ON)	○	○	○	○	○	○	○	○	○
	205□	ON	—	OFF	—	(ON)	○	○	○	○	○	○	○	○	○
	206□	ON	—	(ON)	○	○	○	○	○	○	○	○	○	○	○
3-poles	301□	ON	—	ON	○	○	○	○	○	○	○	○	○	○	○
	302□	ON	—	OFF	—	ON	○	○	○	○	○	○	○	○	○
4-poles	401□	ON	—	ON	○	○	○	○	○	○	○	○	○	○	○
	401□	ON	—	OFF	—	ON	○	○	○	○	○	○	○	○	○

- (1) □ shows the terminal type of ① : Solder terminal; ② : PC terminal.
- (2) Some products in the Table of UL and CSA Listed are not registered yet. Before placing the order, check with our Sales Department.
- (3) For the registered products, refer to Table of Part Numbers of respective Series products.
- (4) When the UL and CSA approved products are required, specify "UL /CSA approved Product" when placing the order. The products will be delivered with the UL or CSA marking.

## A series

Poles	Part number	Switching function	UL (※1)
1 pole	ALE1D-2M4-10-Z	ON -OFF- ON	○
	ALE1D-5M4-10-Z		○
	ALE1E-2M4-10-Z	ON -OFF- ON	○
	ALE1E-5M4-10-Z		○
	ALE1F-2M4-10-Z	ON - (ON)	○
	ALE1F-5M4-10-Z		○
	ALE1G-2M4-10-Z	(ON) -OFF- (ON)	○
	ALE1G-5M4-10-Z		○
	ALE1H-2M4-10-Z	ON -OFF- (ON)	○
	ALE1H-5M4-10-Z		○
2 poles	ALE2D-2M4-10-Z	ON - ON	○
	ALE2D-5M4-10-Z		○
	ALE2N-2M4-10-Z		○
	ALE2E-2M4-10-Z	ON -OFF- ON	○
	ALE2E-5M4-10-Z		○
	ALE2P-2M4-10-Z		○
	ALE2F-2M4-10-Z	ON - (ON)	○
	ALE2F-5M4-10-Z		○
	ALE2R-2M4-10-Z		○
	ALE2G-2M4-10-Z	(ON) -OFF- (ON)	○
	ALE2G-5M4-10-Z		○
	ALE2S-2M4-10-Z		○
	ALE2H-2M4-10-Z	ON -OFF- (ON)	○
	ALE2H-5M4-10-Z		○
	ALE2T-2M4-10-Z		○

## Miniature Rocker Switches

Poles	Part number	Switching function	UL (※1)	CSA (※2)
1 pole	HLA112A	ON-OFF	○	○
	HLA112A12		○	○
	HLC112A		○	○
	HLC112A12		○	○
	HLS112A		○	○
	HLS112A12		○	○
	STE115A10-Z		○	○
	STE115A12-Z		○	○
2 poles	HLA208K		○	○
	HLA208K12		○	○
	HLC208K		○	○
	HLC208K12		○	○
	HLS208K		○	○
	HLS208K12		○	○

## Miniature Poewr Switches

Poles	Type	Switching function	UL (※1)	CSA (※2)
1 pole	HLA112D	ON-ON	○	○
	HLA112D12		○	○
	HLC112D		○	○
	HLC112D12		○	○
	HLS112D		○	○
	HLS112D12		○	○
	STE115D10-Z		○	○

## Miniature Rocker Switches

Poles	Part number	Switching function	UL (※1)	CSA (※2)	VDE (※4)	SEMKO (※5)	Poles	Part number	Switching function	UL (※1)	CSA (※2)	VDE (※4)	SEMKO (※5)
1-pole	SLE6A	ON-OFF	○	○	○	○	1-pole	SLE10A	ON-OFF	○	○	○	○
	SLE6A-5		○	○	○	○		SLE10A-5		○	○	○	○
	SLE6A-6		○	○	○	○		SLE10A-6		○	○	○	○
	SLE6A-7		○	○	○	○		SLE10A-7		○	○	○	○
	SLE6A-8		○	○	○	○		SLE10A-8		○	○	○	○
	SLE6A2		○	○	○	○		SLE10A2		○	○	○	○
	SLE6A2-5		○	○	○	○		SLE10A2-5		○	○	○	○
	SLE6A2-6		○	○	○	○		SLE10A2-6		○	○	○	○
	SLE6A2-7		○	○	○	○		SLE10A2-7		○	○	○	○
	SLE6A2-8		○	○	○	○		SLE10A2-8		○	○	○	○
	SLE6A4		○	○	○	○		SLE10A4		○	○	○	○
	SLE6A4-5		○	○	○	○		SLE10A4-5		○	○	○	○
	SLE6A4-6		○	○	○	○		SLE10A4-6		○	○	○	○
	SLE6A4-7		○	○	○	○		SLE10A4-7		○	○	○	○
	SLE6A4-8		○	○	○	○		SLE10A4-8		○	○	○	○
	SLE6A5	ON-ON	○	○	○	○		SLE10A5	ON-ON	○	○	○	○
	SLE6A5-5		○	○	○	○		SLE10A5-5		○	○	○	○
	SLE6A5-6		○	○	○	○		SLE10A5-6		○	○	○	○
	SLE6A5-7		○	○	○	○		SLE10A5-7		○	○	○	○
	SLE6A5-8		○	○	○	○		SLE10A5-8		○	○	○	○
	SLE6D		○	○	○	○		SLE10D		○	○	○	○
	SLE6D-5		○	○	○	○		SLE10D-5		○	○	○	○
	SLE6D-6		○	○	○	○		SLE10D-6		○	○	○	○
	SLE6D-7		○	○	○	○		SLE10D-7		○	○	○	○
	SLE6D-8		○	○	○	○		SLE10D-8		○	○	○	○
	SLE6D2		○	○	○	○		SLE10D2		○	○	○	○
	SLE6D2-5		○	○	○	○		SLE10D2-5		○	○	○	○
	SLE6D2-6		○	○	○	○		SLE10D2-6		○	○	○	○
	SLE6D2-7		○	○	○	○		SLE10D2-7		○	○	○	○
	SLE6D2-8		○	○	○	○		SLE10D2-8		○	○	○	○
1-pole	SLE6D4	ON-ON	○	○	○	○		SLE10D4	ON-ON	○	○	○	○
	SLE6D4-5		○	○	○	○		SLE10D4-5		○	○	○	○
	SLE6D4-6		○	○	○	○		SLE10D4-6		○	○	○	○
	SLE6D4-7		○	○	○	○		SLE10D4-7		○	○	○	○
	SLE6D4-8		○	○	○	○		SLE10D4-8		○	○	○	○
	SLE6D5		○	○	○	○		SLE10D5		○	○	○	○
	SLE6D5-5		○	○	○	○		SLE10D5-5		○	○	○	○
	SLE6D5-6		○	○	○	○		SLE10D5-6		○	○	○	○
	SLE6D5-7		○	○	○	○		SLE10D5-7		○	○	○	○
	SLE6D5-8		○	○	○	○		SLE10D5-8		○	○	○	○

(※1) UL File No. E43275

(※4) VDE File No. 120752

(※2) CSA File No. LR38341

(※5) SEMKO File No. 614385