

CF-PD

Nut type Pushbutton Switches

RoHS Compliant



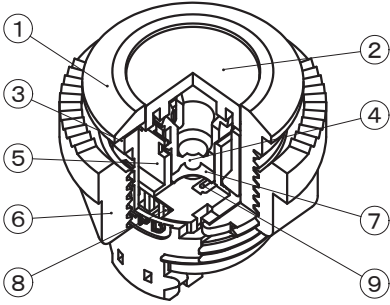
Features

- 1. Solidly design**
We added an assembly nut on LTM3-02.
It improves the strength of the panel.
- 2. Due to new design,**
it improves the strength of push button product.
- 3. Connector-wiring**
be able to one-touch fitting on the terminal parts,
without using PCB.
- 4. A light operating touch**
We adopted dome shape contact.
It provides a sharp click feeling.


Specifications

Rating	Max.	1 VA Max. (48VDC 50mA Max.)	(Resistive load)
Dielectric strength		250VAC 1 minute	
Initial contact resistance		100mΩ Max.	(200μVAC 1.5mA)
Initial insulation resistance		100MΩ Min.	(100VDC)
Electrical life		300,000 operations	
Operating force		0.98~1.76N	
Operating temp. range		-25~+70℃	

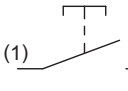
内部構造図/Internal Structure

			
Part name		Material	Flammability
①	Frame	Acrylonitrie Butadiene Styrene	UL94 HB
②	Button	Acrylonitrie Butadiene Styrene	UL94 HB
③	Cover plate	Acrylonitrie Butadiene Styrene	UL94 HB
④	Plunger	Polybutylene terephthalate	UL94 HB
⑤	Case	Polyamide	UL94 V-0
⑥	Nut	Acrylonitrile Butadiene Styrene	UL94 HB
⑦	Movable contact	Copper alloy, Silver-plated	—
⑧	Terminalpin	Copper alloy, Silver-plated	
⑨	Fixed contact	Copper alloy, Silver-plated	

Part Numbering

CF-PD-1CN-AG1 			
Series name	No. of pole(s)	Packaging specifications	
	1 1 pole	blank Plastic bag	
Switching function	Terminal style	Contact material	
C OFF — (ON)	N Connector	1 Silver plated	
Operating function	Button color		
A Standard	G Gray		

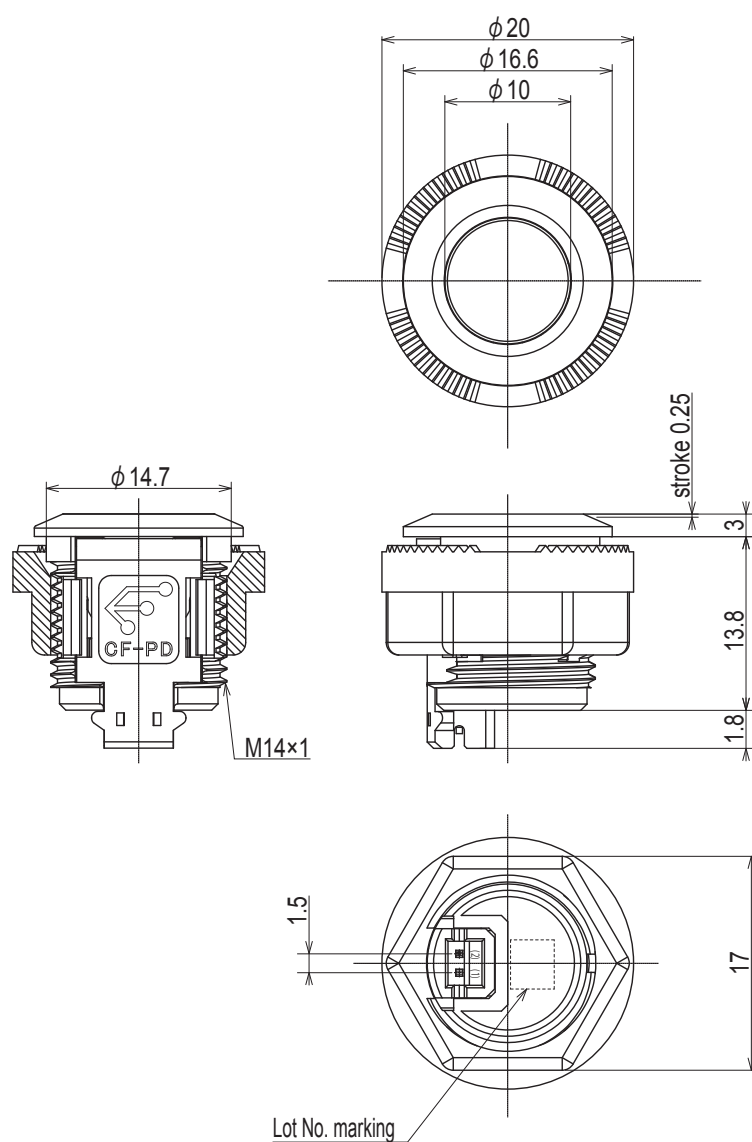
Switching Function

Part number	Switching function		Circuit diagrams
CF-PD-1CN-AG1	Free	Push	
	OFF	(ON)	
	—	(1) — (2)	

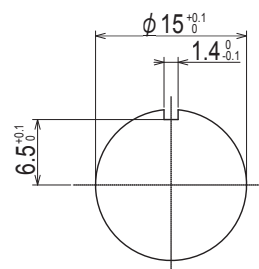
(ON): Momentary.

Outline Dimensions

Unless otherwise specified, tolerance: ± 0.3 (unit:mm)



Panel Cut-out Dimensions



Panel tickness: 1~3mm

Precautions

※Nut tighten torque : under 0.29 (N·m)

※Nut is an accessory.

Applicable Connector

ZHR-2 (Housing) by J.S.T. MFG CO.,LTD.