

SPL6R



SPECIFICATIONS

CIRCUIT: SPST

CONTACT RATING: 10mA

VOLTAGE RATING: 12VDC

DIELECTRIC WITH STANDING VOLTAGE: 250VAC for 1 minute

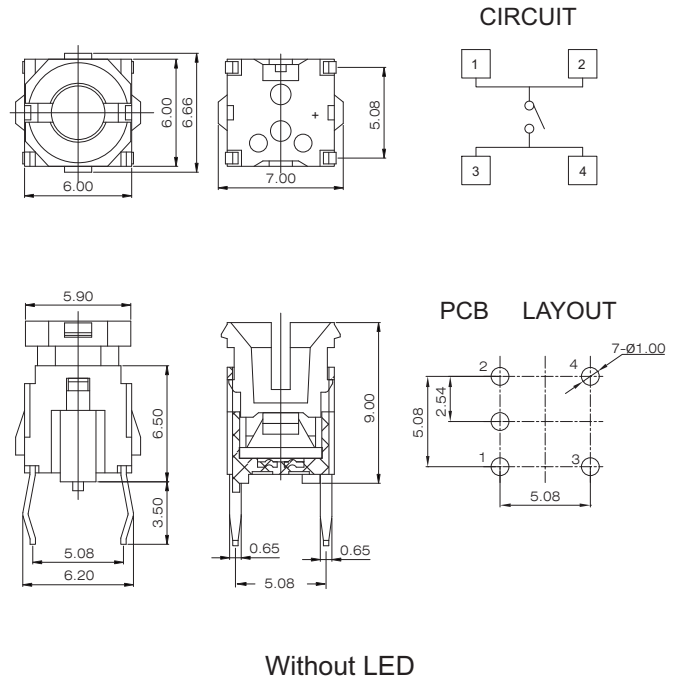
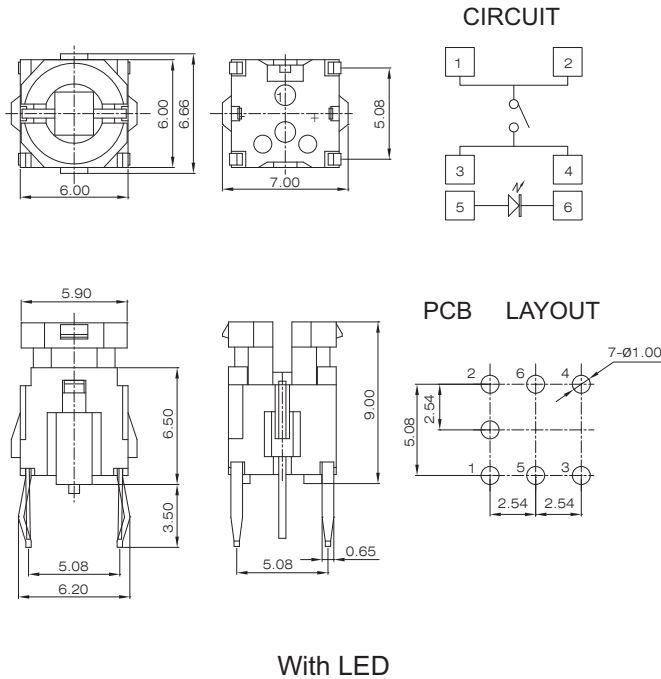
CONTACT RESISTANCE: 500Ω max.(initial)

INSULATION RESISTANCE: 100MΩ min.

OPERATION LIFE: 100,000 cycles

SOLDERING SPECIFICATION: 260°C for 3 seconds

CONDUCTIVE RUBBER CONTACT



HOW TO ORDER

SPL6R — B — ☐ — ☐ — ☐ — ☐

Switch Terminal Operation Force LED Color Package RoHS code

6*6 Illuminated tact switch (Rubber)

B = DIP Type

1 = 100gf

H = RoHS Compliant

☐ = Bag
B = Tube

☐ = Without LED
1 = White
3 = Red
5 = Yellow
6 = Green
7 = Blue