



SPECIFICATIONS

CONTACT RATING: 50mA, 24 VDC

ELECTRIC LIFE: 1,000,000 cycles

CONTACT RESISTANCE: 50mΩ max. (initial)

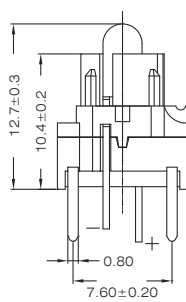
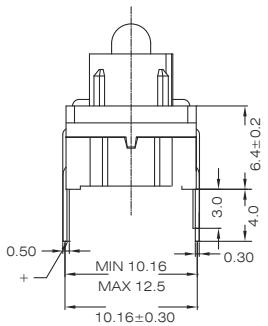
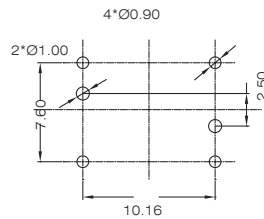
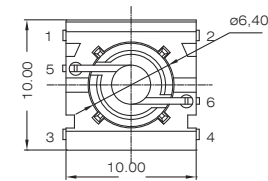
INSULATION RESISTANCE: 10MΩ min. 100VDC

DIELECTRIC STRENGTH: 250VAC/ 1 min.

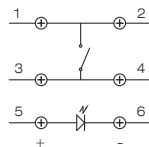
OPERATION TEMPERATURE: -40°C to +160°C



PCB LAYOUT

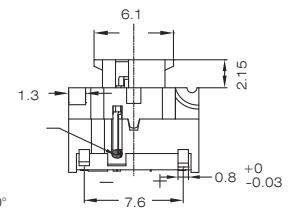
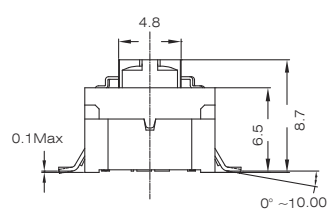
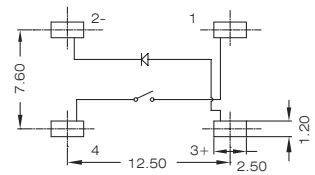
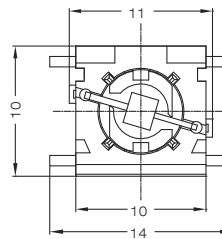


CIRCUIT



WTML1-10-C

PCB layout and Circuit Diagram



WTML2-10-M

HOW TO ORDER

WTM - 10 - - - - - - / - - H

Switch Design High Handle Terminal LED Cap Cap color/ Cap RoHS
Code (without cap) color color Support color pattern code

L1 = Standard body / stepped cover
L2 = New body / flat cover

$$\begin{array}{r} 1 = 6.4 \\ 3 = 10.4 \\ 4 = 8.7 \end{array}$$

□ = White
2 = Black

M = SMT Type
C = PC Type

☐ = None
 1 = White
 3 = Red
 5 = Yellow
 5C = Yellow(height 3mm)
 6 = Green
 7 = Blue

□ = Without cap
 B = \$ 14
 G = \$ 10
 S = Fan cap
 T1 = Support without hole
 T2 = Support with hole

H = RoHS Compliant

☐ = None
 50 = Silk screen ▲
 50C = Laser carving ▲
 51 = Silk screen ⏻
 51C = Laser carving ⏻
 52 = Silk screen OK

0	= Transparent
1	= White
2	= Black
7	= Blue
9	= Gray