



### SPECIFICATIONS

**RATING** : 16A, 26A 250/125VAC.

**CONTACT RESISTANCE** : 50 mΩ max. @ 1A 12VDC (initial value)

**INSULATION RESISTANCE** : 100 MΩ min. at 500VDC

**DIELECTRIC STRENGTH** : 1,500V RMS @ sea level

**OPERATION TEMPERATURE** : -25°C to 85°C

**MECHANICAL LIFE** : Momentary 1,000,000 cycles

Latching 500,000 cycles

**ELECTRICAL LIFE** : 16A /125&250VAC 50,000 CYCLES

26A /125&250VAC 10,000 CYCLES

**OPERATION PRESSURE** : 3.5±1.5N

**TRAVEL** : About 3.2mm

**INGRESS PROTECTION** : IP67, IK08(Stainless)

**TORQUE**: 1~3Nm.

### MATERIALS

**BUSHING** : Stainless Steel / Aluminum alloy

**BASE** : PBT(UL 94-V0) , PC(UL 94-V2)

**ACTUATOR** : PC ; Stainless Steel / Aluminum alloy

**INNER ASSEMBLY** : POM / PA66.

**SPRING** : Steel.

**SEALING** : Silicone.

**O-Ring** : Silicone.

**TERMINAL**: Brass ,Silver plated.

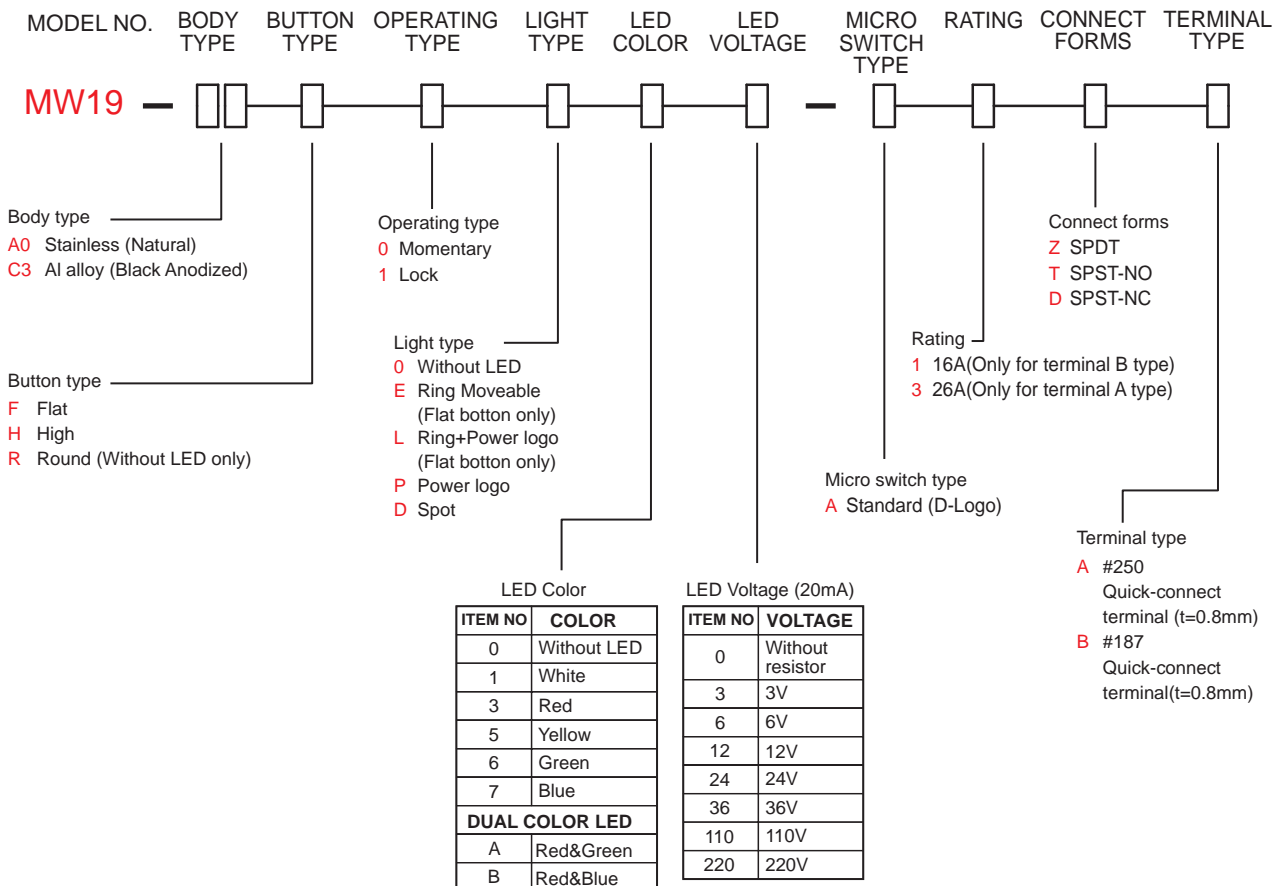
**HEX NUT** : Nickel plated brass.



IP 67  
ACCORDING TO  
EN 60529:1991+A1:2001  
IEC 60529:2001



### HOW TO ORDER



EXAMPLE:  
MW19-A0R0000-A3ZA(Without LED)

MW19-A0F0E [ ] [ ] -A3ZA

LED color — LED voltage

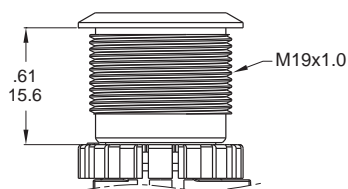


# MW19 Series

19mm High Current Metal Pushbutton Switches

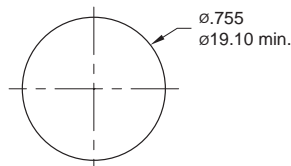
## BODY TYPE

A0/C3



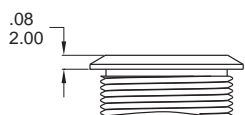
### PANEL MOUNTING

Max. Panel thickness: 10.0mm[.39]

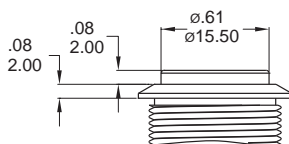


## BUTTON TYPE

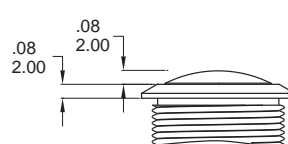
F Flat Button



H High Button

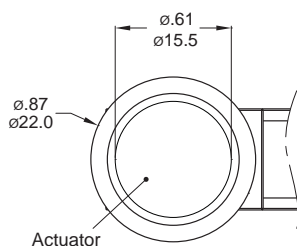


R Round Button (Without LED only)

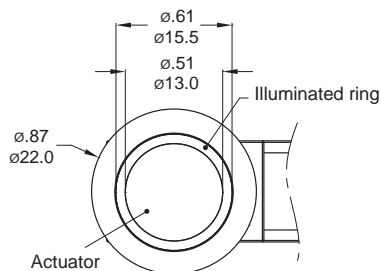


## LIGHT TYPE

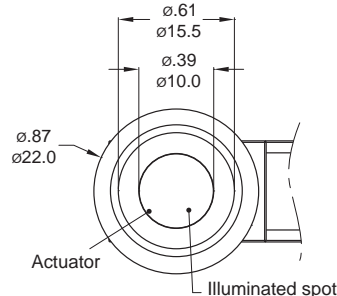
O Without LED



E Ring Moveable

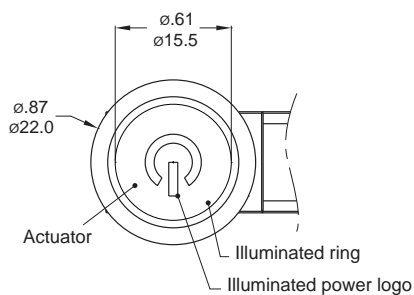


D Spot

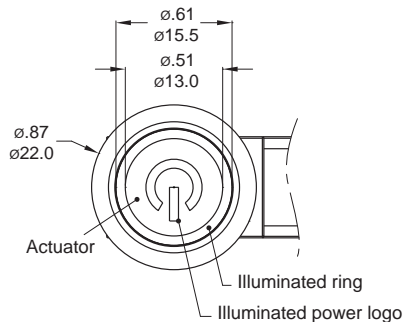


\* Flat button for E light type only.

P Power logo



L Ring+Power logo

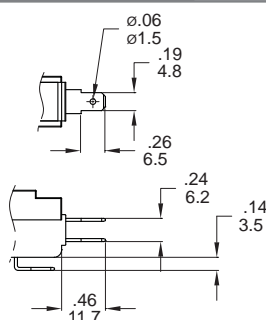


\* Flat button for L light type only.

## TERMINAL TYPE

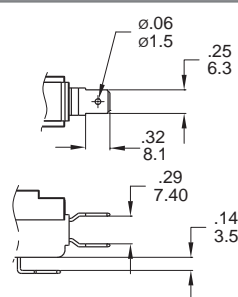
#187 Only 16A

Quick-connect terminal (t=0.8mm[.03])

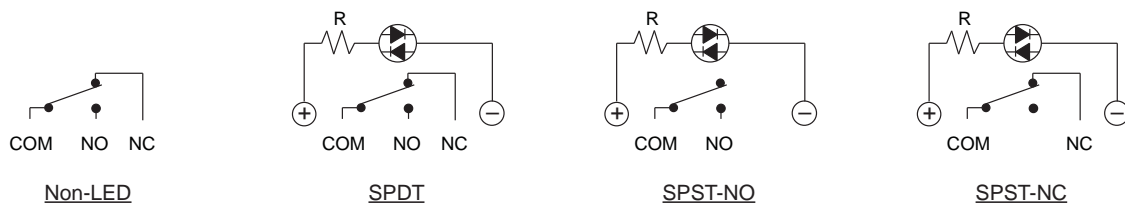


#250 Only 26A

Quick-connect terminal (t=0.8mm[.03])

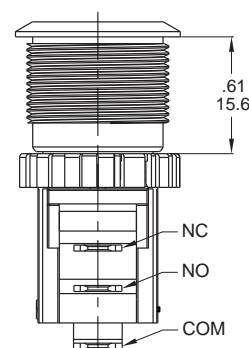
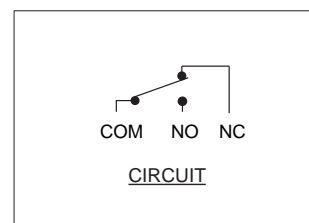
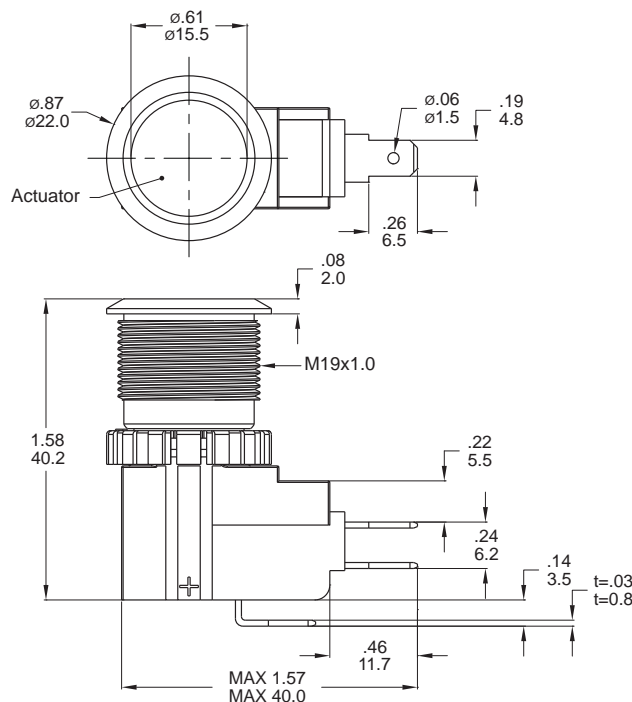


### CIRCUIT



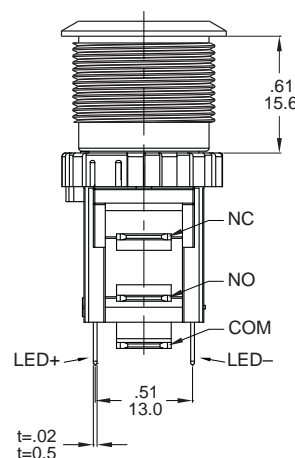
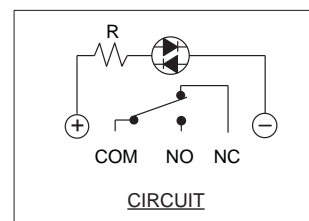
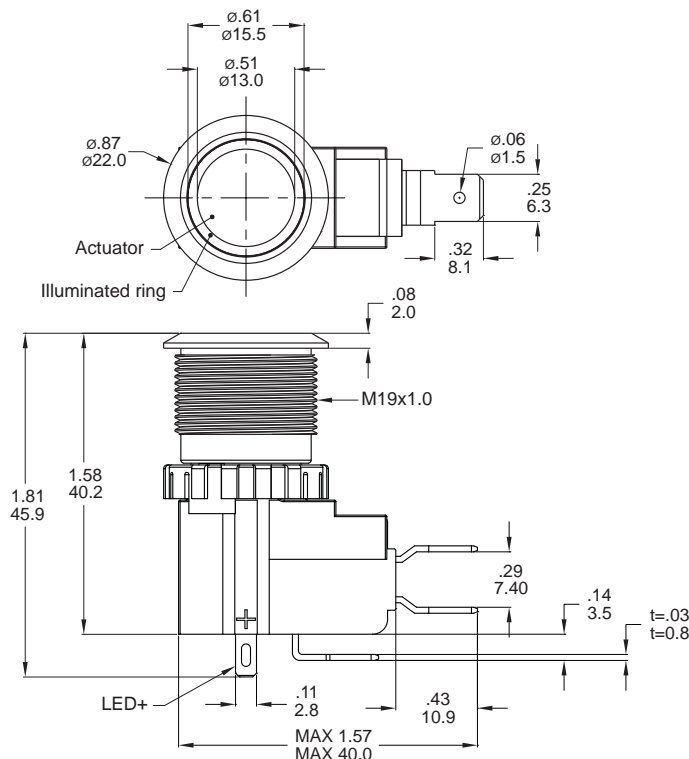
### DIMENSION

0 Without LED



Part No. Shown : MW19-A0F0000-A1ZB

E Ring Moveable  
(Flat bottom only)



Part No. Shown : MW19-A0F0E3-A3ZA