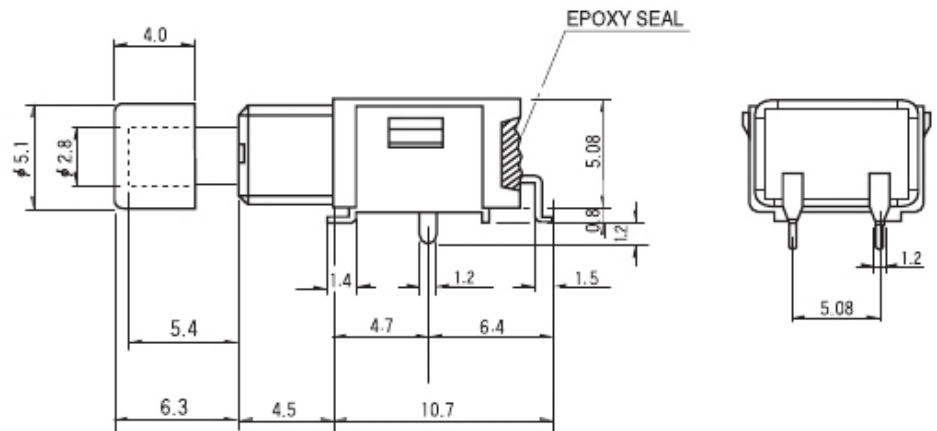
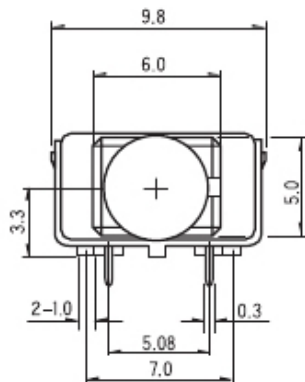
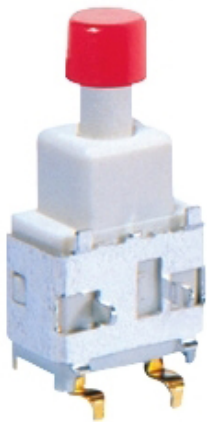


SPST

SP-11SH-S

SP-11SH-S



Order Code Order 选型表

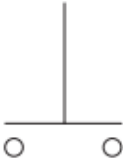
	Type	Poles	Circuit	Push Length	Terminals	SMD Type
ex)	SP	1	2	S	H	S

General Specification 产品性能

1. Rating 工作电流, 电压	0.4VA at 28V AC or DC Max.
2. Contact Resistance 接触电阻	Max 50mΩ
3. Insulation Resistance 绝缘电阻	Min 500MΩ, at DC 500V
4. Operating Force	1 Minute at AC 500V

1	Single	1	OFF-(ON)	F	0 mm	P	Straight
		2	ON-(ON)	P	3.3 mm	B	Straight W / Bracket
			() : Momentary	S	5.4 mm	H	Right Angle W / Bracket
				L	7.8 mm	V	Virtual W / Bracket

4. Operating Force 操作力	1 minute at AC 500V
5. Life Cycle 使用寿命	250±100gf (1 pole), 350±100gf (2pole)
6. Travel 移动	1.1mm
7. Ambient Temp. Range 环境温度范围	-30℃~ + 85℃
8. Solder Conditions 焊接方式	5 sec, 270℃

MODEL	POLES	CIRCUIT		SCHEMATICS
		NORMAL	DOWN	
SP-11	SPST	OFF	(ON)	
SP-12	SPDT	ON 2-3	(ON) 1-2	