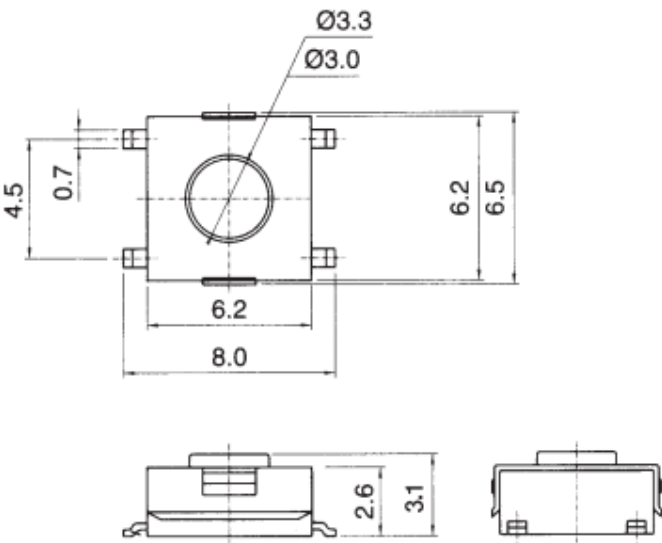
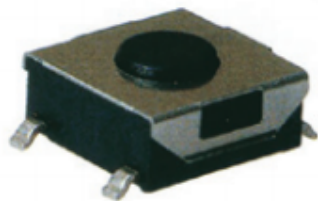


SMD TYPE

STP-1122

STP 1122



- 1. Rating 工作电流, 电压 : DC 12V, 50mA
- 2. Travel 移动 : 0.25 ± 0.1 m/m
- 3. Operating Force 操作力 : 160 ± 30 gf
- 4. Contact Resistance 接触电阻 : $100\text{m}\Omega$ Max.
- 5. Life Cycle 使用寿命 : 1,000,000 Cycles
- 6. Reel Package : 1,700PCS/REEL

Model No.	Operating Force	Stem Color
STP 1122	160gf	Black
STP 1122W	260gf	Red