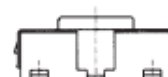
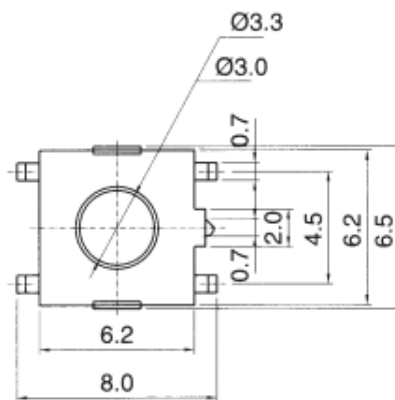


SMD TYPE

STP-1125

STP 1125



1. Rating 工作电流, 电压 : DC 12V, 50mA
2. Travel 移动 : $0.25 \pm \begin{smallmatrix} 0.2 \\ 0.1 \end{smallmatrix}$ m/m
3. Operating Force 操作力 : 160 ± 30 gf
4. Contact Resistance 接触电阻 : 100m Ω Max.
5. Life Cycle 使用寿命 : 1,000,000 Cycles
6. Reel Package : 1,700PCS/REEL