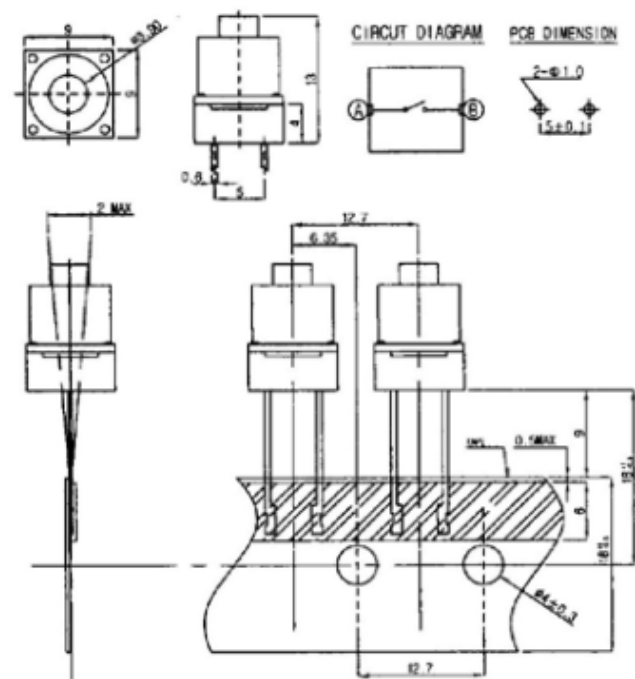
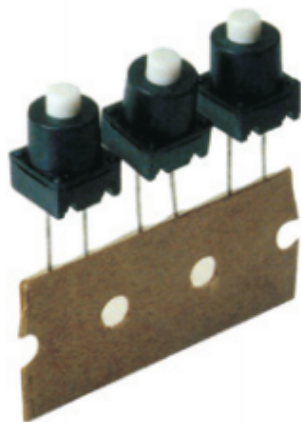


STP-1129

WATER PROOF SWITCH

STP 1129



- 1. Rating 工作电流, 电压 : DC 12V, 50mA
- 2. Contact Resistance 接触电阻 : 100mΩ Max.
- 3. Operating Force 操作力 : 160 ± 70gf
260 ± 70gf
- 4. General Tolerance : ± 0.3mm
- 5. Travel 移动 : 0.35 ± 0.1m/m
- 6. Life Cycle 使用寿命 : 100,000 Cycles
- 7. Package : 700pcs/box

Model No.	Operating Force	Stem Color
STP 1129	160gf	White
STP 1129A	260gf	Gray