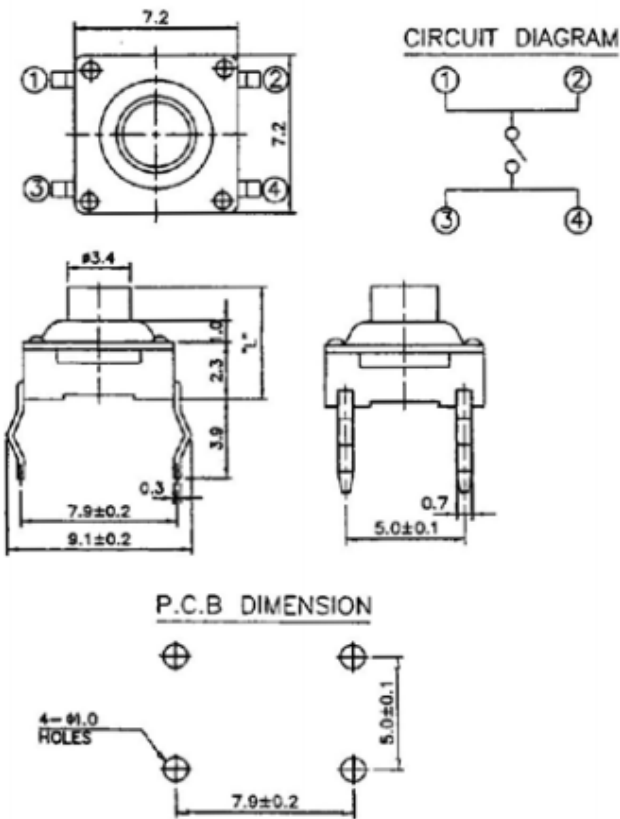


STP-1159

WATER PROOF SWITCH

STP 1159



- 1. Rating 工作电流, 电压 : DC 12V, 50mA
- 2. Contact Resistance 接触电阻 : 100mΩ Max.
- 3. Operating Force 操作力 : 160gf, 180gf, 200gf ± 70gf
- 4. General Tolerance : ± 0.3mm
- 5. Travel 移动 : 0.30 ± 0.1mm
- 6. Life Cycle 使用寿命 : 100,000 Cycles

Model No.	L	Stem Color
STP 1159	4.0	Blue
STP 1159A	5.0	Gray
STP 1159B	7.0	Black
STP 1159C	10.0	Black