

FP series

New!

Fully illuminated pushbutton switches - bushing Ø 30 mm - momentary or latching

Distinctive features and specifications



- ☐ Full actuator or symbol illumination
- ☐ Suited for integrated designs
- ☐ Large but lightweight
- ☐ Pad printed or laser etched symbols
- ☐ Snap-in and threaded bushing models

UG1410A

	Pad printing	Laser
Non-illuminated		
Illuminated		

ELECTRICAL SPECIFICATIONS

- Max. current/voltage rating with resistive load :
 - silver contacts (code 2) : 4A 12VDC
 - gold plated contacts (code 4) : 200mA 12VDC
- Initial contact resistance : 50 mΩ max.
- Insulation resistance : 1 GΩ min. at 500VDC
- Dielectric strength : 1.000 Vrms 50 Hz min.
- Electrical life at full load :
 - Momentary models : 1 million cycles (gold plated contacts)
400.000 cycles (silver contacts)
 - Latching models : 200.000 cycles

MATERIALS

- Case : PA46
- Actuator : PA12, gloss finish
- Bushing/ bezel : ABS, gloss finish
- Contacts :
 - Silver (code 2)
 - or silver, gold plated (code 4)

GENERAL SPECIFICATIONS

- Panel thickness :
 - Snap-in version : 1,5 (.059) to 2 mm (.078) with panel gasket
2 (.078) to 2,5 mm (.885) without panel gasket
 - Threaded bushing version : 1(.039) to 9 mm (.354) max.
- Total travel : 2,8 mm ± 0,5 mm
- Typical operating force : 8N ± 2N
- Low level or mechanical life :
 - Momentary models : 1 million cycles
 - Latching models : 200.000 cycles
- Torque : 2 Nm max. applied to nut
- Operating temperature : -40°C to +75°C

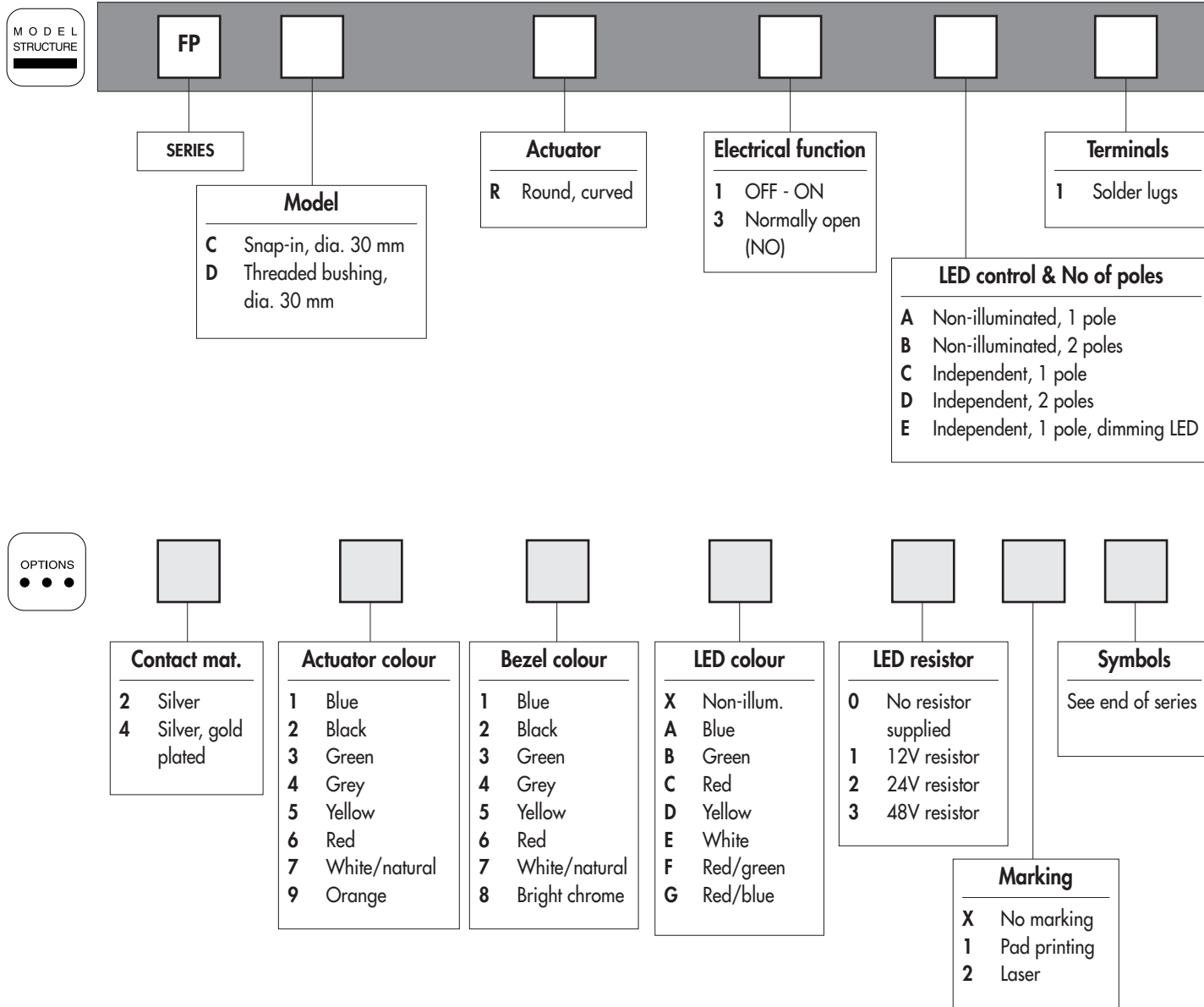
The company reserves the right to change specifications without notice.

New!

FP series

Fully illuminated pushbutton switches - bushing Ø 30 mm - momentary or latching

Overview



ABOUT THIS SERIES

On the following pages, you will find successively :
model structure of switches and options in the same order as in above chart

Dimensions : first dimensions are in mm while inches are shown as bracketed numbers.



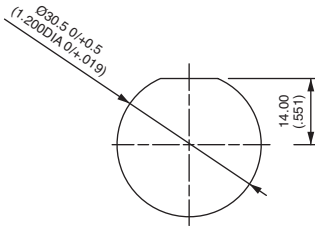
NOTICE : please note that not all combinations of above numbers are available.
Refer to the following pages for further information.



Mounting accessories : Standard hardware supplied : 1 panel gasket (snap-in versions)
1 plastic hex nut and 1 panel gasket (threaded bushing versions)



Packaging unit : 20 pieces



To order a product, replace • with one of the codes selected under "LED control and number of poles" on next page, then add the desired options.

MODEL
STRUCTURE



Snap-in mounting - solder lug terminals



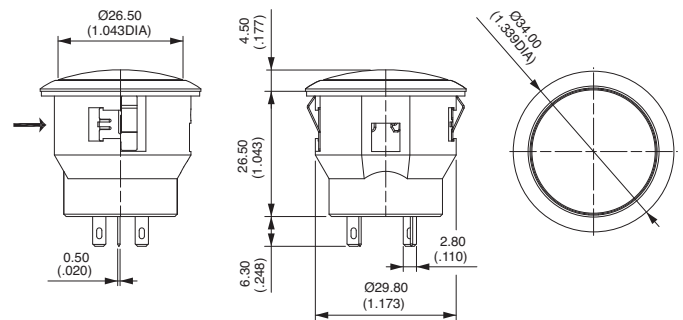
LATCHING
FPCR1•1

MOMENTARY (NO)
FPCR3•1

OFF - ON



→ Flat



Mounting by threaded bushing - solder lug terminals

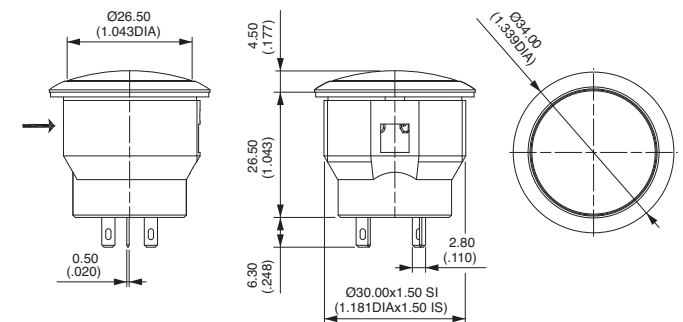
→ Flat



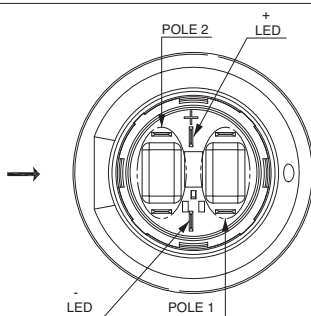
LATCHING
FPDR1•1

MOMENTARY (NO)
FPDR3•1

OFF - ON



WIRING DIAGRAM





New!

FP series

Fully illuminated pushbutton switches - bushing Ø 30 mm - momentary or latching

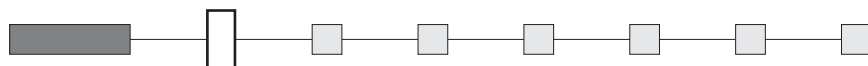
Options

LED CONTROL AND NUMBER OF POLES

Complete the model numbers on previous pages with one of the following codes.

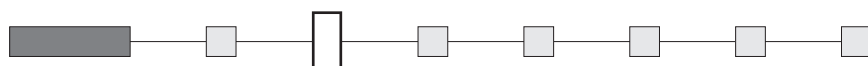
	Function 1 (latching)	Function 3 (momentary)		Function 1 (latching)	Function 3 (momentary)
Non-illuminated one pole A			Independent one pole C		
Non-illuminated two poles B			Independent two poles D		
			Independent one pole Dimming LED E		dotted line = jumper to be wired by the user. LED- has to be wired to one pin of pole 2.

CONTACT MATERIALS



- 2 Silver
4 Silver, gold plated

ACTUATOR COLOUR



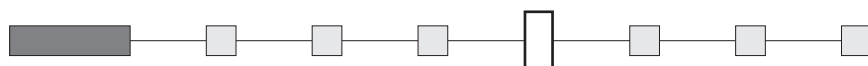
- 1 : blue - 2 : black - 3 : green - 4 : grey - 5 : yellow - 6 : red - 7 : white/natural - 9 : orange

BEZEL COLOUR



- 1 : blue - 2 : black - 3 : green - 4 : grey - 5 : yellow - 6 : red - 7 : white/natural - 8 : bright chrome

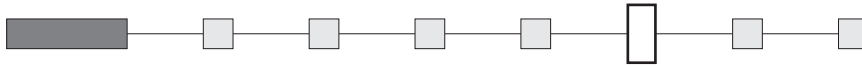
LED COLOUR



X : non-illuminated

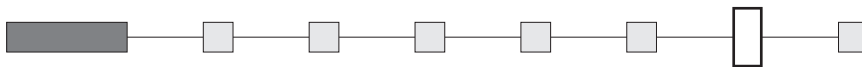
- A : blue - B : green - C : red - D : yellow - E : white - F : red/green - G : red/blue

LED RESISTOR



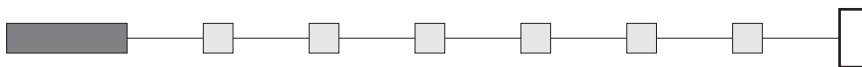
- 0 No resistor supplied
- 1 12V resistor
- 2 24V resistor
- 3 48V resistor

MARKING



- X No marking
- 1 Pad printing
- 2 Laser

SYMBOLS



- XX No symbol

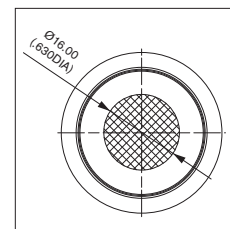
Available symbols
See end of K-range, section D.

Marking colour

White marking for illuminated actuators (laser etching) and non-illuminated black actuators (pad printing). Black marking for non-illuminated colour actuators (pad printing). Other : on request.

Marking area

The symbol will be included in the hatched area.
(this is the optimal area, larger symbols can be made on request)



→ Flat

