



SPECIFICATIONS

RATING: 2A 24VDC

ELECTRICAL LIFE: Min. 10,000 cycles.

MECHANICAL LIFE: 1,000,000 cycles.

INSULATION RESISTANCE: 100 MΩ Min. at 500VDC.

DIELECTRIC STRENGTH: 500Vrms @ sea level. (initial value)

CONTACT RESISTANCE: 100 mΩ Max. @ 1A/12VDC (initial value)

Note: When the switches with the wire assembly, we only test the electric conduction and will not test the contact resistance on the wire.

OPERATING TEMPERATURE RANGE: -20°C ~ 65°C

TRAVEL: 1.5(.059inch)±0.3 mm

OPERATION PRESSURE: 7N±2N.

INGRESS PROTECTION: IP67(In house test)

TORQUE: 0.5 to 1 Nm max.

Materials

CASE & BUSHING: Nylon 6/6

CAP: Polyurethane

BUTTON: Stainless steel

ACTUATOR: POM

NUT: SPCC(Nickel Plated)

O-RING: Silicone(Translucent)

HOW TO ORDER

MODEL NO.

PMD16

CASE & BUSHING

P21 Black nylon

CAP COLOR

ITEM NO	COLOR
01	White
02	Black
03	Red
05	Yellow
06	Green
07	Blue

CONNECT FORMS

Z SPDT

T SPST-NO

D SPST-NC

WIRE TYPE

L001 500mm wire leads 20 AWG (std)

*

* For other colors information please consult sales representative.

EXAMPLE:

PMD16-P21□□-L001 (STD)
 □ Connect forms
 □ Cap Color

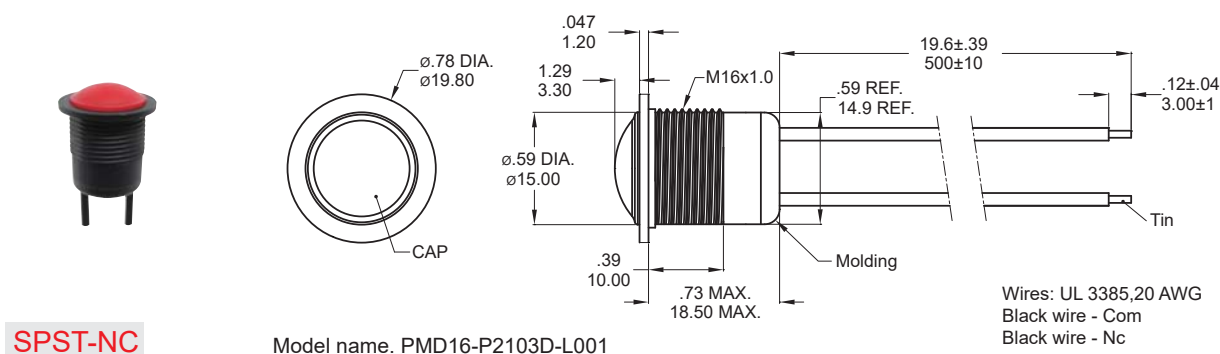
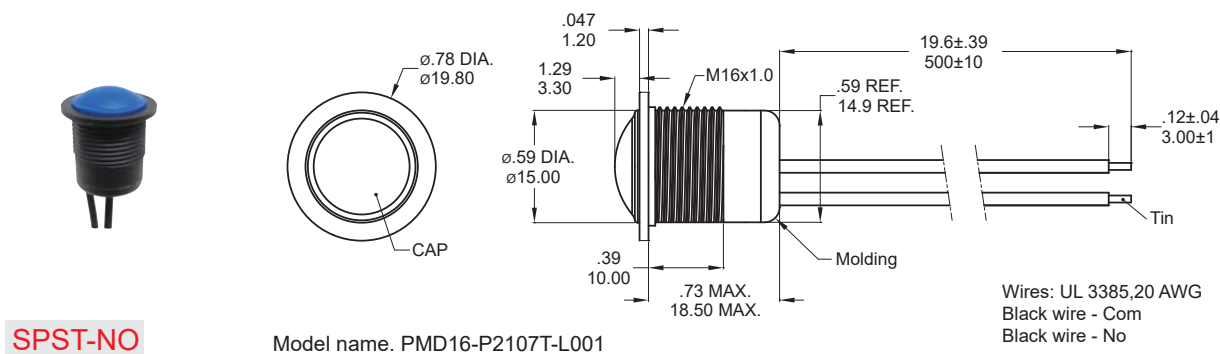
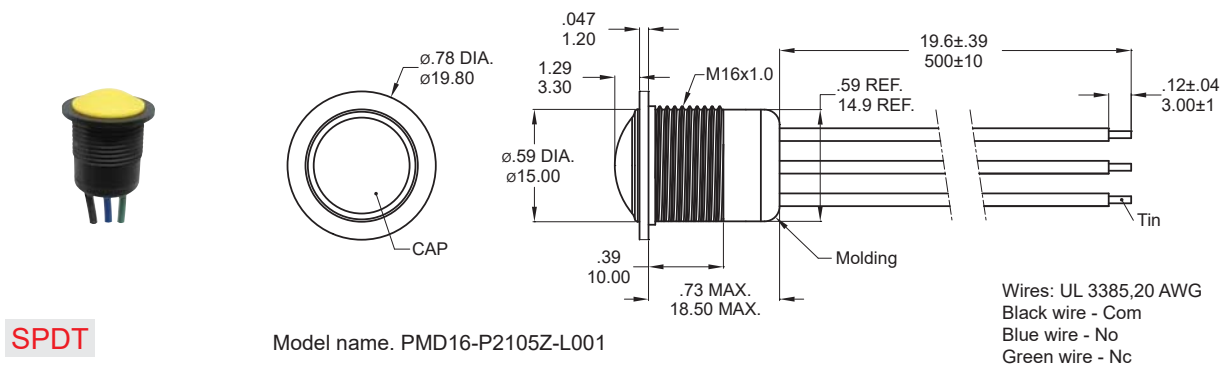


▼ SWITCH FUNCTION

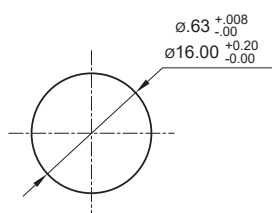
NO. POLES	MODEL NO.	SWITCH FUNCTION		CONNECTED TERMINALS / SCHEMATIC					
		POS.1	POS.2	POS.1			POS.2		
				OPEN			COLSE		
SP	PMD16	OFF	(ON)						
				Com No Nc	Com No	Com Nc	Com No Nc	Com No	Com Nc

()=MOMENTARY

▼ POLE OPTIONS



▼ PANEL MOUNTING & HARDWARE



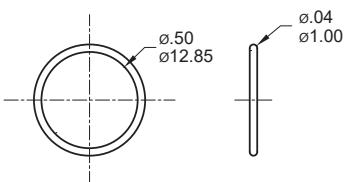
Panel thickness: .276inch(7mm) max.

* Standard hardware : 1 nut, 1 O-ring

* For further information please consult sales representative.

O-RING (Std.)

Model name. FCP-MP602



NUT (Std.)

Model name. MNU-MP601

