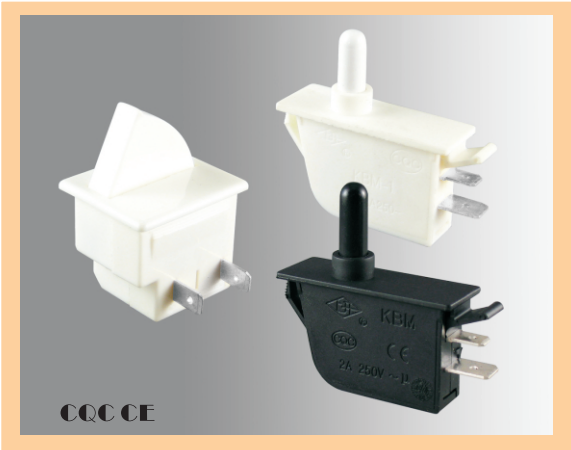


KBM系列冰箱门控开关
KBM Series Refrigerator Door Switchs



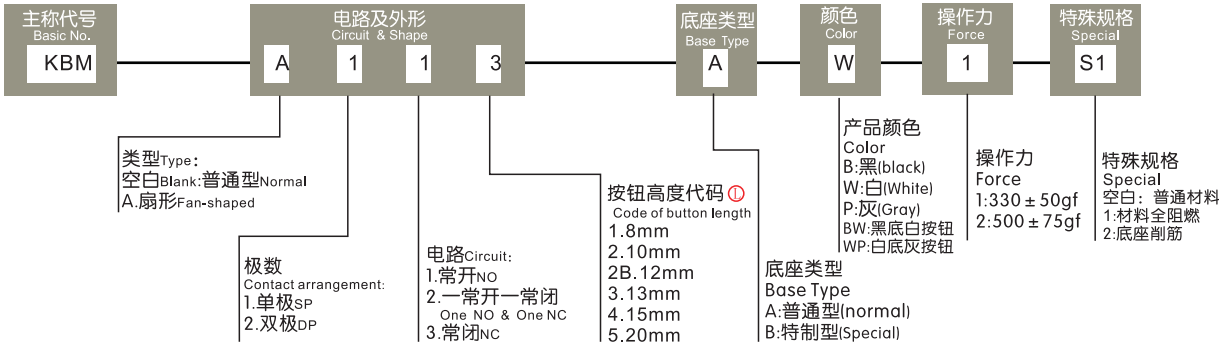
版本: A 更新日期: 2011-01-13



技术性能参数SPECIFICATION

电气额定值 (阻性负载)	KBM:2A /250V AC
Max. Rating Current & Voltage(Resistive Load)	KBM-A:4A /250VAC
接触电阻 (初始值)	≤50mΩ
Contact Resistance	
绝缘电阻 (常态)	≥1,00MΩ
Insulation Resistance	
耐压 (常态)	KBM:1,500V, KBM-A:1000V
Dielectric Strength	
电气寿命 (次)	10,000
Electronic Life(cycles)	
机械寿命 (次)	50,000
Mechanical Life(cycles)	
工作环境温度	-5℃~+55℃
Operating temperature	
防护等级	IP40
IP code	

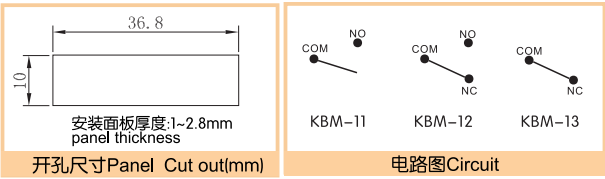
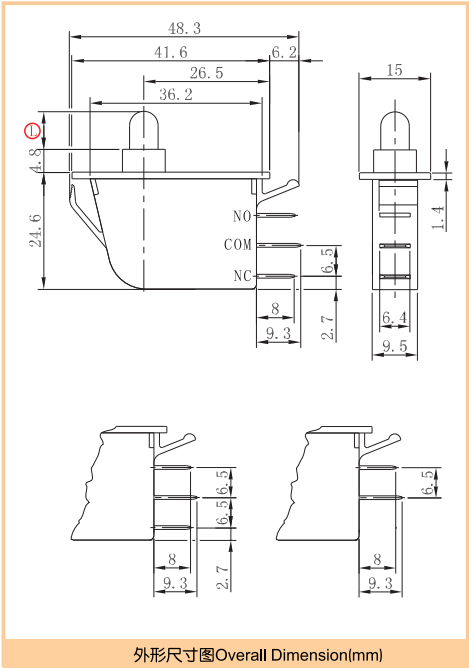
型号命名规则 HOW TO ORDER



举例 Example:KBM-113-A-W-2

解释:单极常开3号按钮,普通底座,全白外壳,操作力为500gf,全阻燃材料,普通型冰箱门控开关

KBM



型号列表Model List

单极常开 NO.	单极常开常闭 NO.&NC.	单极常闭 NC.
KBM-111	KBM-121	KBM-131
KBM-112	KBM-122	KBM-132
KBM-113	KBM-123	KBM-133
KBM-114	KBM-124	KBM-134
KBM-115	KBM-125	KBM-135

注:本产品默认颜色为白色, 其他颜色及特殊型号请联系本公司。

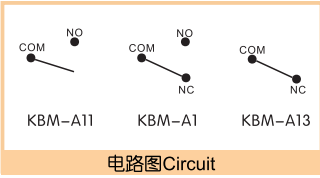
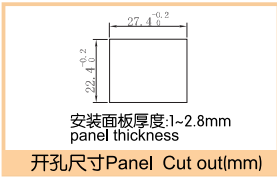
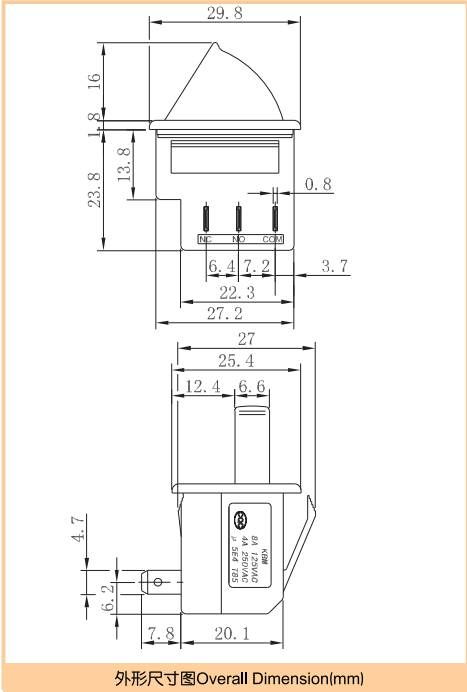
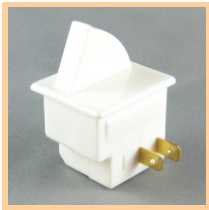
Note: This product is the default color is white, other colors and special models,please contact the Company.



KBM系列冰箱门控开关  
KBM Series Refrigerator Door Switches



KBM-A



单极常开 NO.	单极常开常闭 NO.&NC.	单极常闭 NC.
KBM-A11	KBM-A12	KBM-A13

注:本产品默认颜色为白色, 其他颜色及特殊型号请联系本公司。  
Note: This product is the default color is white, other colors and special models, please contact the Company.

型号列表Model List

KBM产品图例 EXAMPLE



KBM-112-W



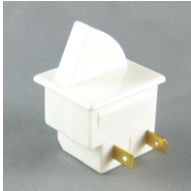
KBM-113-W



KBM-113-P



KBM-114-B



KBM-A13-W

编制:                      审核:                      批准: