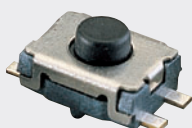


NTC016 Series

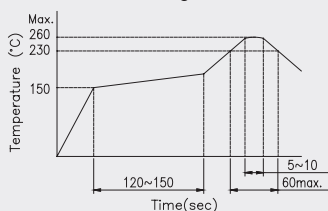
Features

- Compact size 3.5x4.7mm.



Rating (max)	DC12V 50mA
Contact Resistance	500mΩ max.
Insulation Resistance	DC500V-100MΩ min.
Withstand Voltage	AC250V - 1 minute
Stroke	0.3 ^{+0.1} _{-0.2} mm

Recommended Reflow Soldering Profile



Number of Reflow Pass : 2 cycles

Recommended Manual Soldering Profile

	Temperature	Time
Manual Soldering Temperature	350 °C (max.)	3 Sec.(max.)

The solder iron and solder shall be applied at a distance of 1.91 mm to 2.54 mm from the plastic housing.

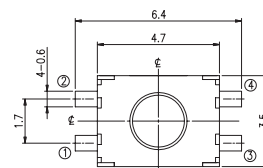
Operating Force & Durability

100 ± 50gf	300,000 cycles
160 ± 50gf	300,000 cycles
260 ± 50gf	100,000 cycles

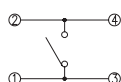
SMT- G Type Vertical 3.5L x 4.7W x 2.5H

Outline Drawing

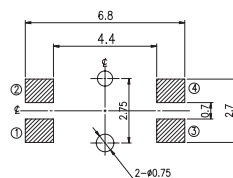
Product No.	Boss	Package
NTC016-AA1G-A__T	With	2,500 Pcs/Reel
NTC016-AB1G-A__T	Without	



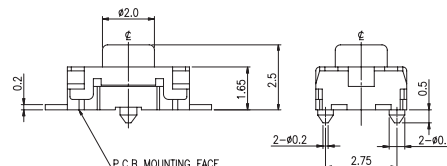
Schematic



P.C.B Layout



HATCHED AREA SHOWS SOLDERING LAND

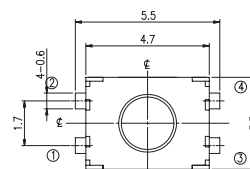


General Tolerance : ±0.2mm.

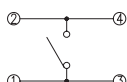
SMT- J Type Vertical 3.5L x 4.7W x 2.5H

Outline Drawing

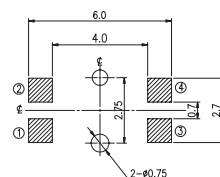
Product No.	Boss	Package
NTC016-AA1J-A__T	With	2,500 Pcs/Reel
NTC016-AB1J-A__T	Without	



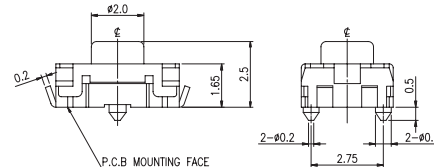
Schematic



P.C.B Layout



HATCHED AREA SHOWS SOLDERING LAND



General Tolerance : ±0.2mm.