



SPECIFICATIONS

RATING : 5-24VADC/1A PULSE MODE.

OPERATING LIFE : 50 Million cycles min.

CONTACT RESISTANCE : 1Ω MAX.

OPERATING TEMPERATURE: -20°C to 65°C.

MATERIALS

BUSHING: Aluminum alloy / Stainless steel.

SEALING : Silicone, EPOXY.

HEX NUT : Nickel plated brass.

HOW TO ORDER

MODEL NO.	BUSHING	CONTACT CONFIGURATION	RATING	BODY TYPE	BUTTON TYPE	LIGHT TYPE	CAP MARKING	LED COLOR	WIRE
PTZ	16 16mm * 19 19mm 22 22mm * Not available with LED	N Momentary /Pulse		C1 Al alloy, Non-flat ** (Natural anodized) F1 Al alloy, Double flated (Natural anodized) F3 Al alloy, Double flated (Black anodized) D0 SUS 304, Double flated D3 SUS 316, Double flated	H High flat ** F Flat M Concave	N Without LED E Illuminated ring ***	00 No 00 Without LED 3C RGB		
			B4 5-24VADC / 1A						

Available with TZ16 model only

D301 26AWG 150mm+2.54 1x2 Connector (std)
D302 26AWG 300mm+2.54 1x2 Connector

Available with TZ19 / TZ22 model only

D101 26AWG 150mm+2.54 1x6 Connector (std)
D102 26AWG 300mm+2.54 1x6 Connector

Note: Please consult sales for additional wire options.

** For model type TZ16 only

*** For model type TZ19 and TZ22 only

EXAMPLE:

PTZ-16N-B4-□HN00-00D301(STD)

Body options

PTZ-19N-B4-□FE00-3CD101(STD)

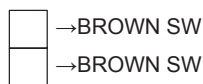
Body options



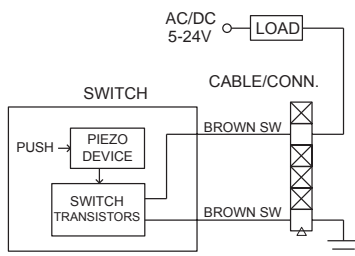
▼ CIRCUIT

00 Without LED application diagram

Available with PTZ-16 model only

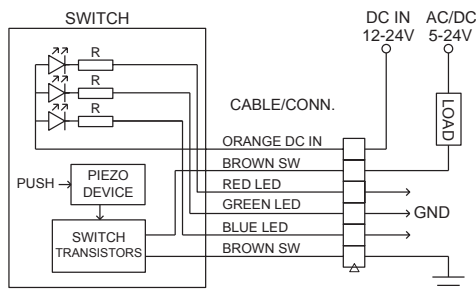


Available with PTZ-19 and PTZ-22 model only



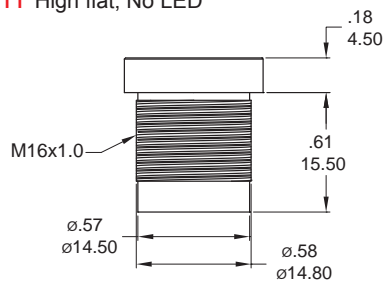
3C RGB LED application diagram

Available with PTZ-19 and PTZ-22 model only



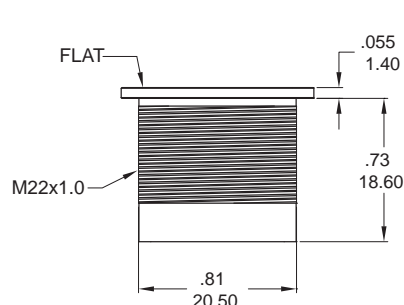
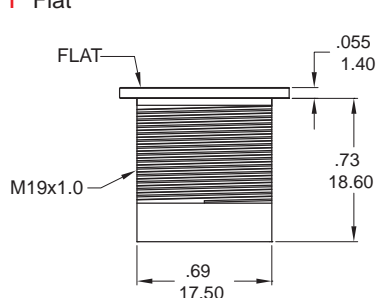
▼ BUTTON OPTIONS

H High flat, No LED

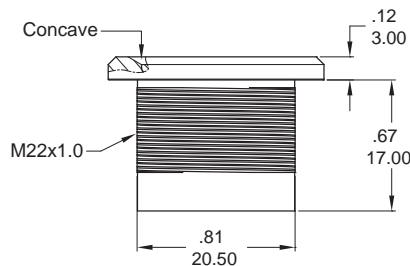
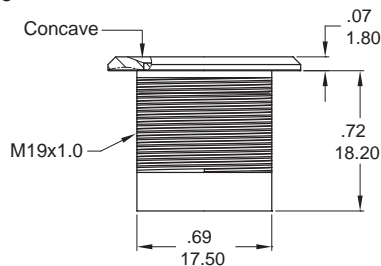


Available with PTZ16 model only

F Flat

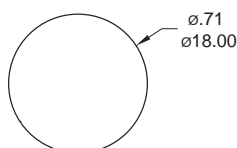


M Concave

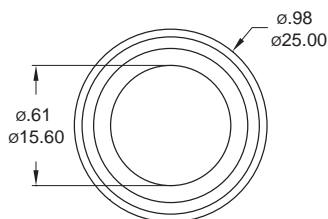


▼ LIGHT OPTIONS

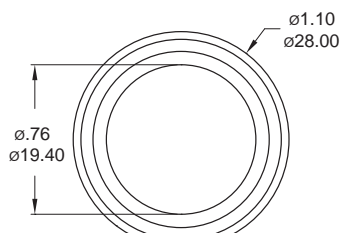
N Without LED



PTZ-16

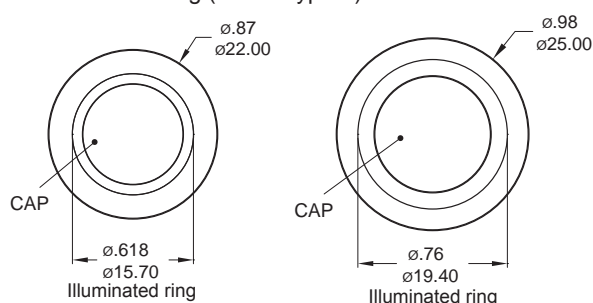


PTZ-19



PTZ-22

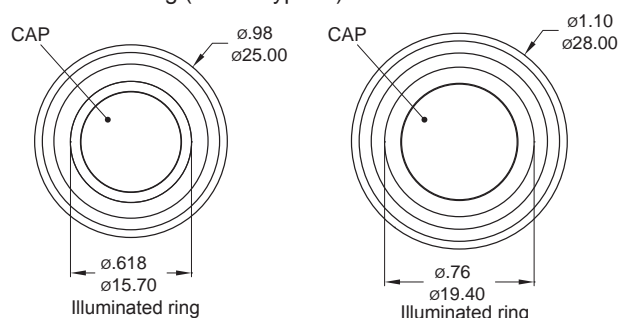
E Illuminated ring (Button type F)



PTZ-19

PTZ-22

E Illuminated ring (Button type M)



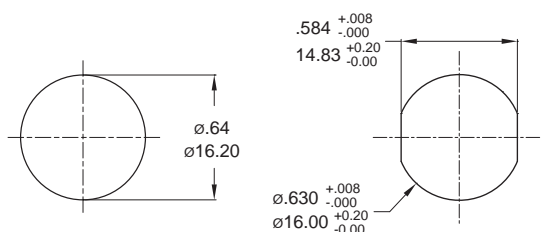
PTZ-19

PTZ-22



▼ PANEL MOUNTING

16mm Bushing

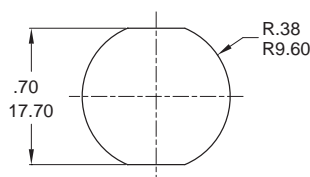


Non-flat

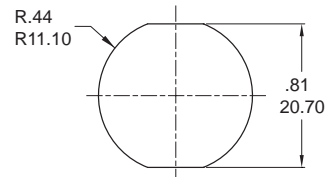
Double flated

Panel thickness: .31inch(8.0mm) Max.

19mm Bushing



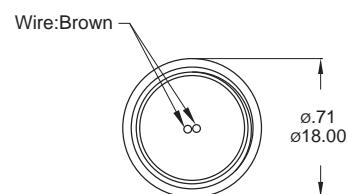
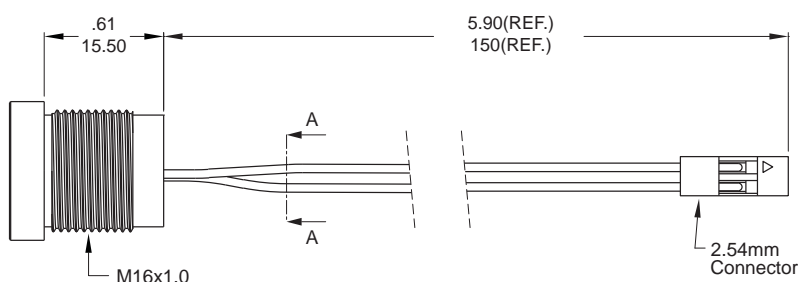
22mm Bushing



Panel thickness: .394inch(10.0mm) Max.

▼ WIRE

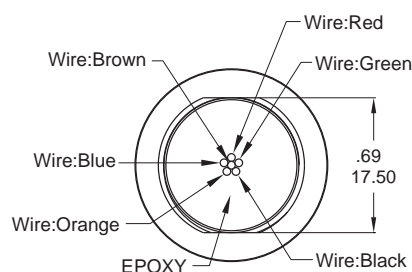
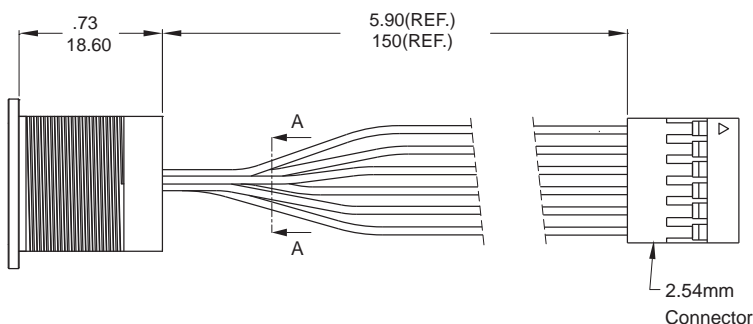
PTZ-16 Wire leads 26 AWG



Section drawing for A-A.

Model name. PTZ-16N-B4-C1HN00-00D301

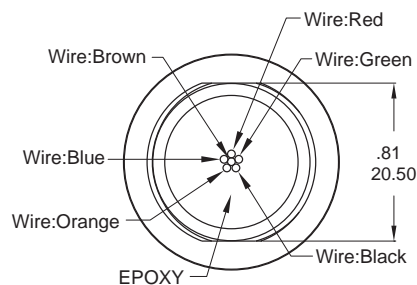
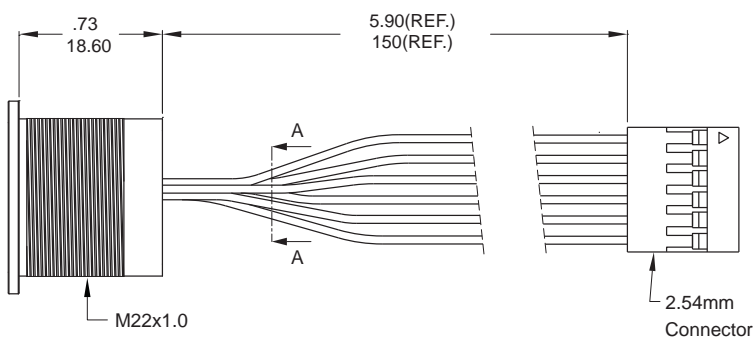
PTZ-19 Wire leads 26 AWG



Section drawing for A-A.

Model name. PTZ-19N-B4-F1FE00-3CD101

PTZ-22 Wire leads 26 AWG



Section drawing for A-A.

Model name. PTZ-22N-B4-F1FE00-3CD101