

※ **2018 Available**



SPECIFICATIONS

RATING : 5-24VADC/1A

OPERATING LIFE : 10MILLION CYCLE MIN.

CONTACT RESISTANCE : 1Ω MAX.

OPERATING TEMPERATURE: -20°C to 65°C.

MATERIALS

BUSHING: Aluminum alloy.

CAP : PC ; Aluminum alloy.

SEALING : Silicone,EPOXY.

O-RING: Silicone.

HEX NUT : Nickel plated brass.

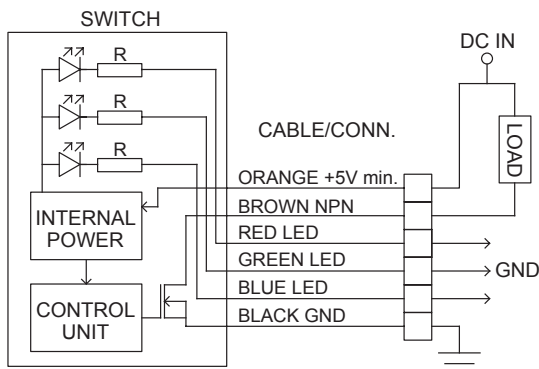
HOW TO ORDER

MODEL NO.	BUSHING	CONTACT CONFIGURATION	RATING	BODY TYPE	BUTTON TYPE	LIGHT TYPE	CAP MARKING	LED COLOR	WIRE						
PTC															
	Bushing 16 16mm 19 19mm 22 22mm	Contact Configuration L Lock M Momentary	Rating A1 5-24VDC / 1A	Body type F1 Al alloy,Double flated (Natural anodized)	Button type F Flat	Light type G Illuminated ring with power logo B Illuminated ring	Cap marking 00 No	LED Color <table><tr><th>ITEM NO</th><th>COLOR</th></tr><tr><td>3C</td><td>RGB</td></tr><tr><td>L3</td><td>Red lock</td></tr></table>	ITEM NO	COLOR	3C	RGB	L3	Red lock	Wire D101 26AWG 150mm+2.54 Connector D102 26AWG 300mm+2.54 Connector
ITEM NO	COLOR														
3C	RGB														
L3	Red lock														

CIRCUIT

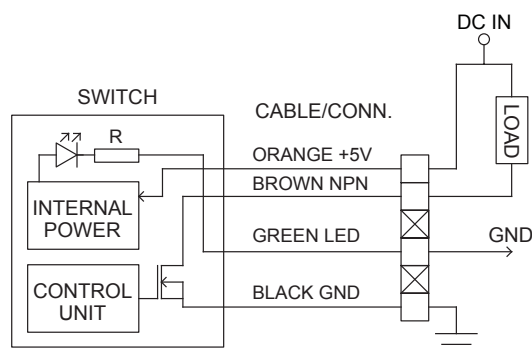
RGB Color LED

Application diagram



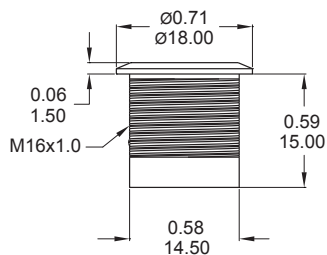
L3 Color LED

Application diagram

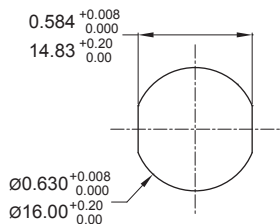


BUSHING

16mm

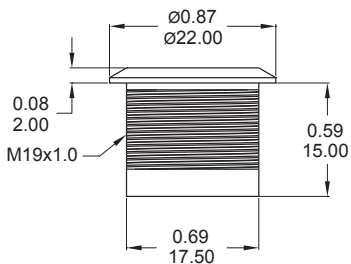


PANEL CUTOUT

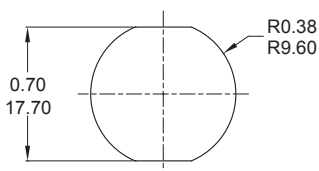


MAX.PANEL THICKNESS:0.8mm[0.315](Max.)

19mm

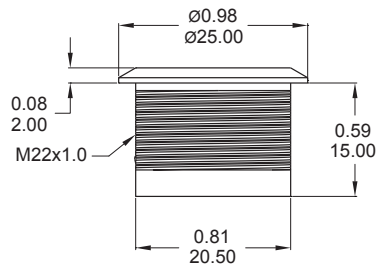


PANEL CUTOUT

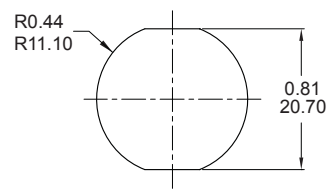


MAX.PANEL THICKNESS:10.0mm[0.394]

22mm



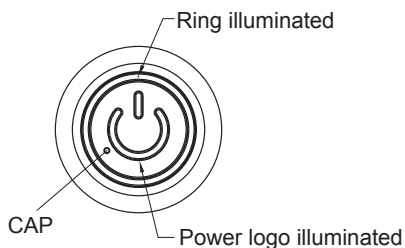
PANEL CUTOUT



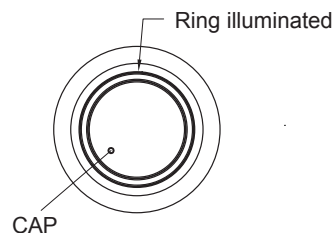
MAX.PANEL THICKNESS:10.0mm[0.394]

LIGHT TYPE

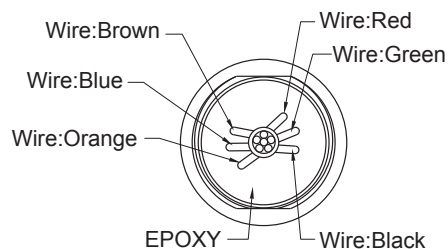
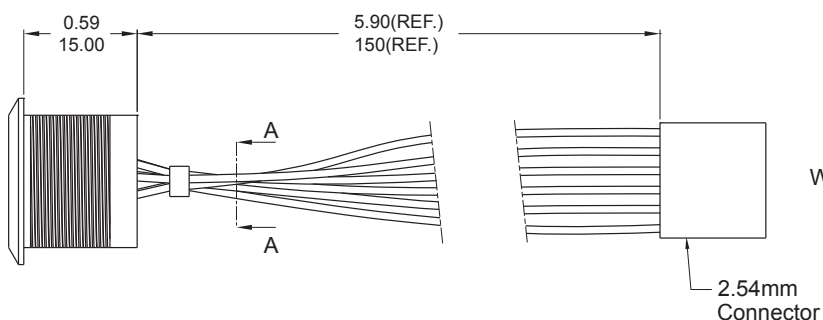
G Power logo+Ring



B Ring



WIRE



SECTION A-A

Part No. Shown : PTC□□□-A1-F1FB-00-3C-D101