



# PW22 Series

22mm High Current Metal Pushbutton Switches



## SPECIFICATIONS

**RATING** : 16A, 26A 250/125VAC.

**CONTACT RESISTANCE** : 50 mΩ max. @ 1A 12VDC (initial value)

**INSULATION RESISTANCE** : 100 MΩ min. at 500VDC

**DIELECTRIC STRENGTH** : 1,500V RMS @ sea level (initial value)

**OPERATION TEMPERATURE** : -25°C to 85°C

**MECHANICAL LIFE** : Momentary 1,000,000 cycles  
Latching 500,000 cycles

**ELECTRICAL LIFE** : 16A /125&250VAC 50,000 cycles  
26A /125&250VAC 10,000 cycles

**OPERATION PRESSURE** : 3.5±1.5N

**TRAVEL** : About 3.2mm

**INGRESS PROTECTION** : IP67(In house test), IK08(Stainless)

**TORQUE** : 1~3Nm.

## MATERIALS

**BUSHING** : Stainless Steel / Aluminum alloy

**BASE** : PBT(UL 94-V0) , PC(UL 94-V2)

**ACTUATOR** : PC ; Stainless Steel / Aluminum alloy

**INNER ASSEMBLY** : POM / PA66.

**SPRING** : Steel.

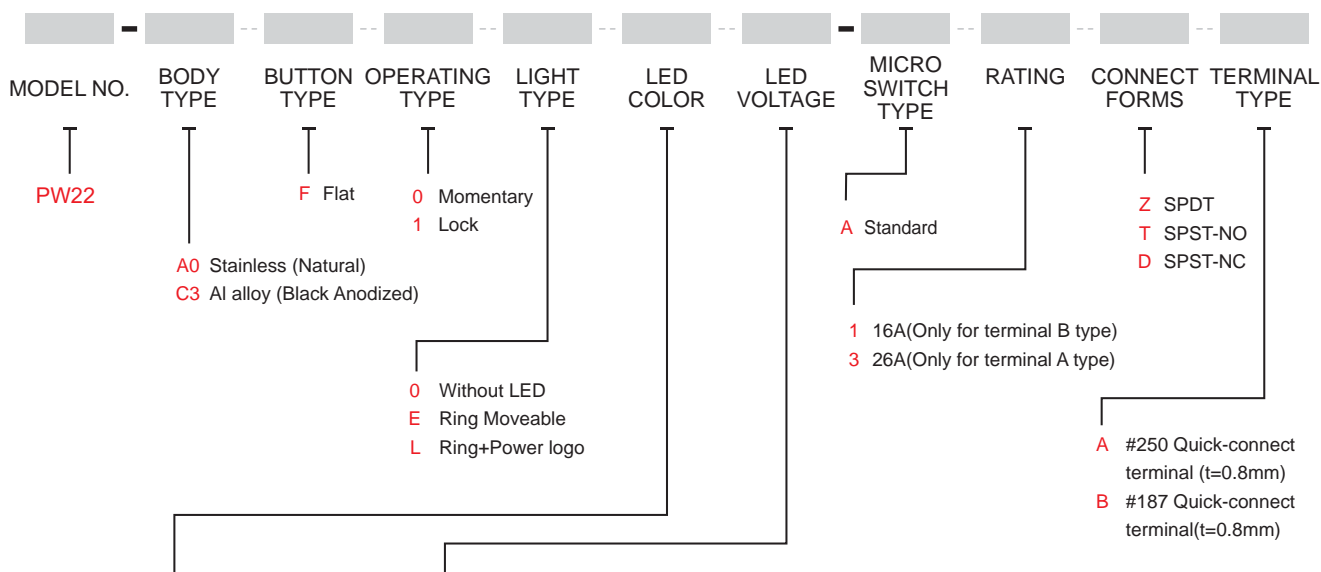
**SEALING** : Silicone.

**O-Ring** : Silicone.

**TERMINAL** : Brass, Silver plated.

**HEX NUT** : Nickel plated brass.

## HOW TO ORDER



ITEM NO	COLOR
Single Color LED	
0	Without LED
1	White
3	Red
5	Yellow
6	Green
7	Blue
Dual Color LED	
A	Red+Green
B	Red+Blue

\*

LED Voltage (20mA)

ITEM NO	VOLTAGE
0	Without Resistor
3	3V
6	6V
12	12V
24	24V
36	36V
110	110V
220	220V

\* Except standard color, for other colors information please consult sales representativity.

EXAMPLE:

PW22-A0F0E □ □ -A1 □ B

Connect forms option  
LED voltage  
LED color

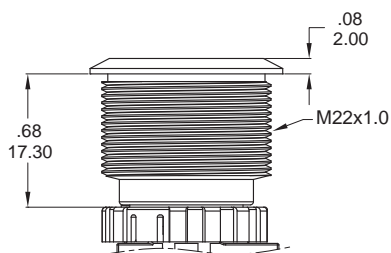
PW22-A0F0E □ □ -A3 □ A

Connect forms option  
LED voltage  
LED color



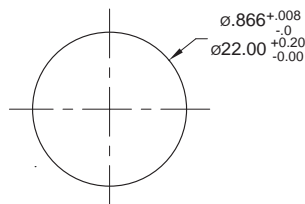
## ▼ BODY OPTIONS

A0 / C3



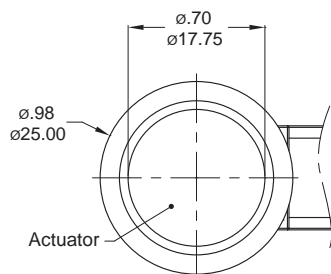
### PANEL MOUNTING

Max. Panel thickness: .394inch(10.0mm)

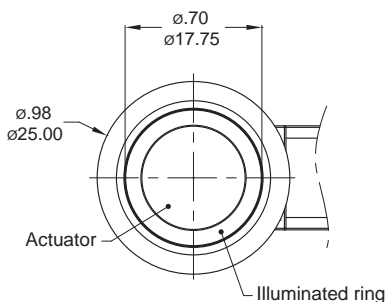


## ▼ LIGHT OPTIONS

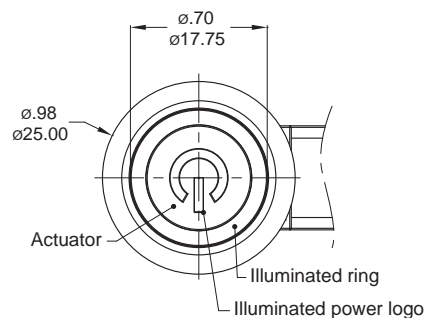
0 Without LED



E Ring Moveable



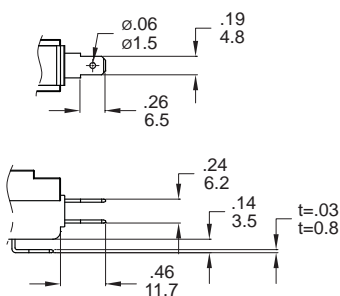
L Ring+Power logo



## ▼ TERMINAL OPTIONS

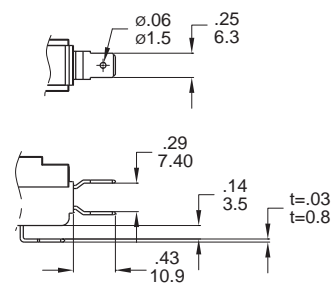
#187 Only 16A

Quick-connect terminal (t=0.3inch(0.8mm))



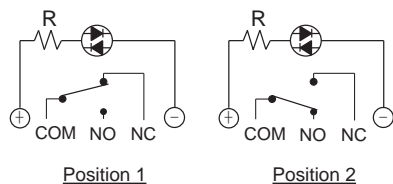
#250 Only 26A

Quick-connect terminal (t=0.3inch(0.8mm))

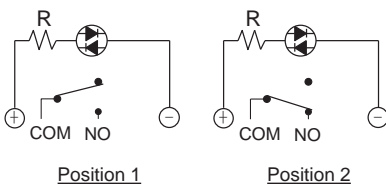


## ▼ CIRCUIT

SPDT



SPST-NO



SPST-NC

