



SPECIFICATIONS

RATING : 16A, 26A 250/125VAC.

CONTACT RESISTANCE : 50 mΩ max. @ 1A 12VDC (initial value)

INSULATION RESISTANCE : 100 MΩ min. at 500VDC

DIELECTRIC STRENGTH : 1,500V RMS @ sea level (initial value)

OPERATION TEMPERATURE : -25°C to 85°C

MECHANICAL LIFE : Momentary 1,000,000 cycles

Latching 500,000 cycles

ELECTRICAL LIFE : 16A /125 & 250VAC 50,000 cycles

26A /125 & 250VAC 10,000 cycles

OPERATION PRESSURE : 3.5±1.5N

TRAVEL : About 3.2mm

INGRESS PROTECTION : IP67(In house test), IK08(Stainless)

TORQUE : 1~3Nm.

MATERIALS

BUSHING : Stainless Steel / Aluminum alloy

BASE : PBT(UL 94-V0) , PC(UL 94-V2)

ACTUATOR : PC ; Stainless Steel / Aluminum alloy

INNER ASSEMBLY : POM / PA66.

SPRING : Steel.

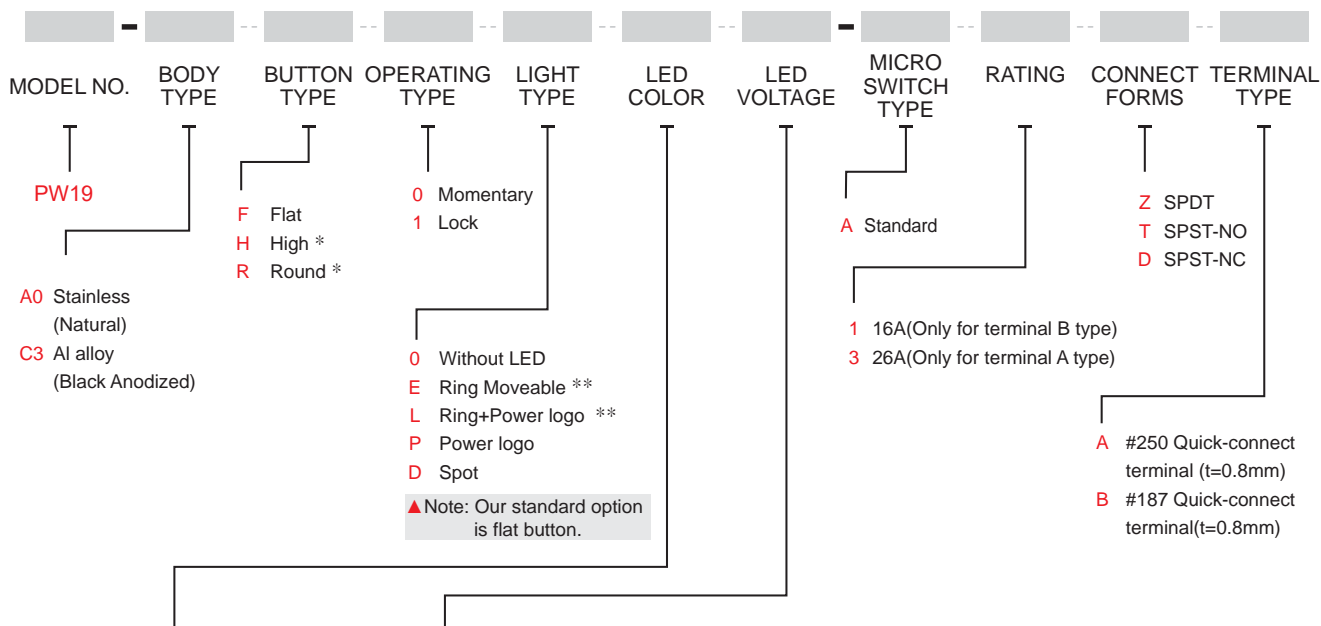
SEALING : Silicone.

O-Ring : Silicone.

TERMINAL: Brass, Silver plated.

HEX NUT : Nickel plated brass.

HOW TO ORDER



| ITEM NO | COLOR |
|------------------|-------------|
| Single Color LED | |
| 0 | Without LED |
| 1 | White |
| 3 | Red |
| 5 | Yellow |
| 6 | Green |
| 7 | Blue |
| Dual Color LED | |
| A | Red+Green |
| B | Red+Blue |

LED Voltage (20mA)

| ITEM NO | VOLTAGE |
|---------|------------------|
| 0 | Without Resistor |
| 3 | 3V |
| 6 | 6V |
| 12 | 12V |
| 24 | 24V |
| 36 | 36V |
| 110 | 110V |
| 220 | 220V |

* Standard is without LED and only available with A0 body type.
** For button type F only.
*** Except standard color, for other colors information please consult sales representativity.

EXAMPLE:

PW19-A0F0E □ □ -A1 □ B
Connect forms option
LED voltage
LED color

PW19-A0F0E □ □ -A3 □ A
Connect forms option
LED voltage
LED color



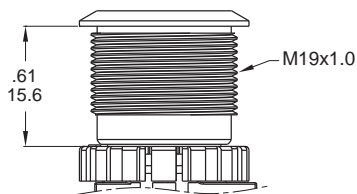
PW19 Series

19mm High Current Metal Pushbutton Switches



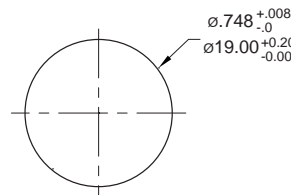
▼ BODY OPTIONS

A0 / C3



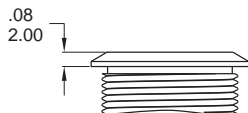
PANEL MOUNTING

Max. Panel thickness: .394inch(10.0mm)

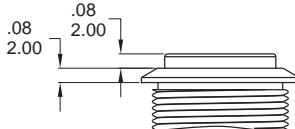


▼ BUTTON OPTIONS

F Flat (std)

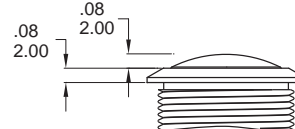


H High, No LED



Standard for A0 body type .

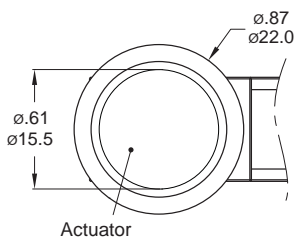
R Round, No LED



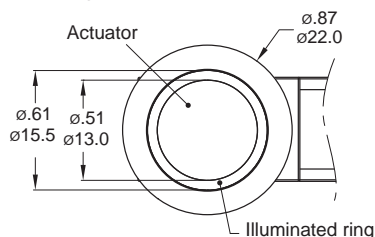
Standard for A0 body type .

▼ LIGHT OPTIONS

O Without LED

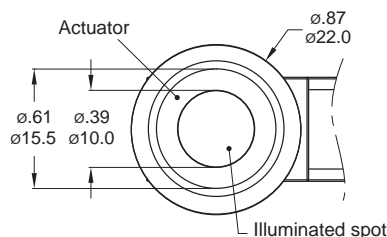


E Ring Moveable

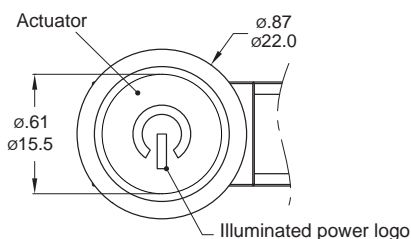


Available with flat button only.

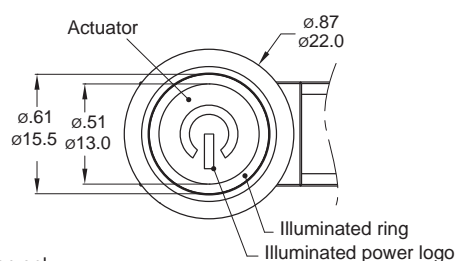
D Spot



P Power logo *



L Ring+Power logo *

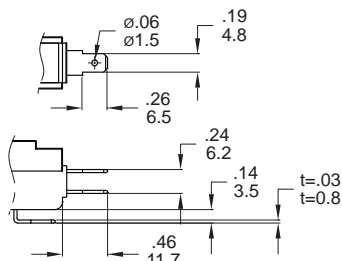


* Available with flat button only.

▼ TERMINAL OPTIONS

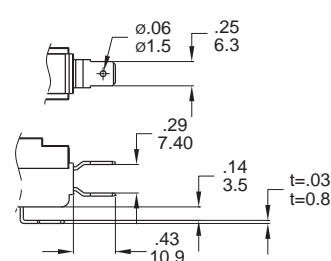
#187 Only 16A

Quick-connect terminal(t=0.3inch(0.8mm))



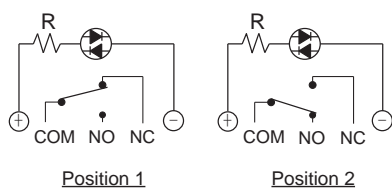
#250 Only 26A

Quick-connect terminal(t=0.3inch(0.8mm))

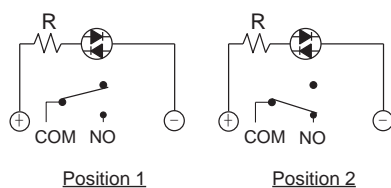


▼ CIRCUIT

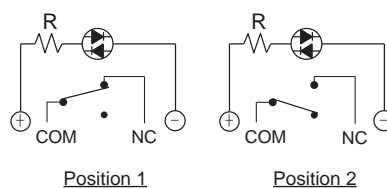
SPDT



SPST-NO



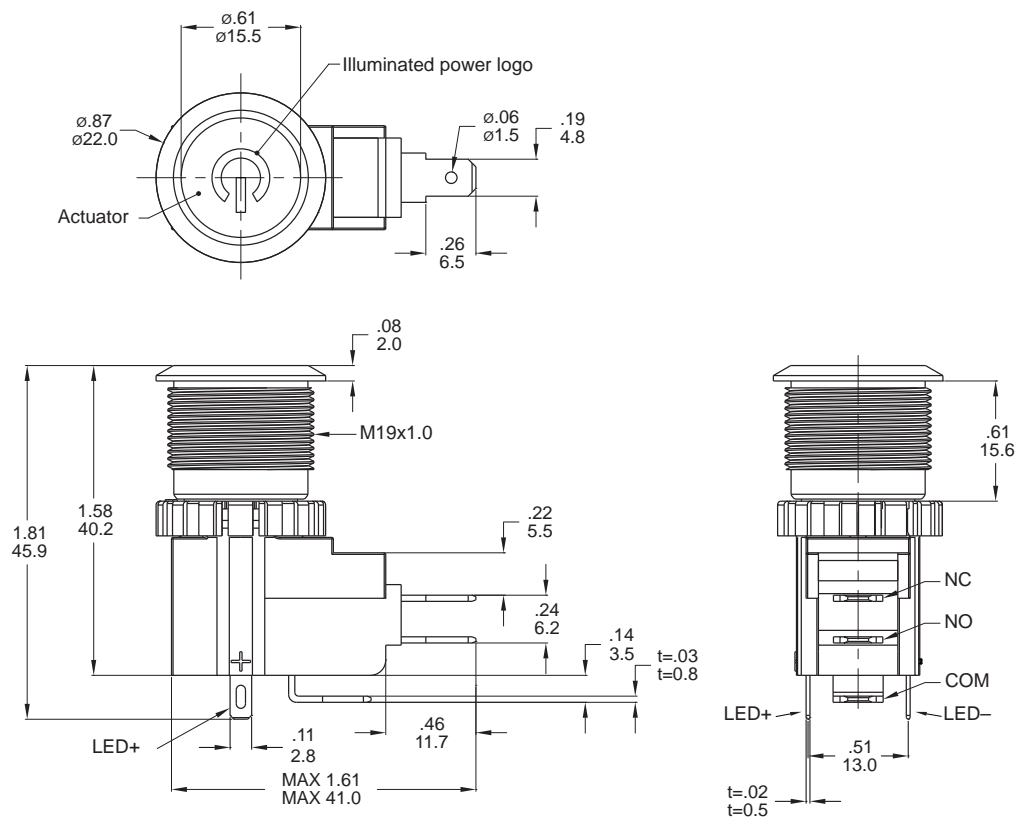
SPST-NC





▼ DIMENSION

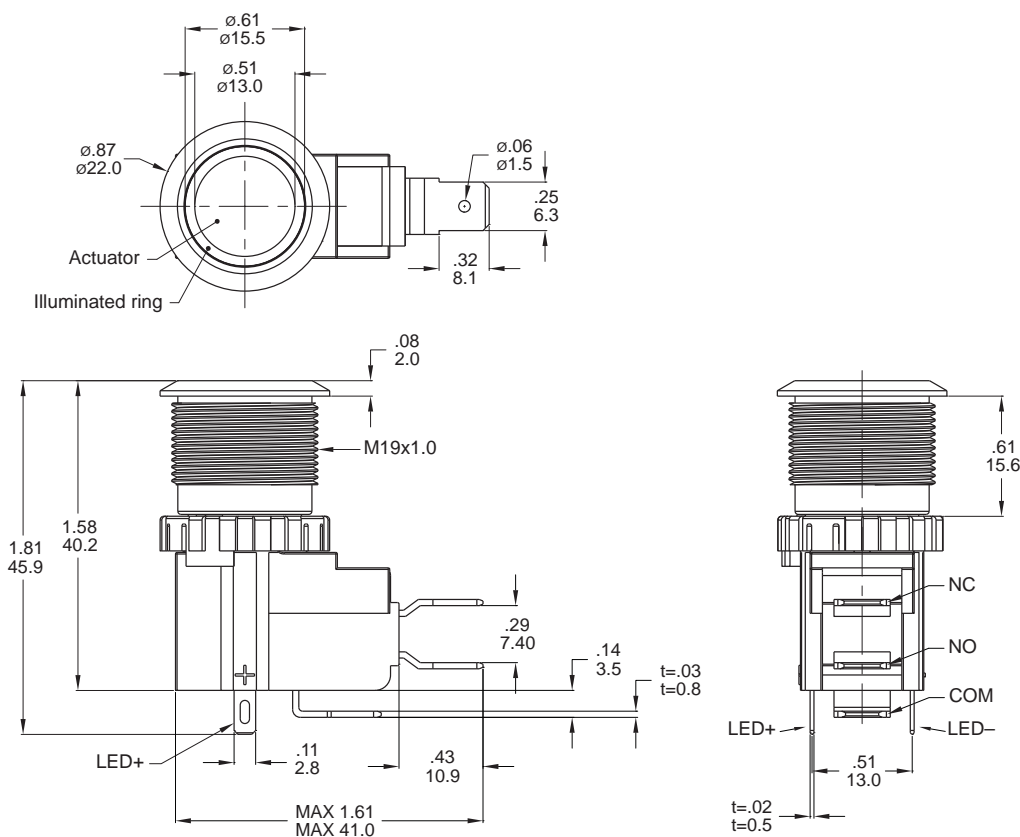
16A



SPDT

Model name. PW19-A0F0P312-A1ZB

26A



SPDT

Model name. PW19-A0F0E112-A3ZA