





▼ CIRCUIT

SINGLE POLE

Without LED

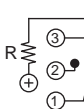


Position 1

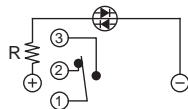


Position 2

Single Color LED

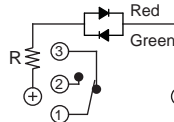


Position 1

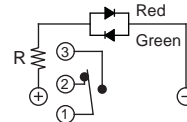


Position 2

Dual Color LED

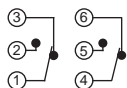


Position 1

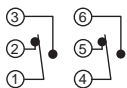


Position 2

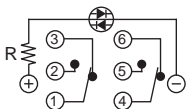
DOUBLE POLE



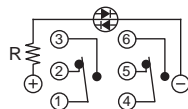
Position 1



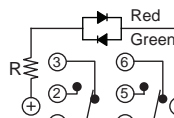
Position 2



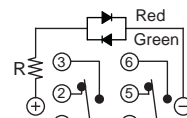
Position 1



Position 2



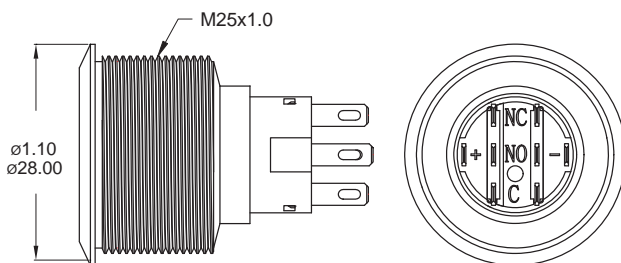
Position 1



Position 2

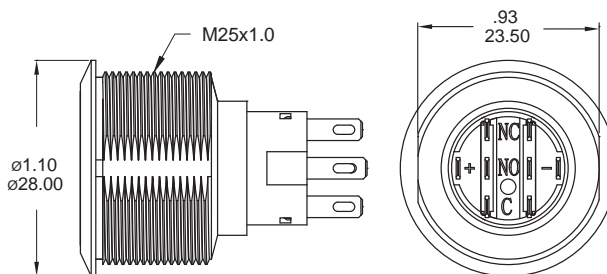
▼ BODY OPTIONS

A0 / C3 Round



Not available for light type E1 and E3.

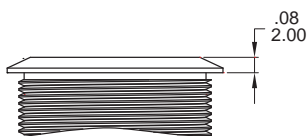
D0 / F3 Double flat



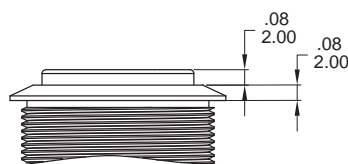
Available with light type E1 and E3 only.

▼ BUTTON OPTIONS

F Flat (std)



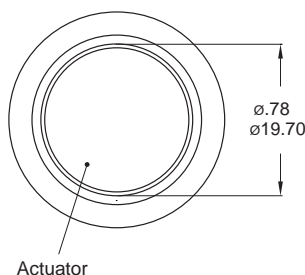
H High, No LED



Only available for aluminum body options.

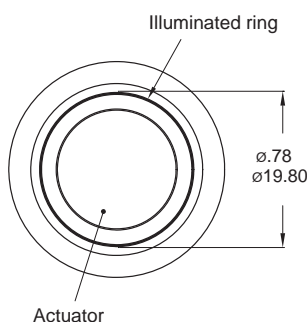
▼ LIGHT OPTIONS

0 Without LED

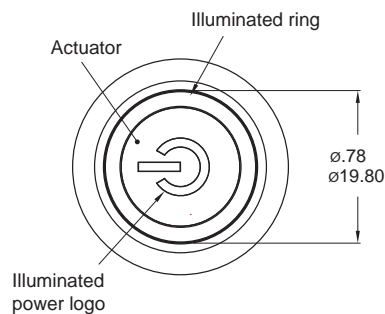


Available with button type H only.

E / E2 Ring (Moveable)



E1 / E3 Ring (Moveable)+Power logo

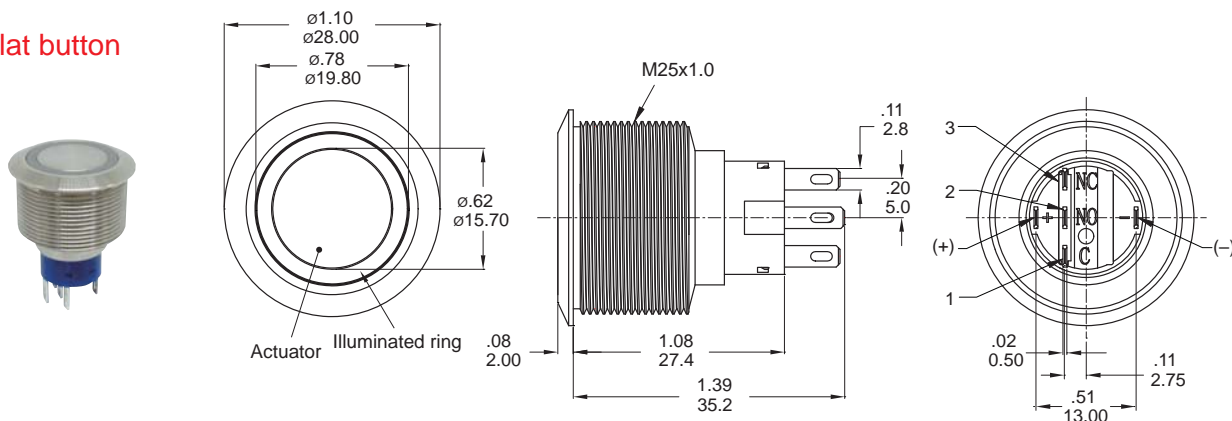


Available with body type D0 only.

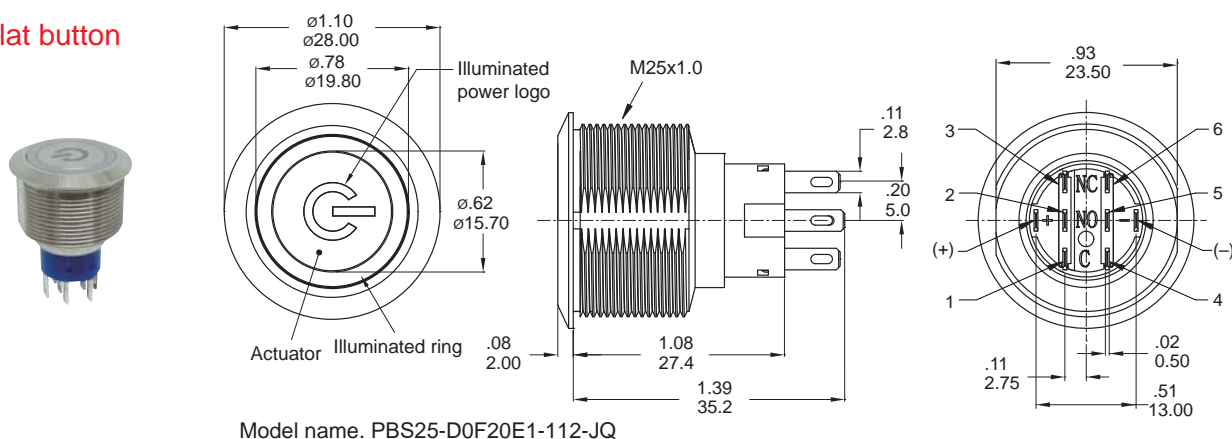


▼ DIMENSION

Flat button

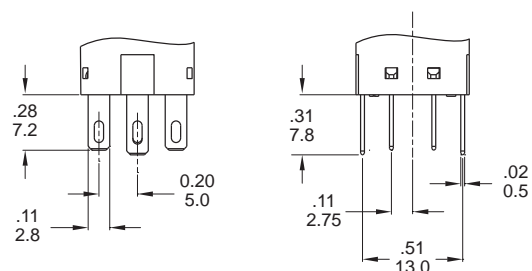


Flat button

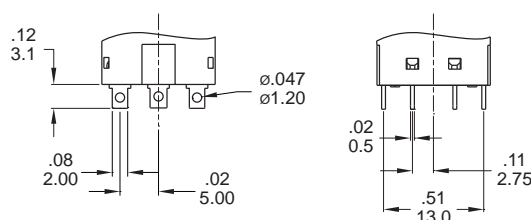


▼ TERMINAL OPTIONS

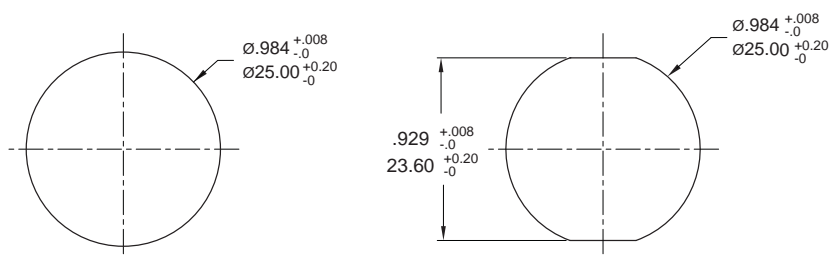
J Solder terminal (std)



S Short solder terminal



▼ PANEL MOUNTING



Panel thickness:
.394inch(10.0 mm) MAX.



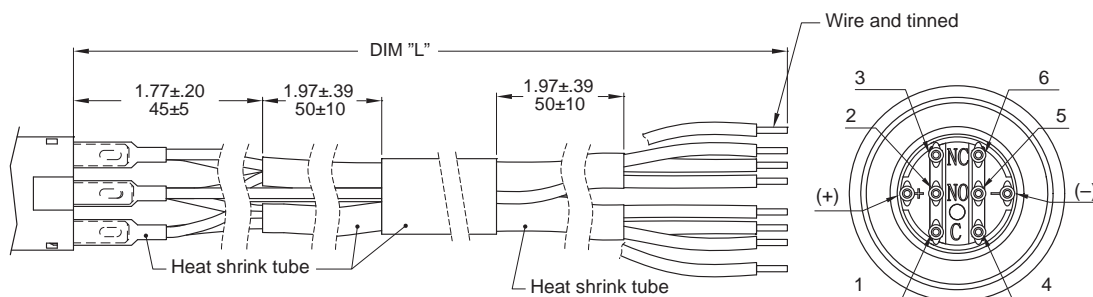
▼ WIRE OPTIONS

TX Wire leads UL3385 18 AWG (Flying lead Terminal)

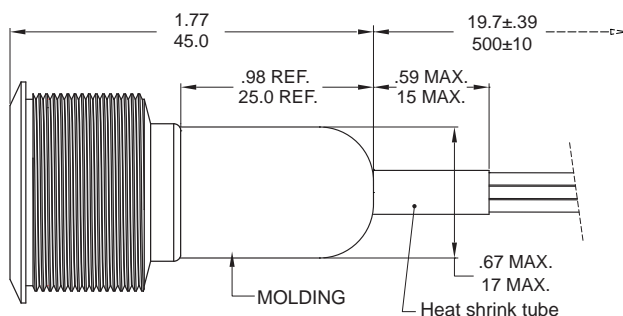
Wires

CODE	DIM "L"
T1	500
T2	1000
T3	1500
T4	2000

Units: mm



D1 Molding, 500mm wire leads UL3385 18 AWG



Wires:

Yellow wire - Terminal 1 and 4
Purple wire - Terminal 2 and 5
Green wire - Terminal 3 and 6
Red wire - LED (+) Positive
Black wire - LED (-) Negative

* Please consult sales for additional wire options.

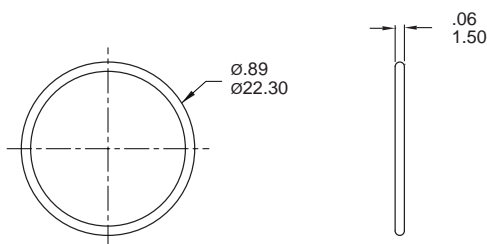
▼ HARDWARE

* Standard hardware : 1 nut, 1 O-ring

* For further information please consult sales representativity.

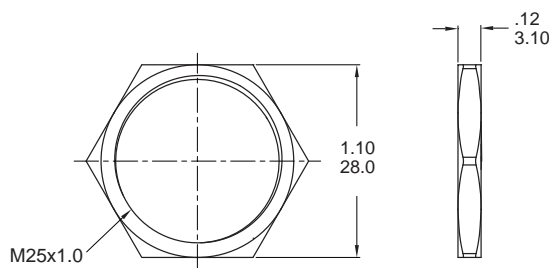
O-RING (Std.)

Model name. FCP-MPB25



NUT (Std.)

Model name. MNU-MPB03



▼ O-RING INSTALLATION

Proposal	In front of the panel	Behind the panel
Installation Diagram	<p>Diagram showing the O-RING installed in front of the panel, with a red dashed arrow pointing to the O-RING.</p>	<p>Diagram showing the O-RING installed behind the panel, with a red dashed arrow pointing to the O-RING.</p>