



RATING : 1th 5A/250VAC resistive load 3A/250VAC

CONTACT RESISTANCE : 50 mΩ max. @ 1A 12VDC (initial value)

INSULATION RESISTANCE : 1,000 MΩ min. at 500VDC

DIELECTRIC STRENGTH : 2,000V RMS @ sea level

OPERATION TEMPERATURE : -20°C to 55°C

MECHANICAL LIFE : Momentary 1,000,000 cycles

Self-lock 500,000 cycles

ELECTRICAL LIFE : 50.000 make-and-break cycles at full load

TORQUE : 5~14Nm

OPERATION PRESSURE : 1Pole 2.5±1N / 2Poles 3.5±1N

TRAVEL : About 3.2mm

INGRESS PROTECTION : IP67, IK10(Stainless)

MATERIALS

BUSHING : Stainless Steel / Aluminum alloy

BASE : PBT(UL 94-V0) , PC(UL 94-V2)

ACTUATOR : PC: Stainless Steel / Aluminum alloy

INNER ASSEMBLY : POM / PA66.

SPRING : Spring steel.

SEALING : Silicone.

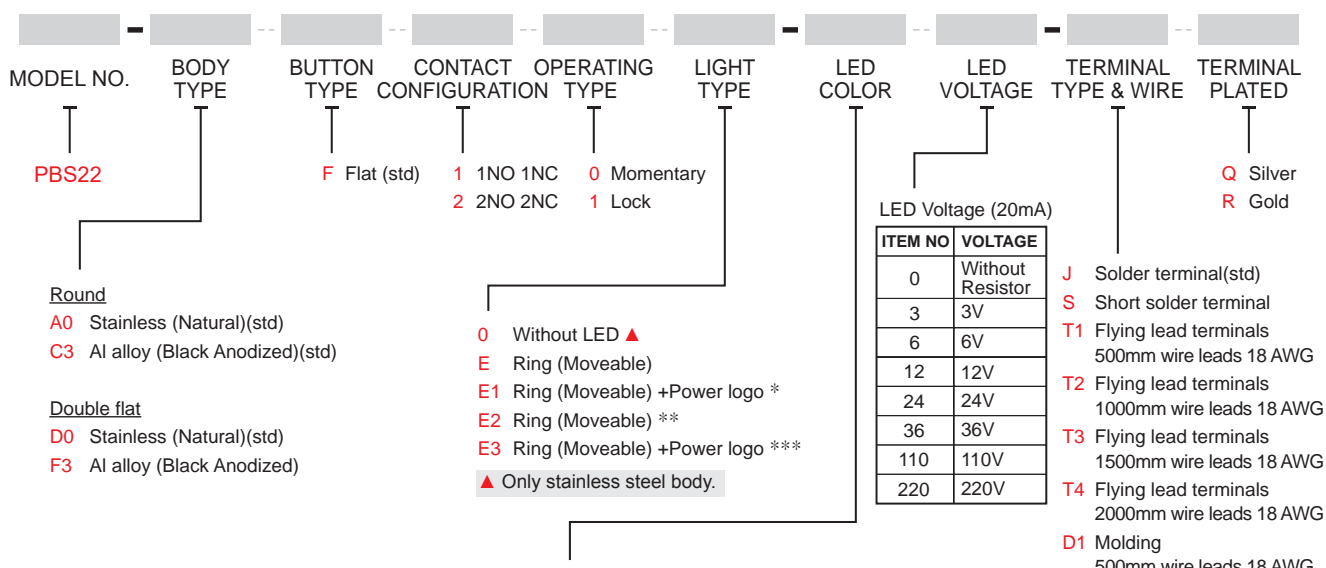
O-Ring : Silicone.

TERMINAL : Brass, with silver or gold plated.

CONTACT : Brass, coin silver, with silver or gold plated

HEX NUT : Nickel plated brass

HOW TO ORDER



ITEM NO	COLOR
Single Color LED	
0	Without LED
1	White
3	Red
5	Yellow
6	Green
7	Blue
Dual Color LED	
A	Red+Green
B	Red+Blue
D	Blue+ Yellow
G	Red+Yellow
J	Green+Yellow
H	Orange+Green
P	Blue+Green

- * 1. Light type E1 is only available with D0 body type.
- 2. Only white ring with all led color.

** Light type E2 with LED is only available with color red/green/blue and A0 body type.

*** Light type E3 with LED is only available with color red/green/blue and D0 body type.

**** For other colors information please consult sales representativity.

EXAMPLE:

PBS22-A0F100-JQ (Without LED)

PBS22-A0F10□-□□-JQ

- LED voltage

- LED color

- Light options



▼ CIRCUIT

SINGLE POLE

Without LED

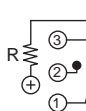


Position 1

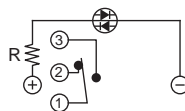


Position 2

Single Color LED

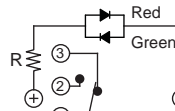


Position 1

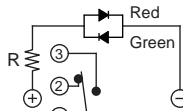


Position 2

Dual Color LED

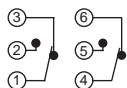


Position 1

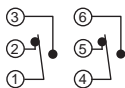


Position 2

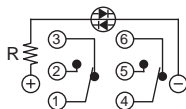
DOUBLE POLE



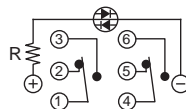
Position 1



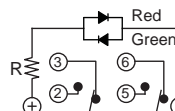
Position 2



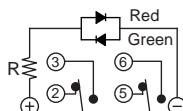
Position 1



Position 2



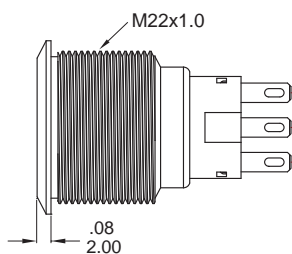
Position 1



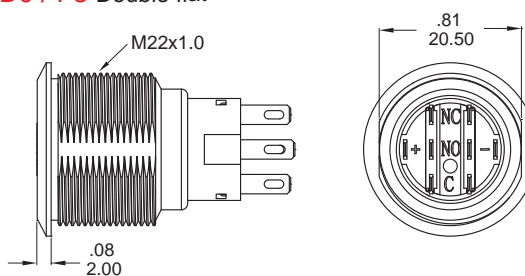
Position 2

▼ BODY OPTIONS

A0 / C3 Round



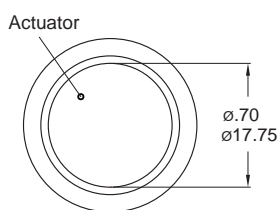
D0 / F3 Double flat



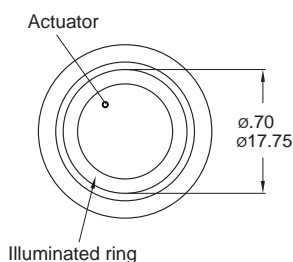
Available with light types E1 and E3 only.

▼ LIGHT OPTIONS

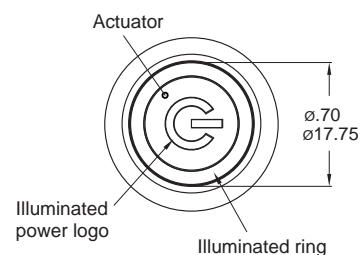
0 Without LED



E / E2 Ring (Moveable)



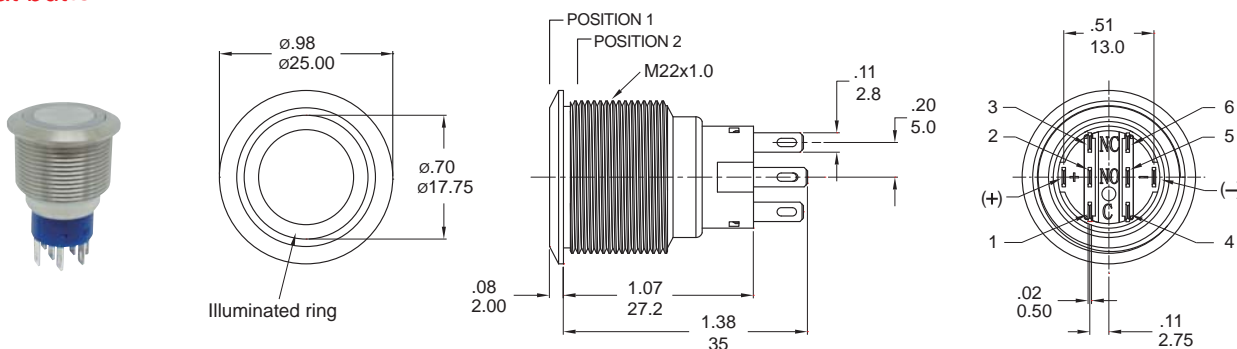
E1 / E3 Ring (Moveable)+Power logo



Available with double flat body type only.

▼ DIMENSION

Flat button



Model name. PBS22-A0F20E-112-JQ



IP 67
ACCORDING TO
EN 60529:1989+A1:2001
IEC 60529:2001

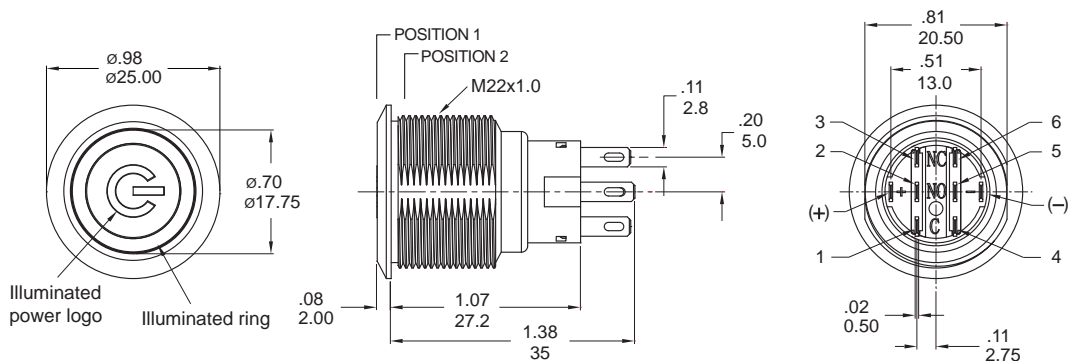


PBS22 Series

22mm Metal Pushbutton Switches



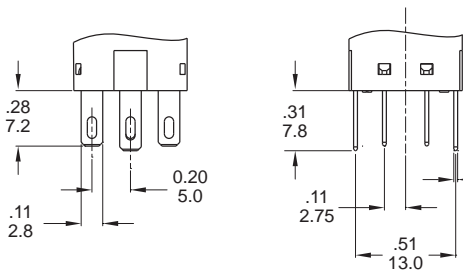
Flat button



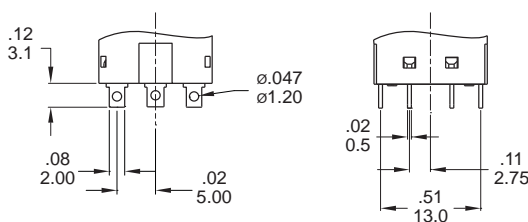
Model name. PBS22-A0F20E1-112-JQ

▼ TERMINAL OPTIONS

J Solder terminal (std)



S Short solder terminal



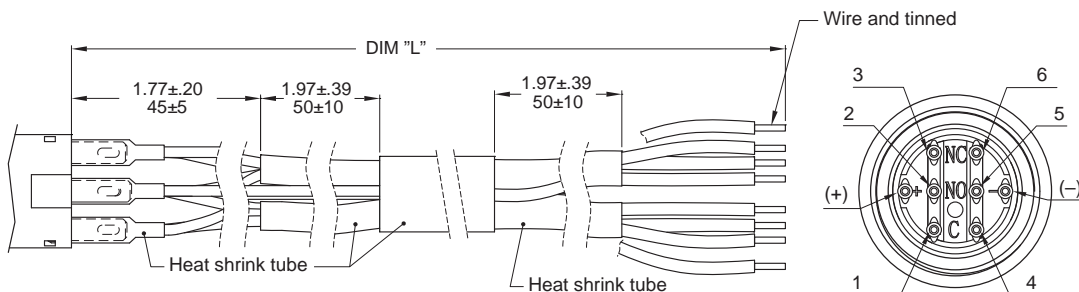
▼ WIRE OPTIONS

TX Wire leads UL3385 18 AWG (Flying lead Terminal)

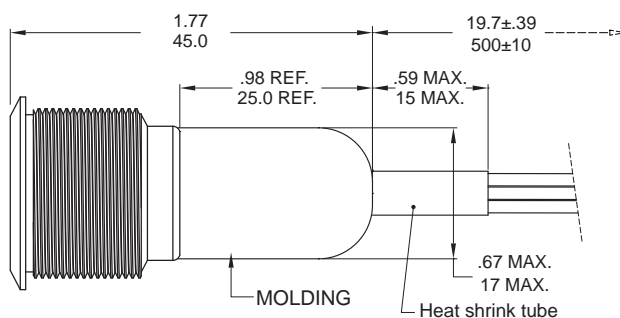
Wires

CODE	DIM "L"
T1	500
T2	1000
T3	1500
T4	2000

Units: mm



D1 Molding, 500mm wire leads UL3385 18 AWG



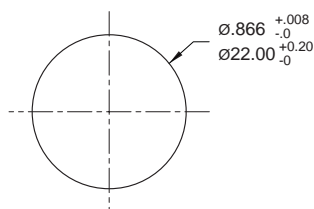
Wires:

Yellow wire - Terminal 1 and 4
Purple wire - Terminal 2 and 5
Green wire - Terminal 3 and 6
Red wire - LED (+) Positive
Black wire - LED (-) Negative

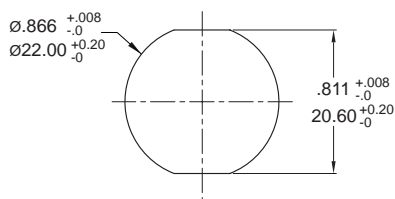
* Please consult sales for additional wire options.



▼ PANEL MOUNTING



Round



Double flat

Panel thickness:
.394inch(10.0 mm) MAX.

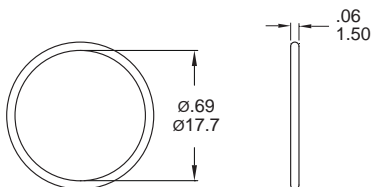
▼ HARDWARE

* Standard hardware : 1 nut, 1 O-ring

* For further information please consult sales representativity.

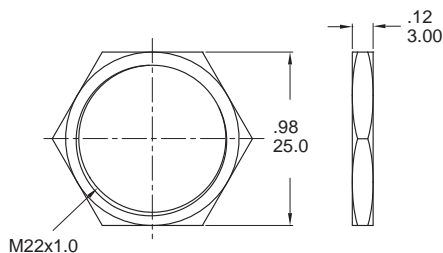
O-RING (Std.)

Model name. FCP-MPB07



NUT (Std.)

Model name. MNU-MPB02



▼ O-RING INSTALLATION

Proposal	In front of the panel	Behind the panel
Installation Diagram		