





▼ CIRCUIT

SINGLE POLE

Without LED

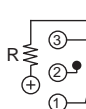


Position 1

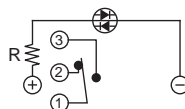


Position 2

Single Color LED

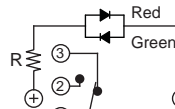


Position 1

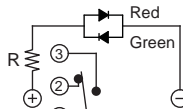


Position 2

Dual Color LED

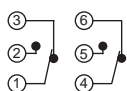


Position 1

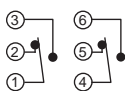


Position 2

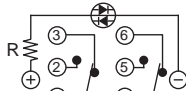
DOUBLE POLE



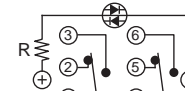
Position 1



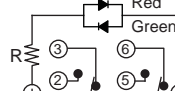
Position 2



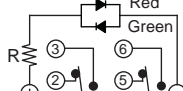
Position 1



Position 2



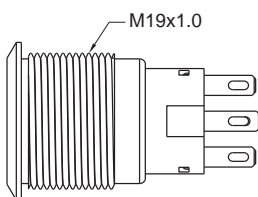
Position 1



Position 2

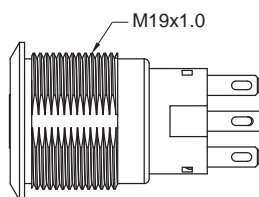
▼ BODY OPTIONS

A0 / B1 / B2 / C3 Round

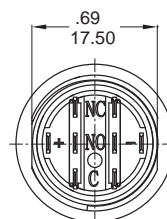


Not available for light type P and E1.

D0 / E1 / E2 / F3 Double flat

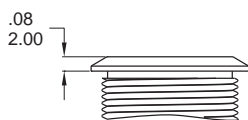


Available with light type P and E1 only.

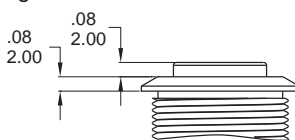


▼ BUTTON OPTIONS

F Flat (std)

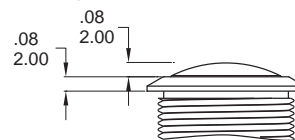


H High



Not available for light type E and E1.

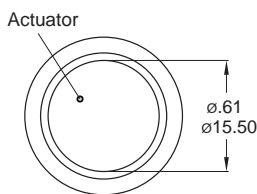
R Round, No LED



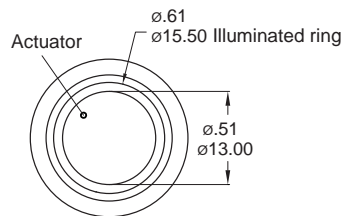
Standard for A0 body type .

▼ LIGHT OPTIONS

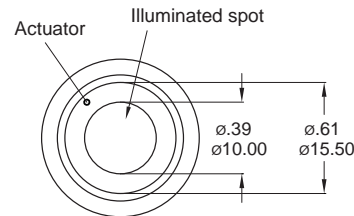
0 Without LED



R Ring (Fixed)

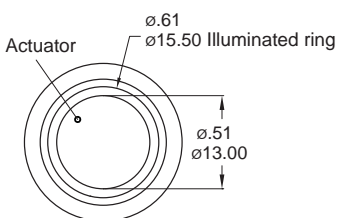


D Spot

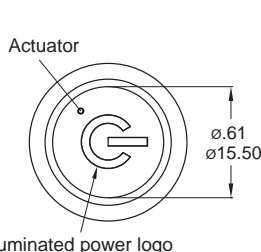


Not available for brass body type.

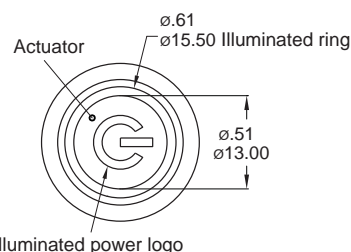
E Ring (Moveable)



P Power logo *



E1 Ring (Moveable)+Power logo *



Available with flat button only.

* Note: Available with double flat body type only.



IP 67
ACCORDING TO
EN 60529:1989+A1:2001
IEC 60529:2001

C US
E 187490

RoHS
compliant

Pb
lead-free

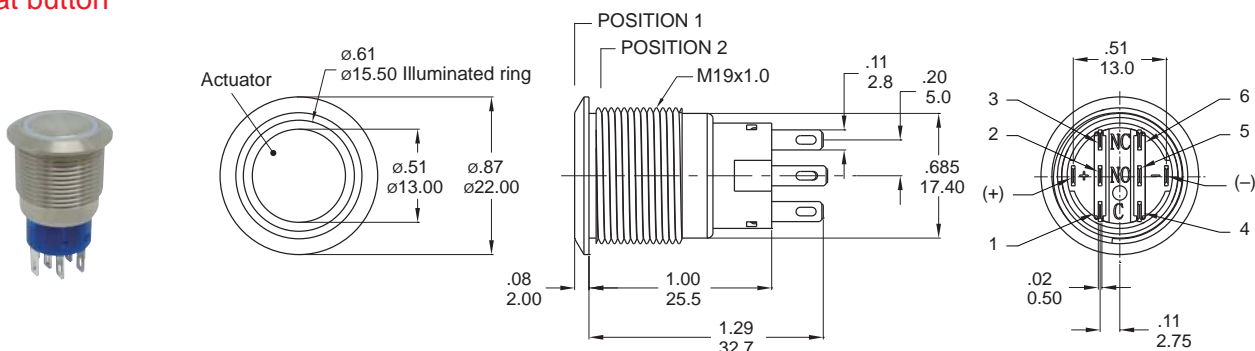
PBS19 Series

19mm Metal Pushbutton Switches



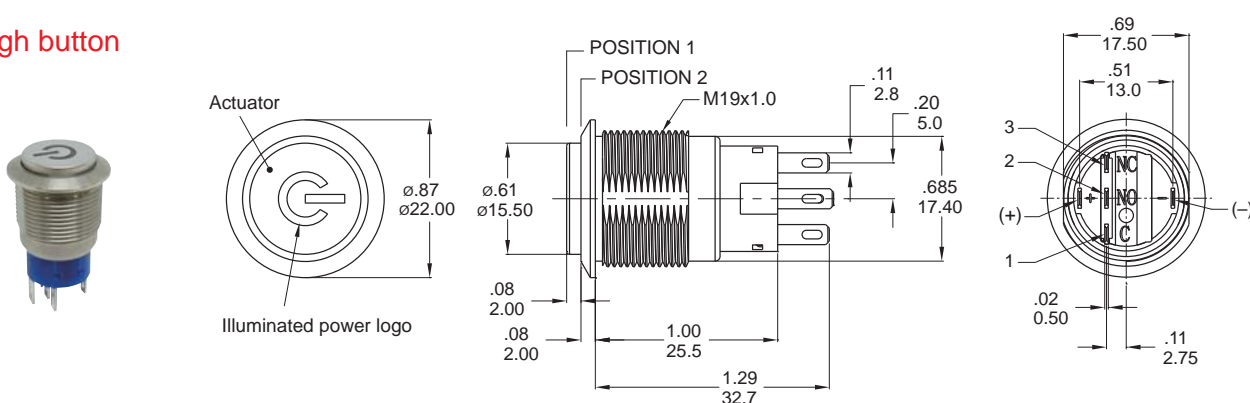
▼ DIMENSION

Flat button



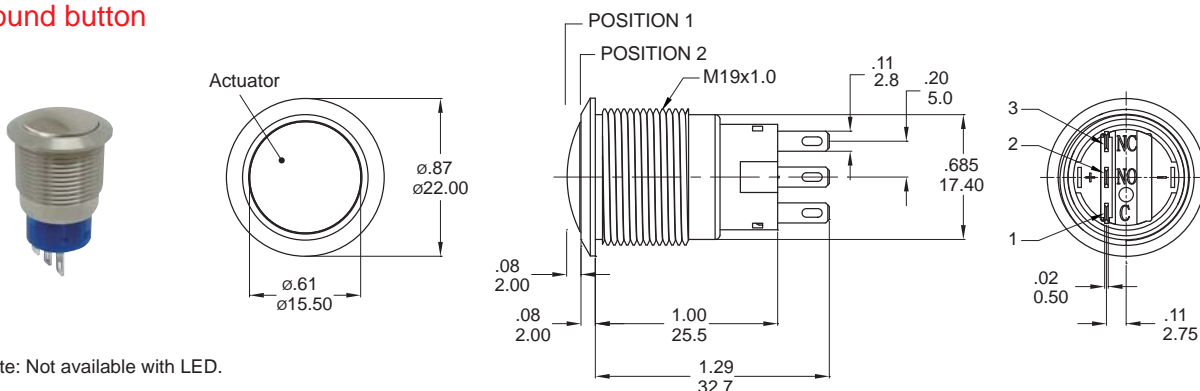
Model name. PBS19-A0F20E-112-JQ

High button



Model name. PBS19-D0H10P-112-JQ

Round button

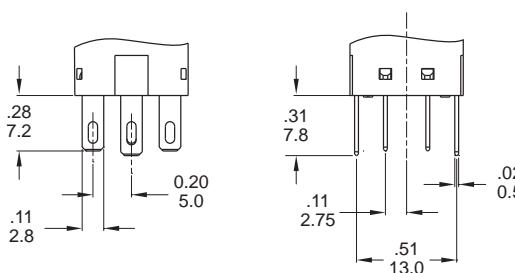


Note: Not available with LED.

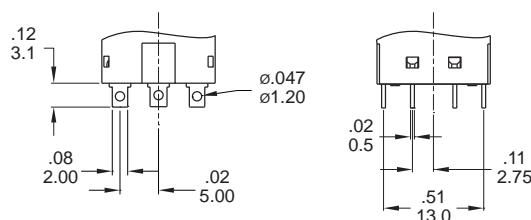
Model name. PBS19-A0R100-JQ

▼ TERMINAL OPTIONS

J Solder terminal (std)



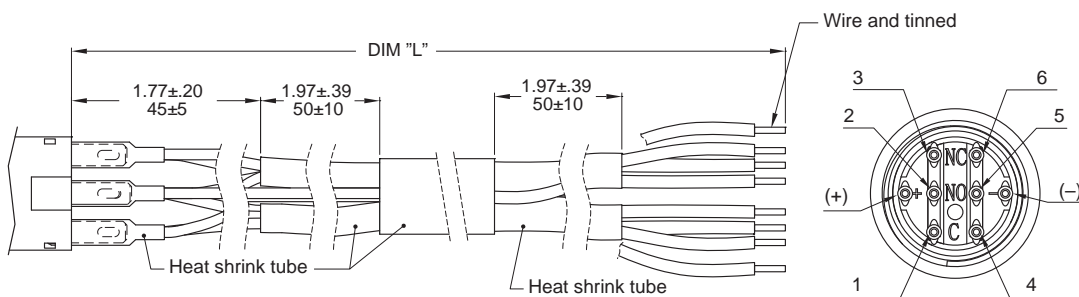
S Short solder terminal





▼ WIRE OPTIONS

TX Wire leads UL3385 18 AWG (Flying lead Terminal)

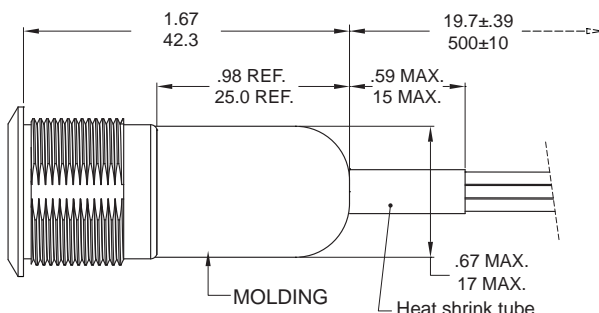


Wires

CODE	DIM "L"
T1	500
T2	1000
T3	1500
T4	2000

Units: mm

D1 Molding, 500mm wire leads UL3385 18 AWG



Wires:

Yellow wire - Terminal 1 and 4

Purple wire - Terminal 2 and 5

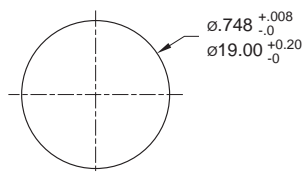
Green wire - Terminal 3 and 6

Red wire - LED (+) Positive

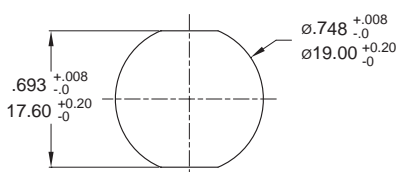
Black wire - LED (-) Negative

* Please consult sales for additional wire options.

▼ PANEL MOUNTING



Round



Double flat

Panel thickness:
.394inch(10.0 mm) MAX.

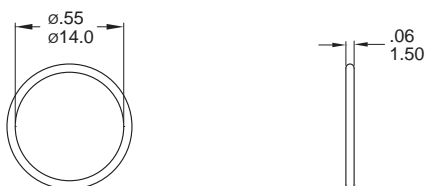
▼ HARDWARE

* Standard hardware : 1 nut, 1 O-ring

* For further information please consult sales representativity.

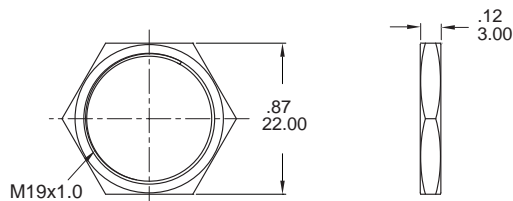
O-RING (Std.)

Model name. FCP-PY02



NUT (Std.)

Model name. MNU-MPB01



▼ O-RING INSTALLATION

Proposal	In front of the panel	Behind the panel
Installation Diagram		