



# PBF16 Series

16mm Metal Pushbutton Switches



## SPECIFICATIONS

**RATING** : 50mA 12VDC.

**OPERATION LIFE** : 500,000 Cycles.

**INSULATION RESISTANCE** : 100 MΩ Min. at 500VDC.

**DIELECTRIC STRENGTH** : 500V RMS @sea level.

**CONTACT RESISTANCE** : 100mΩ Max. @ 1A/12VDC(Initial value)

**OPERATION TEMPERATURE** : -40°C~+85°C

**TRAVEL**: About 3.0±0.3mm.

**OPERATION PRESSURE** : 300gf±150gf.

**INGRESS PROTECTION** : IP67(In house test)

**TORQUE** : 11.5 kgf · cm

## MATERIALS

**BUSHING** : Aluminum alloy, Black.

**BASE** : PA66.

**ACTUATOR** : PC.

**CAP** : PA66, Black.

**SPRING** : Steel.

**O-Ring** : NBR(Black).

**TERMINAL** : Brass, Gold flash plated.

**CONTACT** : Brass, Gold flash plated.

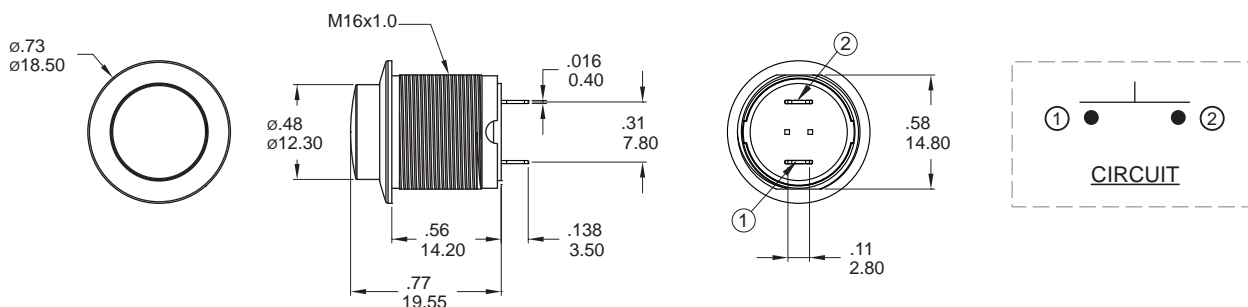
**NUT** : SPCC(Nickel Plated).

## HOW TO ORDER

MODEL NO.	BODY MATERIAL	BODY TYPE	BUTTON TYPE	LED	TERMINAL TYPE	TERMINAL PLATING
PBF16	CD AL alloy Black Anodized	1 Double flat	HR High Round	N Without LED	J Solder terminal	R Gold flash

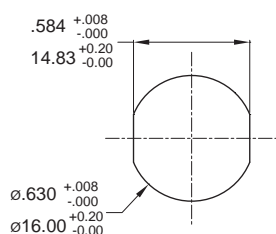
EXAMPLE:  
PBF16-CD1HRN-JR (STD)

## ▼ DIMENSION



Model name. PBF16-CD1HRN-JR

## ▼ PANEL MOUNTING & HARDWARE



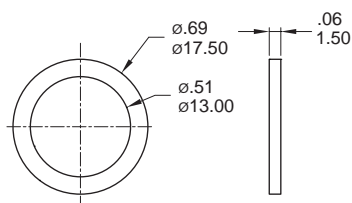
Panel thickness: .315inch(8mm)

\* Standard hardware : 1 nut, 1 O-ring

\* For further information please consult sales representativity.

### O-RING (Std.)

Model name. FCP-MPF602



### NUT (Std.)

Model name. MNU-MP601

