

SPECIFICATIONS

CONTACT RATING: max 0.4 VA max @ 28 VDC

Min. 1 μ A /20 mVDC

LIFE CYCLE: 10,000 make-and-break cycles

CONTACT RESISTANCE: 100 m Ω max. initial @2-4 VDC, 100 mA

INSULATION RESISTANCE: 500 M Ω min.

DIELECTRIC STRENGTH: 250 VAC, 50 Hz for the duration of 1 minute.

OPERATING TEMPERATURE: -20°C to +85°C

MATERIALS

CASE - nylon 4/6

ACTUATOR - nylon

BASE - nylon 4/6

TERMINAL - Copper alloy, gold-plated or tin plated

CONTACT - Copper alloy, silver plated

LOOP SEALING - rubber

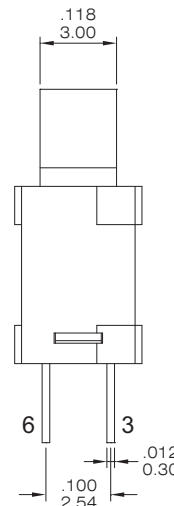
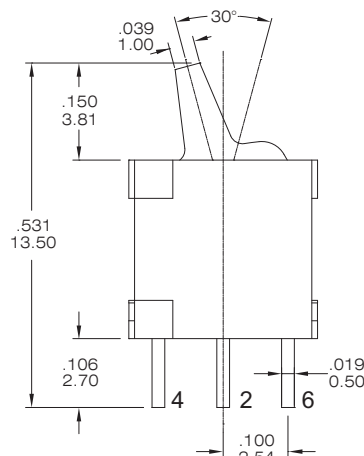
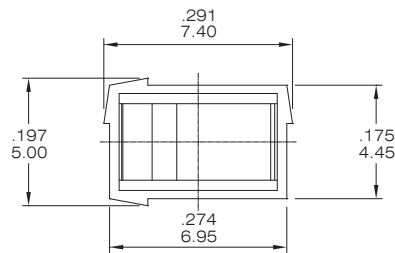
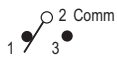
How do you modify the switches you need!!

U R - 4 - R 1 - C R - 9 - 2 -

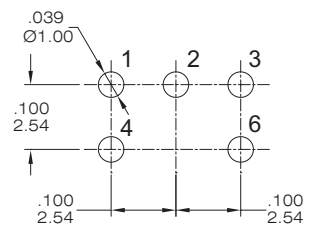
Switches Function		Actuator	Termination	Contact Material	Actuator color	Case code
UR-4	SP on-none-on	R1 Lever	C PC (straight type) H horizon V vertical	R gold plated (STD.) K gold / tin plated	9 gray	2 black
						RoHS code
						H = RoHS Compliant

Model No.	Switching position		
UR-4	ON	none	ON
Term. Comm.	2-3	open	2-1

SPDT



P.C.B LAYOUT



UR-4-R1CR-9-2